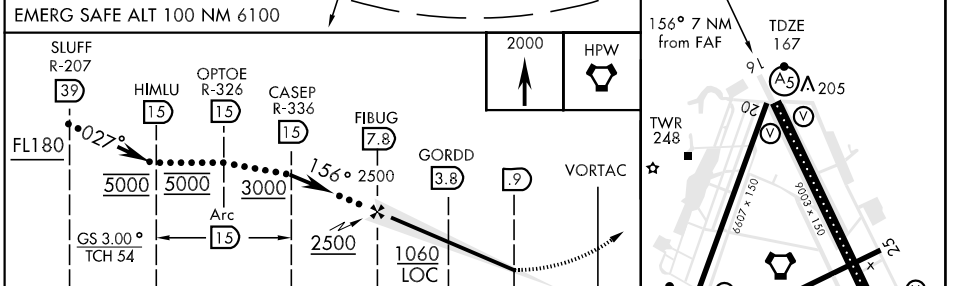
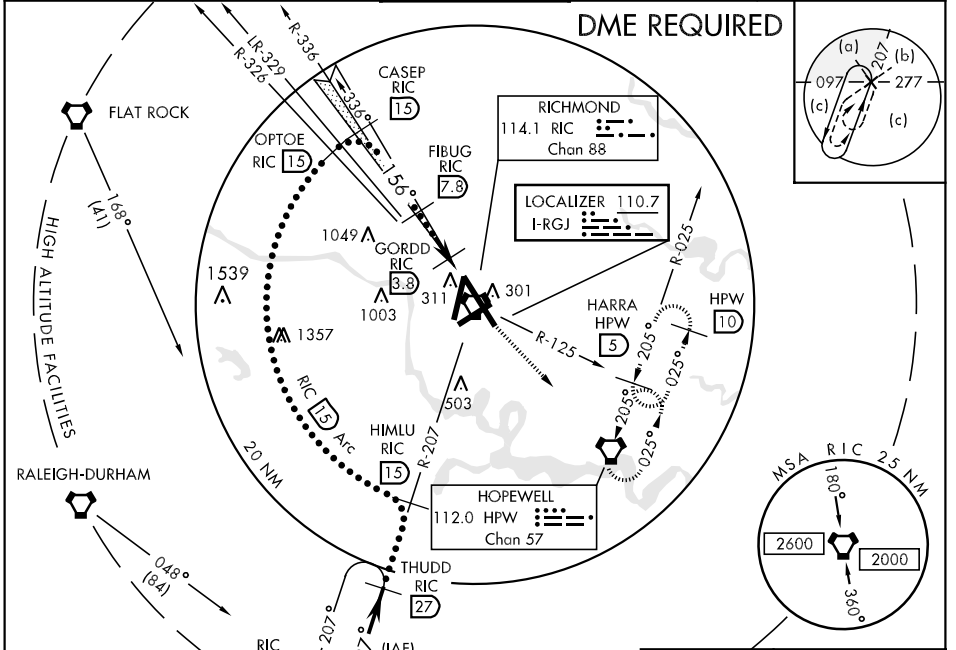


LOC I-RGJ 110.7	APCH CRS 156°	Rwy Idg TDZE Arpt Elev 9003 167 167	JAL-347 [USAF]	RICHMOND INTL (KRIC)
---------------------------	-------------------------	---	----------------	----------------------

MALS R MISSED APPROACH: Climb to 2000 direct HPW VORTAC and hold. (TACAN acct climbing left turn to 2000 via RIC R-125 to HARRA 5 DME and hold NE, LT, 205° inbound)

ATIS ★ 119.15 263.025	POTOMAC APP CON 134.7 307.2	RICHMOND TOWER 121.1 257.8	GND CON 121.9 348.6	CLNC DEL 127.55
---------------------------------	---------------------------------------	--------------------------------------	-------------------------------	---------------------------



CATEGORY	C	D	E
S-ILS 16	367/24	200	(200-½)
S-LOC 16	580/40 413	(500-¾)	580/50 413 (500-1)
CIRCLING	660-1½ 493 (500-1½)	720-2 553 (600-2)	740-2 573 (600-2)

NE-3, 11 MAR 2010 to 08 APR 2010

NE-3, 11 MAR 2010 to 08 APR 2010