

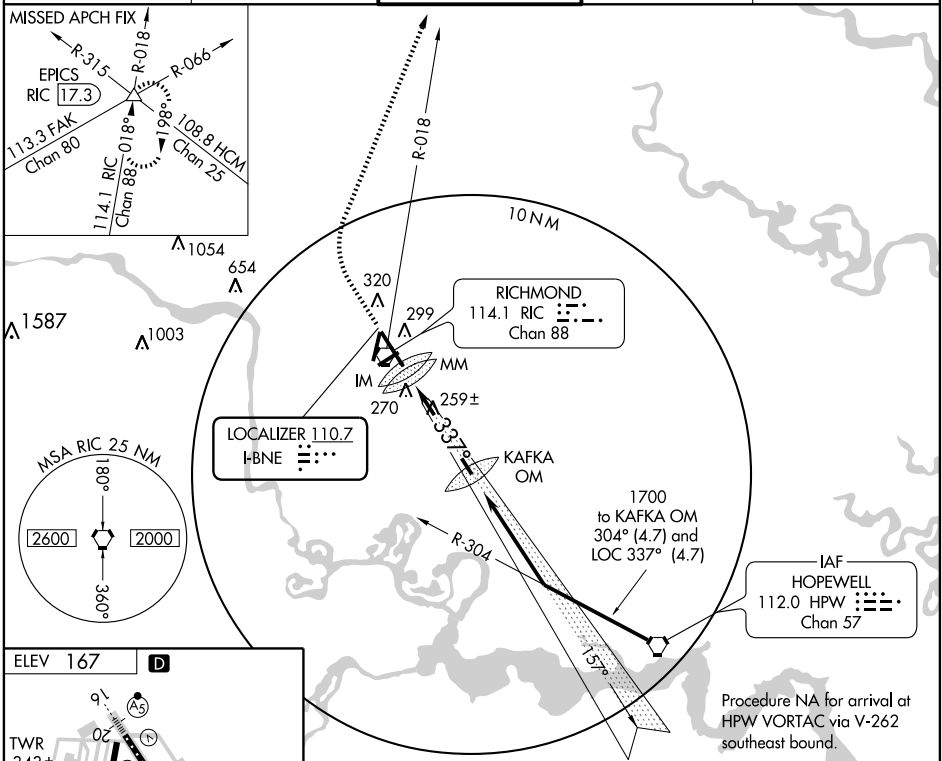
# ILS or LOC RWY 34

RICHMOND INTL (RIC)

LOC I-BNE <b>110.7</b>	APP CRS <b>337°</b>	Rwy Idg <b>9003</b>
		TDZE <b>161</b>
		Apt Elev <b>167</b>

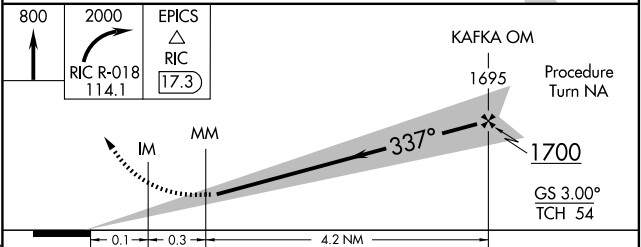
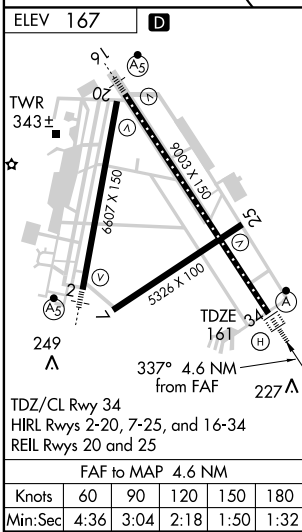
**ALSIF-2** MISSED APPROACH: Climb to 800 then climbing right turn to 2000 via RIC VORTAC R-018 to EPICS INT/RIC 17.3 DME and hold.

ATIS <b>119.15 263.025</b>	POTOMAC APP CON <b>134.7 307.2</b>	<b>RICHMOND TOWER</b> <b>121.1 257.8</b>	GND CON <b>121.9 348.6</b>	CLNC DEL <b>127.55 348.6</b>
-------------------------------	---------------------------------------	---	-------------------------------	---------------------------------



NE-3, 11 MAR 2010 to 08 APR 2010

NE-3, 11 MAR 2010 to 08 APR 2010



CATEGORY	A	B	C	D	E
S-ILS 34	361/18 200 (200-½)				361/24 200 (200-½)
S-LOC 34	520/24 359 (400-½)			520/40	359 (400-¾)
CIRCLING	660-1 493 (500-1)		660-1½ 493 (500-1½)	720-2 553 (600-2)	740-2 573 (600-2)