

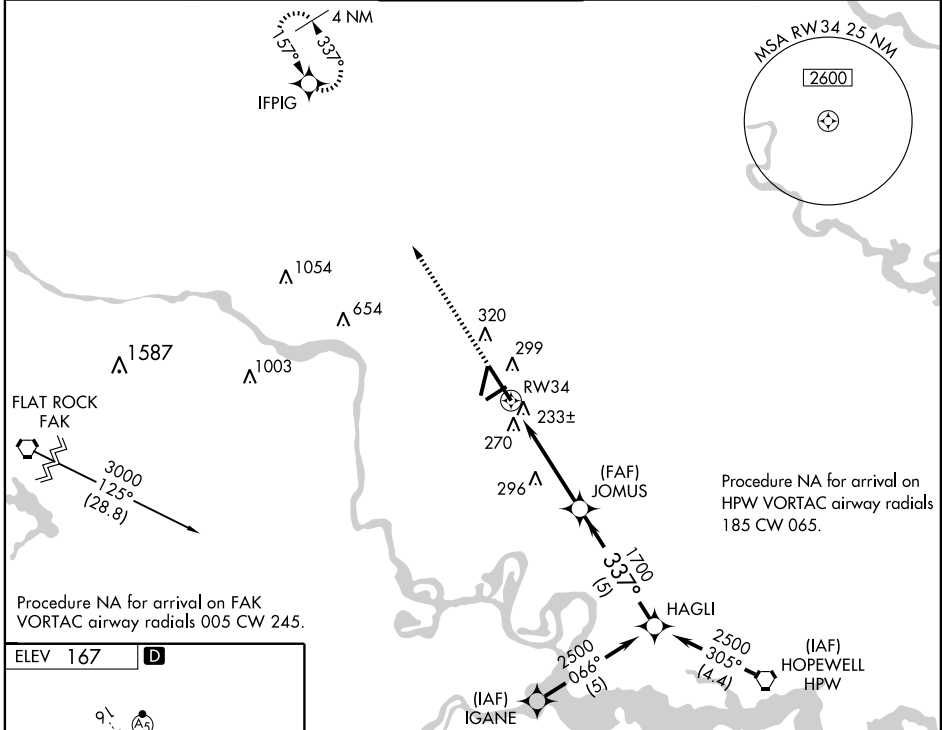
RNAV (GPS) RWY 34

RICHMOND INTL (RIC)

APP CRS 337°	Rwy Idg 9003
	TDZE 161
	Apt Elev 167

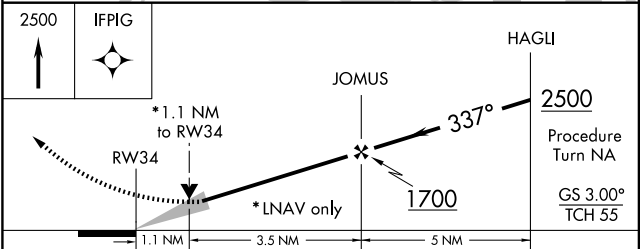
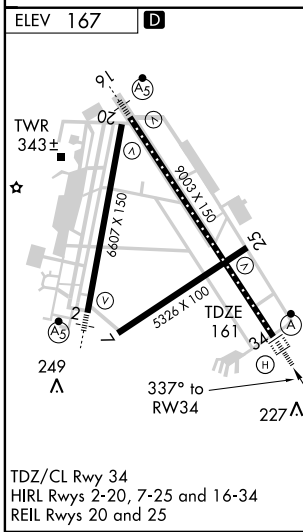
<p>▽ For uncompensated Baro-VNAV systems, LNAV/VNAV NA below -15°C (5°F) or above 48°C (118°F). For inoperative ALSF, increase LNAV Cat D visibility to RVR 6000. DME/DME RNP-0.3 NA.</p>	<p>ALSF-2</p>	<p>MISSED APPROACH: Climb to 2500 direct IFPIG WP and hold.</p>
--	----------------------	--

ATIS 119.15 263.025	POTOMAC APP CON 134.7 307.2	RICHMOND TOWER 121.1 257.8	GND CON 121.9 348.6	CLNC DEL 127.55 348.6
-------------------------------	---------------------------------------	--------------------------------------	-------------------------------	---------------------------------



NE-3, 11 MAR 2010 to 08 APR 2010

NE-3, 11 MAR 2010 to 08 APR 2010



CATEGORY	A	B	C	D
GLS DA	NA			
LNAV/VNAV DA	570/50		409 (500-1)	
LNAV MDA	560/24		399 (400-½)	
CIRCLING	660-1	493 (500-1)	660-1½	720-2
			493 (500-1½)	553 (600-2)