

# RNAV (GPS) RWY 17

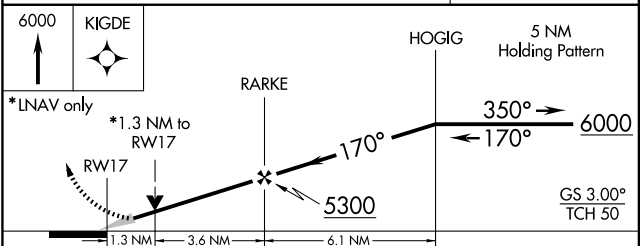
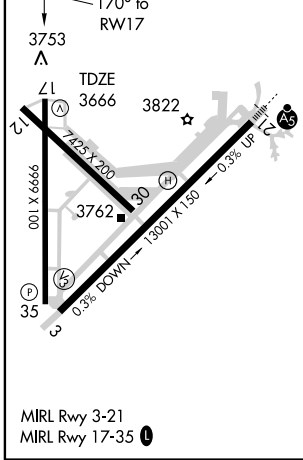
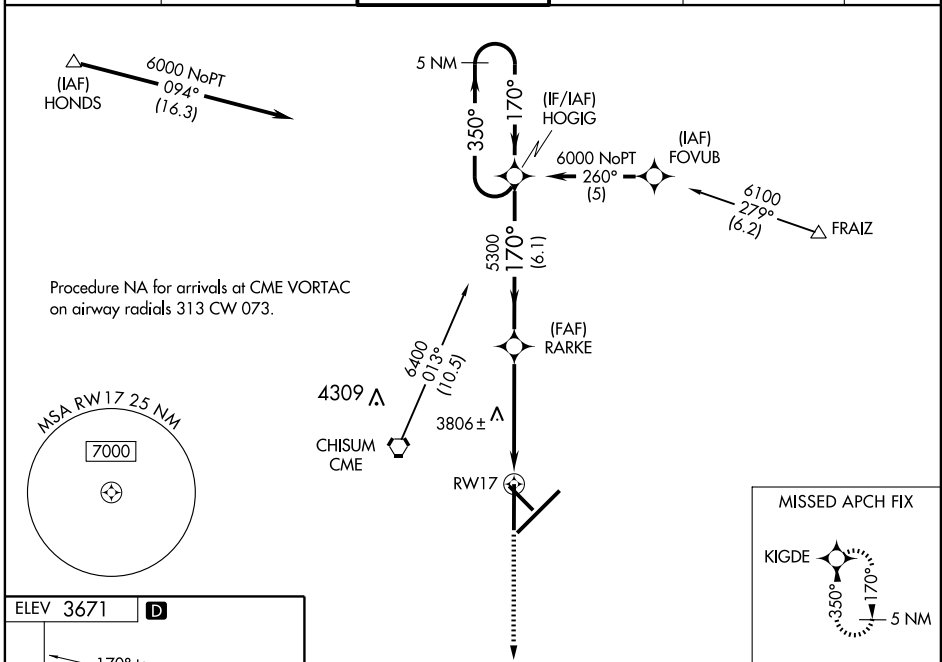
ROSWELL INTL AIR CENTER (ROW)

WAAS CH <b>65702</b> <b>W17A</b>	APP CRS <b>170°</b>	Rwy Idg TDZE Apt Elev	<b>9999</b> <b>3666</b> <b>3671</b>
--	------------------------	-----------------------------	---

**⚠** DME/DME RNP-0.3 NA.  
**⚠** For uncompensated Baro-VNAV systems, LNAV/VNAV NA below -22°C (-7°F) or above 41°C (106°F).  
**ASR** If local altimeter setting not received, use Artesia altimeter setting and increase all DAs/MDAs 100 feet.  
 VDP and Baro-VNAV NA when using Artesia altimeter setting.

MISSED APPROACH: Climb to 6000 direct KIGDE and hold.

ATIS <b>128.45 306.2</b>	ROSWELL APP CON* <b>119.6 239.0</b>	ROSWELL TOWER* <b>118.5 (CTAF) 233.7</b>	GND CON <b>121.9 348.6</b>	CLNC DEL <b>132.875 282.25</b>	UNICOM <b>122.95</b>
-----------------------------	--	---	-------------------------------	-----------------------------------	-------------------------



CATEGORY	A	B	C	D
LPV DA	3916- <sup>3</sup> / <sub>4</sub> 250 (300- <sup>3</sup> / <sub>4</sub> )			
LNAV/VNAV DA	4003-1 <sup>1</sup> / <sub>4</sub> 337 (400-1 <sup>1</sup> / <sub>4</sub> )			
LNAV MDA	4120-1	454 (500-1)	4120-1 <sup>1</sup> / <sub>4</sub> 454 (500-1 <sup>1</sup> / <sub>4</sub> )	4120-1 <sup>1</sup> / <sub>2</sub> 454 (500-1 <sup>1</sup> / <sub>2</sub> )
CIRCLING	4140-1 <sup>1</sup> / <sub>4</sub>	469 (500-1 <sup>1</sup> / <sub>4</sub> )	4140-1 <sup>1</sup> / <sub>2</sub> 469 (500-1 <sup>1</sup> / <sub>2</sub> )	4240-2 569 (600-2)

SW-1, 11 MAR 2010 to 08 APR 2010

SW-1, 11 MAR 2010 to 08 APR 2010