

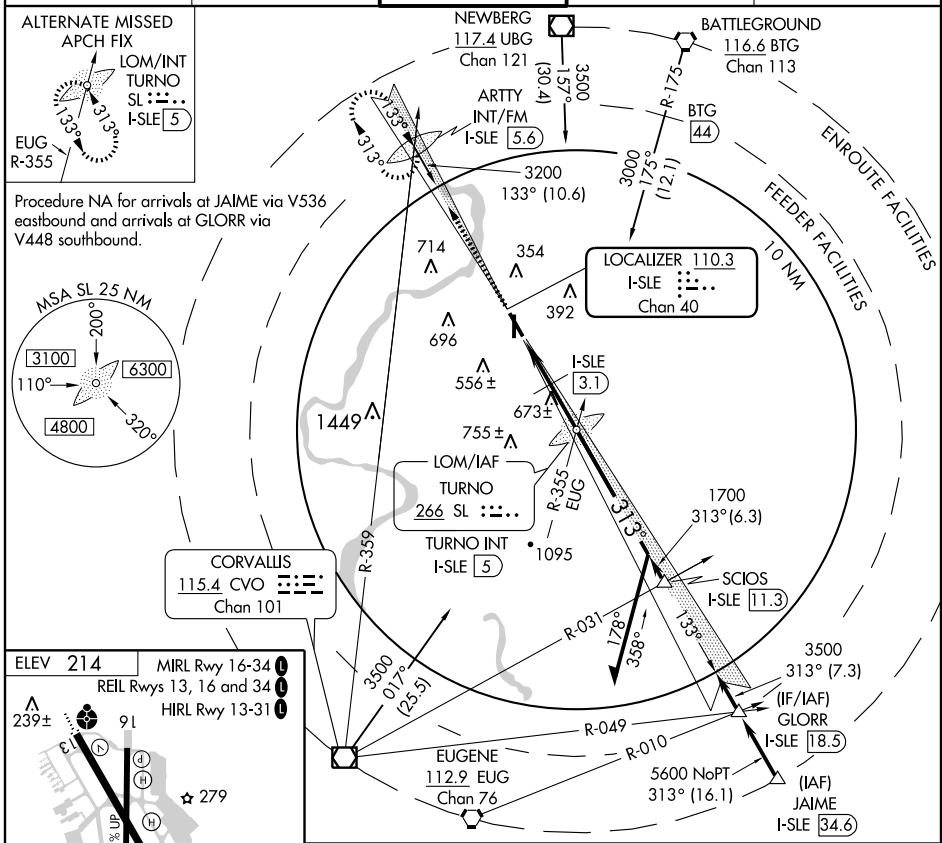
# LOC/DME RWY 31

SALEM/ McNARY FIELD (SL/E)

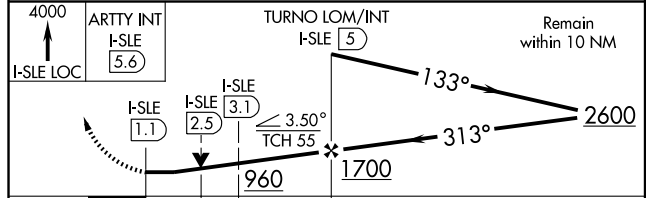
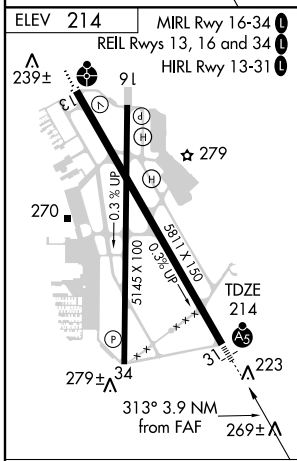
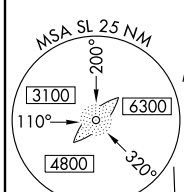
LOC/DME I-SLE <b>110.3</b> Chan 40	APP CRS <b>313°</b>	Rwy Idg TDZE Apt Elev	<b>5811</b> <b>214</b> <b>214</b>
--	------------------------	-----------------------------	---

<b>▽</b> <b>▲</b>	MALSR 	MISSED APPROACH: Climb to 4000 via I-SLE LOC northwest course to ARTY FM/Int/I-SLE 5.6 DME and hold, continue climb-in-hold to 4000.
----------------------	-----------	--

ATIS <b>124.55</b>	SEATTLE CENTER <b>125.8 291.7</b>	<b>SALEM TOWER*</b> <b>119.1</b> (CTAF) <b>257.2</b>	GND CON <b>121.9</b>	UNICOM <b>122.95</b>
-----------------------	--------------------------------------	---	-------------------------	-------------------------



Procedure NA for arrivals at JAIME via V536 eastbound and arrivals at GLORR via V448 southbound.



Knots	60	90	120	150	180
Min:Sec					
CATEGORY	A	B	C	D	
S-31	780/24	566 (600-½)	780/50 566 (600-1)	780/60 566 (600-1½)	
CIRCLING	900-1 686 (700-1)	940-1 726 (800-1)	940-2 726 (800-2)	1000-2½ 786 (800-2½)	

NW-1, 19 NOV 2009 to 17 DEC 2009

NW-1, 19 NOV 2009 to 17 DEC 2009