


# RNAV (GPS) RWY 31

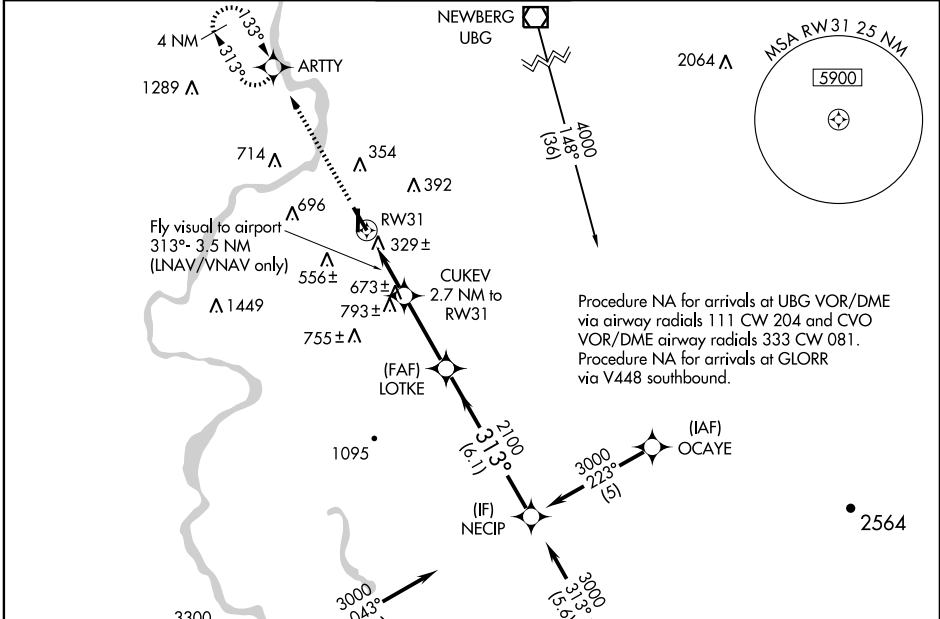
SALEM/ MCNARY FIELD (SL.E)

WAAS CH <b>86202</b> <b>W31A</b>	APP CRS <b>313°</b>	Rwy Idg TDZE Apt Elev	<b>5811</b> <b>214</b> <b>214</b>
--	------------------------	-----------------------------	---

**⚠** Inoperative table does not apply to LNAV/VNAV. For uncompensated Baro-VNAV systems, LNAV/VNAV NA below -1.5°C (5°F) or above 48°C (118°F). DME/DME RNP-0.3 NA. When local altimeter setting not received, use McMinnville altimeter setting and increase all DA 49 feet; increase all MDA 60 feet and LNAV and circling visibility Cats B/C/D ¼ mile. Baro-VNAV and VDP NA when using McMinnville altimeter setting.

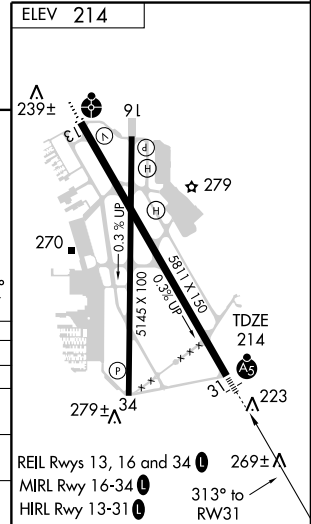
**MALSR**  
 MISSED APPROACH: Climb to 3700 direct ARTY and hold, continue climb-in-hold to 3700.

ATIS <b>124.55</b>	SEATTLE CENTER <b>125.8 291.7</b>	SALEM TOWER* <b>119.1 (CTAF) 0 257.2</b>	GND CON <b>121.9</b>	UNICOM <b>122.95</b>
-----------------------	--------------------------------------	---	-------------------------	-------------------------



NW-1, 19 NOV 2009 to 17 DEC 2009

NW-1, 19 NOV 2009 to 17 DEC 2009



3700	ARTY	*LNAV only	Procedure Turn NA	NECIP
Fly visual to airport 313°-3.5 NM (LNAV/VNAV only)	RW31	*2.2 NM to RW31	2100	3000
	2.2 NM	0.5	3 NM	6.1 NM
CATEGORY	A	B	C	D
LPV DA	414/24 200 (200-½)			
LNAV/VNAV DA	1334-2	1120 (1200-2)	1334-3	1120 (1200-3)
LNAV MDA	940/24	726 (800-½)	940-1½ 726 (800-1½)	940-1¼ 726 (800-1¼)
CIRCLING	940-1	726 (800-1)	940-2 726 (800-2)	1000-2 ½ 786 (800-2½)