

ILS or LOC RWY 31

SALEM/McNARY FIELD (SLE)

LOC/DME I-SLE 110.3 Chan 40	APP CRS 313°	Rwy Idg 5811 TDZE 214 Apt Elev 214
--	------------------------	---

⚠ *RVR 1800 authorized with the use of FD or AP or HUD to DA.
When local altimeter setting not received, use Mc Minnville altimeter setting and increase DA 49 feet, and all MDA 60 feet; increase circling Cat D visibility to 2 3/4 miles.
VDP NA when using Mc Minnville altimeter setting.

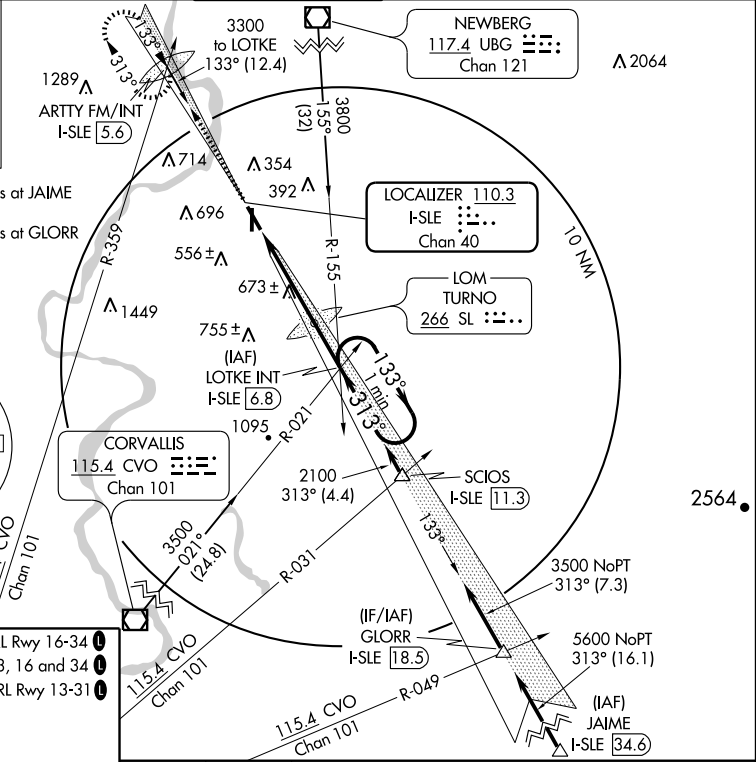
MALSR
AS

MISSED APPROACH: Climb to 4000 via I-SLE NW course to ARTTY FM/INT/I-SLE 5.6 DME and hold, continue climb-in-hold to 4000.

ATIS 124.55	SEATTLE CENTER 125.8 291.7	SALEM TOWER * 119.1 (CTAF) 0 257.2	GND CON 121.9	UNICOM 122.95
-----------------------	--------------------------------------	--	-------------------------	-------------------------

ALTERNATE MISSED APCH FIX

TURN0
SL : : : :
266

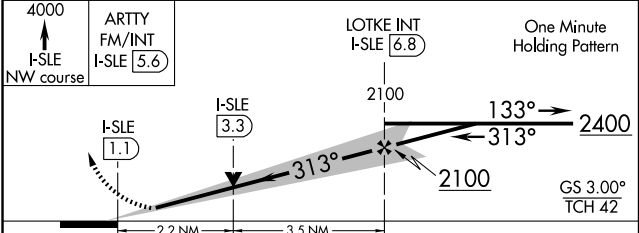


Procedure NA for arrivals at JAIME via V536 eastbound.
Procedure NA for arrivals at GLORR via V448 southbound.

NW-1, 19 NOV 2009 to 17 DEC 2009

NW-1, 19 NOV 2009 to 17 DEC 2009

ELEV 214	MIRL Rwy 16-34
REIL Rwys 13, 16 and 34	HIRL Rwy 13-31



FAF to MAP 5.7 NM					
Knots	60	90	120	150	180
Min:Sec	5:42	3:48	2:51	2:17	1:54

CATEGORY	A	B	C	D
S-ILS 31	*414/24 200 (200-1/2)			
S-LOC 31	960/24 746 (800-1/2)	960/40 746 (800-3/4)	960-1 3/4 746 (800-1 1/4)	960-2 746 (800-2)
CIRCLING	960-1 746 (800-1)	960-1 1/4 746 (800-1 1/4)	960-2 1/4 746 (800-2 1/4)	1000-2 1/2 786 (800-2 1/2)