

LOC BC RWY 13

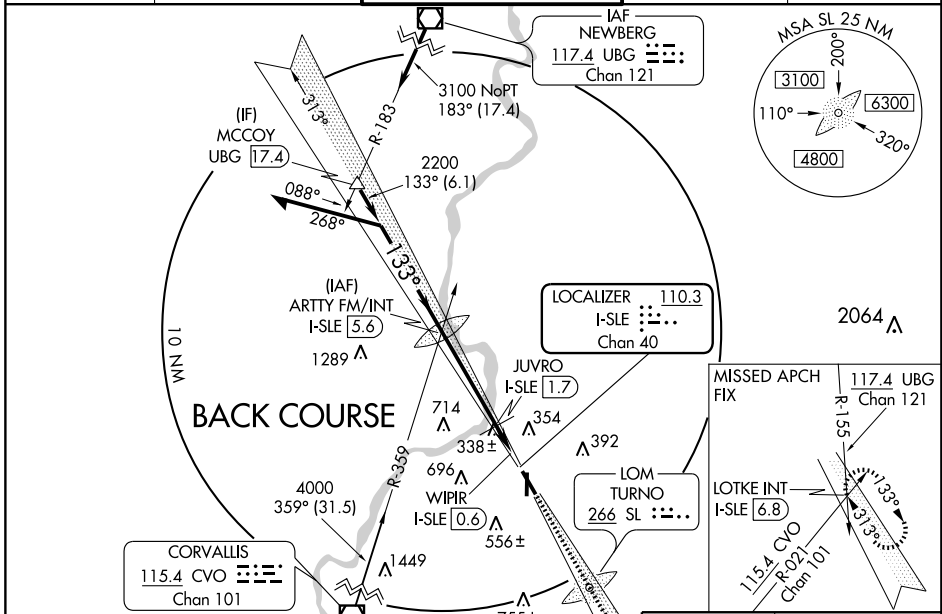
SALEM / MCNARY FIELD (SLE)

LOC/DME I-SLE 110.3 Chan 40	APP CRS 133°	Rwy Idg 5811 TDZE 204 Apt Elev 214
------------------------------------------	------------------------	---------------------------------------------------------------

NA Inoperative table does not apply to S-13 Cat C or when using McMinnville altimeter setting to S-13 Cat C and JUVRO fix minimums Cat C. ARTY INT not authorized for final approach fix. When local altimeter setting not received, use McMinnville altimeter setting and increase all MDA 60 feet and Cat C and D visibility 1/4 mile, for JUVRO fix minimums, increase S-13 Cat C visibility 1/2 mile, Cat D visibility 1/4 mile.

ODALS
MISSED APPROACH: Climb to 2400 via I-SLE SE course to LOTKE INT/I-SLE 6.8 DME and hold, continue climb-in-hold to 2400.

ATIS 124.55	SEATTLE CENTER 125.8 291.7	SALEM TOWER ★ 119.1 (CTAF) 0 257.2	GND CON 121.9	UNICOM 122.95
-----------------------	--------------------------------------	----------------------------------------------	-------------------------	-------------------------

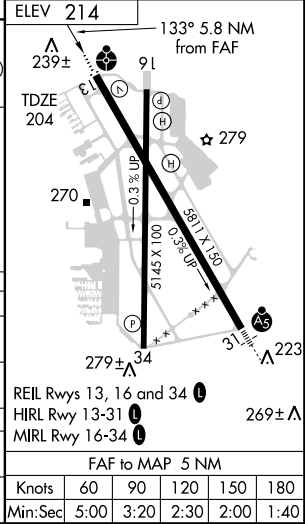
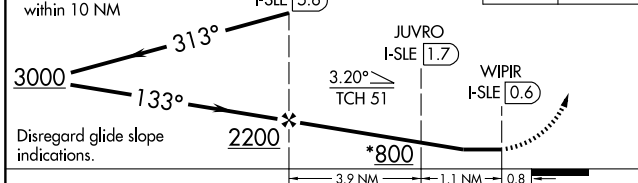


NW-1, 11 MAR 2010 to 08 APR 2010

NW-1, 11 MAR 2010 to 08 APR 2010

*860 when using Mc Minnville altimeter setting. VGSI and descent angles not coincident.

Remain within 10 NM



CATEGORY	A	B	C	D
S-13	800-3/4	596 (600-3/4)	800-1 1/2	800-1 3/4
CIRCLING	900-1	940-1	940-2	1000-2 1/2
JUVRO FIX MINIMUMS				
S-13	600-3/4	396 (400-3/4)	600-1 1/4	396 (400-1 1/4)
CIRCLING	900-1	940-1	940-2	1000-2 1/2

Knots	60	90	120	150	180
Min:Sec	5:00	3:20	2:30	2:00	1:40