

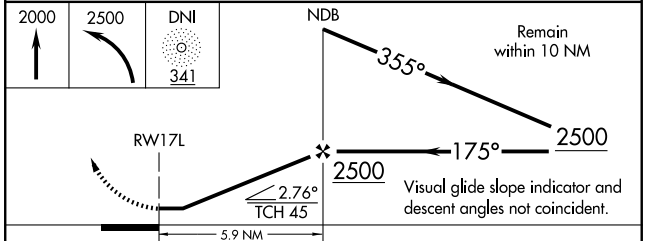
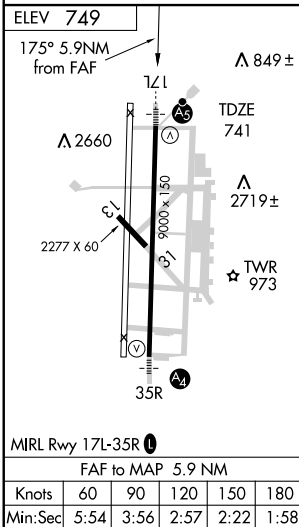
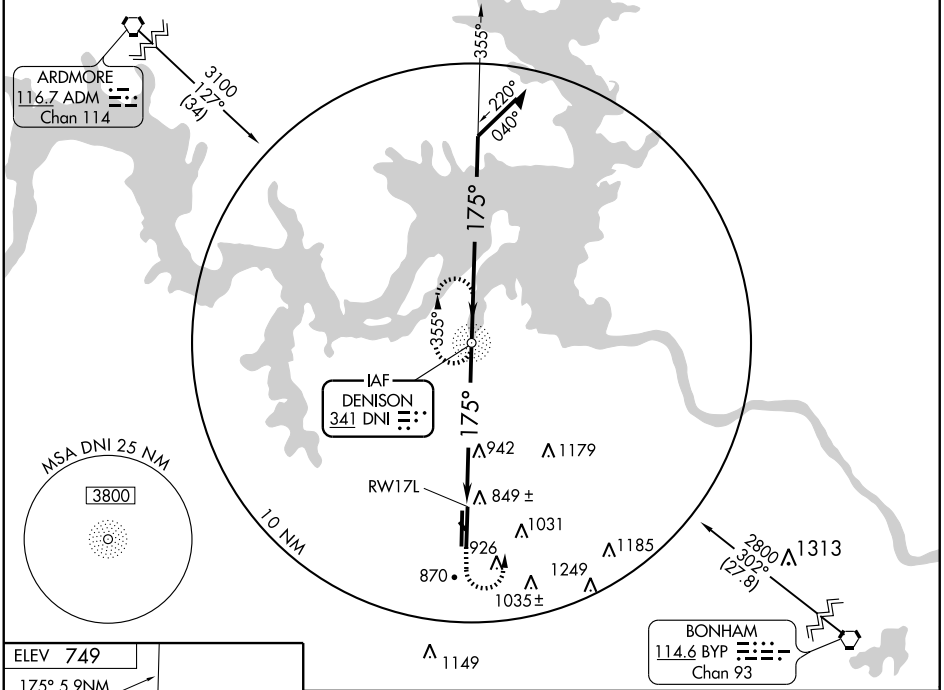
NDB or GPS RWY 17L

SHERMAN/DENISON/NORTH TEXAS RGNL (GYI)

NDB DNI	APP CRS	Rwy Idg	9000
341	175°	TDZE	741
		Apt Elev	749

NA	When local altimeter setting not received, use Dallas-Love Field altimeter setting.	MALSR AS	MISSED APPROACH: Climb to 2000, then climbing left turn to 2500 direct DNI NDB and hold.
-----------	---	--------------------	---

AWOS-3 118.775	FORT WORTH CENTER 124.75 377.1	NORTH TEXAS RGNL ★ 120.575 (CTAF) 233.7	GND CON 124.125	UNICOM 122.7
---------------------------------	---	--	----------------------------------	-------------------------------



CATEGORY	A		B		C		D	
	S-17L	1300- ³ / ₄	559 (600- ³ / ₄)	1300-1	559 (600-1)	1300-1 ¹ / ₂	559 (600-1 ¹ / ₂)	1300-1 ¹ / ₂
CIRCLING	1300-1	551 (600-1)	1300-1 ¹ / ₂	551 (600-1 ¹ / ₂)	1400-2	651 (700-2)	1400-2	651 (700-2)
DALLAS-LOVE FIELD ALTIMETER SETTING MINIMUMS								
S-17L	1460- ³ / ₄	719 (800- ³ / ₄)	1460-1 ¹ / ₂	719 (800-1 ¹ / ₂)	1460-2	719 (800-2)	1460-2	719 (800-2)
CIRCLING	1460-1	711 (800-1)	1460-2	711 (800-2)	1540-2 ¹ / ₂	791 (800-2 ¹ / ₂)	1540-2 ¹ / ₂	791 (800-2 ¹ / ₂)

NDB or GPS RWY 17L

SC-2, 19 NOV 2009 to 17 DEC 2009

SC-2, 19 NOV 2009 to 17 DEC 2009