

VOR/DME-A

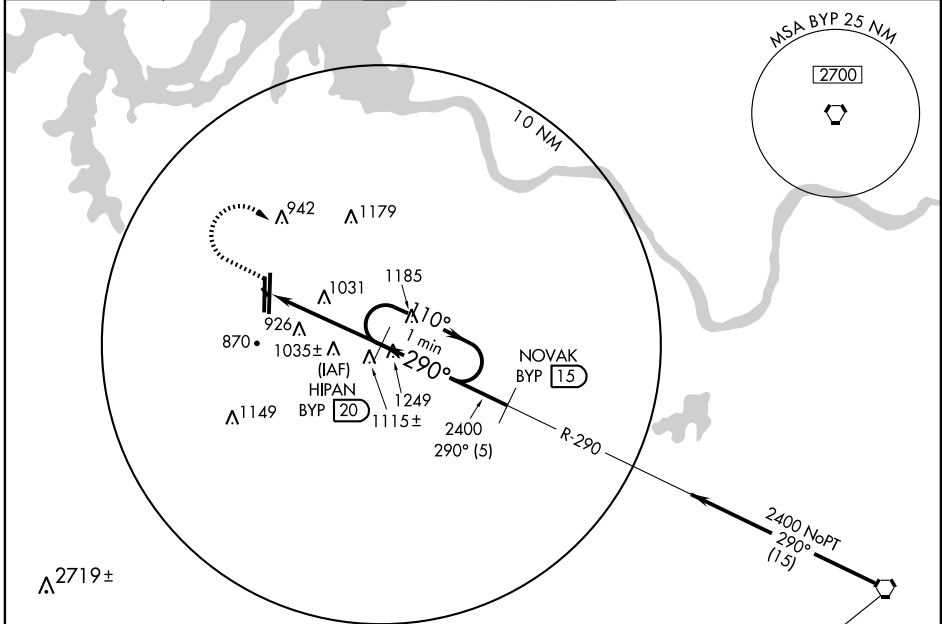
SHERMAN/DENISON/NORTH TEXAS RGNL(GYI)

VORTAC BYP 114.6 Chan 93	APP CRS 290°	Rwy Idg TDZE Apt Elev	N/A N/A 749
--	------------------------	-----------------------------	--

▲ NA When local altimeter setting not received, use Dallas-Love Field altimeter setting.

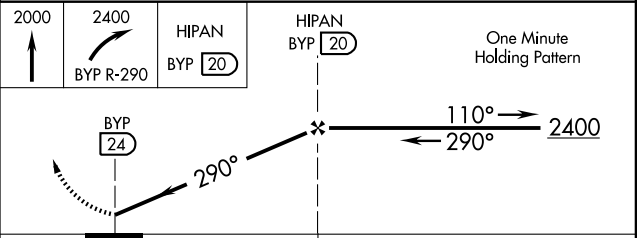
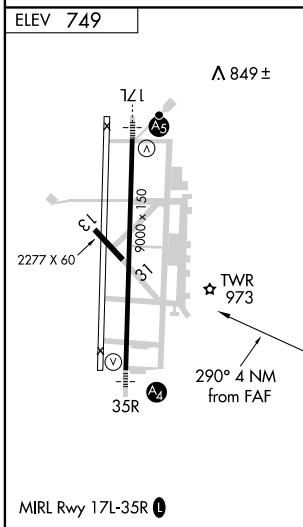
MISSED APPROACH: Climb to 2000, then climbing right turn to 2400 via BYP R-290 to HIPAN/BYP 20 DME and hold.

AWOS-3 118.775	FORT WORTH CENTER 124.75 377.1	NORTH TEXAS RGNL ★ 120.575 (CTAF) 233.7	GND CON 124.125	UNICOM 122.7
--------------------------	--	---	---------------------------	------------------------



SC-2, 19 NOV 2009 to 17 DEC 2009

SC-2, 19 NOV 2009 to 17 DEC 2009



CATEGORY	A	B	C	D
CIRCLING	1380-1 631 (700-1)	1380-1¼ 631 (700-1¼)	1380-1¾ 631 (700-1¾)	1400-2 651 (700-2)
DALLAS-LOVE FIELD ALTIMETER SETTING MINIMUMS				
CIRCLING	1540-1 791 (800-1)	1540-1¼ 791 (800-1¼)	1540-2¼ 791 (800-2¼)	1540-2½ 791 (800-2½)

VOR/DME-A