

SHERMAN/DENISON, TEXAS


AL-389 (FAA)

VOR/DME RNAV RWY 35R

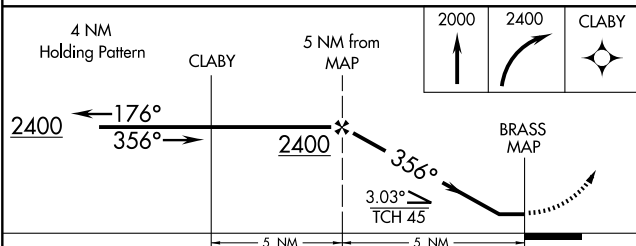
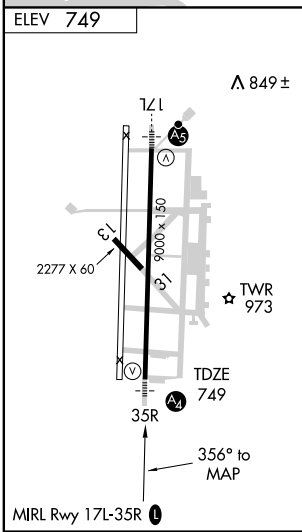
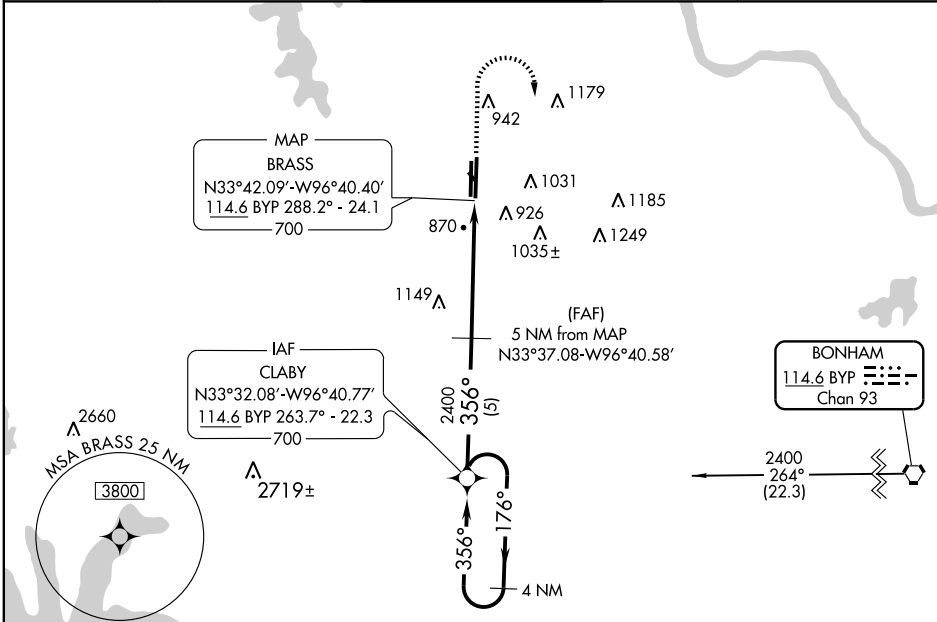
SHERMAN/DENISON/NORTH TEXAS RGNL (GYI)

VORTAC BYP 114.6 Chan 93	APP CRS 356°	Rwy Idg 9000 TDZE 749 Apt Elev 749
--	------------------------	---

NA * Inoperative table does not apply to S-35R Cat C.
 ** Inoperative table does not apply to S-35R Cat B/C.
 When local altimeter setting not received, use Dallas-Love Field altimeter setting. Visibility reduction by helicopters NA.

MALS

MISSED APPROACH: Climb to 2000, then climbing right turn to 2400 direct CLABY and hold.

AWOS-3 118.775	FORT WORTH CENTER 124.75 377.1	NORTH TEXAS RGNL* 120.575 (CTAF) 233.7	GND CON 124.125	UNICOM 122.7
--------------------------	--	--	---------------------------	------------------------



CATEGORY	A		B		C		D	
	S-35R *	1460-3/4	711 (800-3/4)	1460-2	711 (800-2)	1460-2 1/4	711 (800-2 1/4)	1460-2 1/4
CIRCLING	1460-1	711 (800-1)	1460-2	711 (800-2)	1460-2 1/4	711 (800-2 1/4)	1460-2 1/4	711 (800-2 1/4)
DALLAS-LOVE FIELD ALTIMETER SETTING MINIMUMS								
S-35R **	1620-3/4	871 (900-3/4)	1620-1 1/4	871 (900-1 1/4)	1620-2 1/2	871 (900-2 1/2)	1620-2 3/4	871 (900-2 3/4)
CIRCLING	1620-1	871 (900-1)	1620-1 1/4	871 (900-1 1/4)	1620-2 1/2	871 (900-2 1/2)	1620-2 3/4	871 (900-2 3/4)

SHERMAN/DENISON, TEXAS
 Orig-D 09127

33°43'N-96°40'W

VOR/DME RNAV RWY 35R

SC-2, 19 NOV 2009 to 17 DEC 2009

SC-2, 19 NOV 2009 to 17 DEC 2009