

ILS or LOC RWY 17L

SHERMAN/DENISON/ NORTH TEXAS RGNL/PERRIN FIELD (GYI)

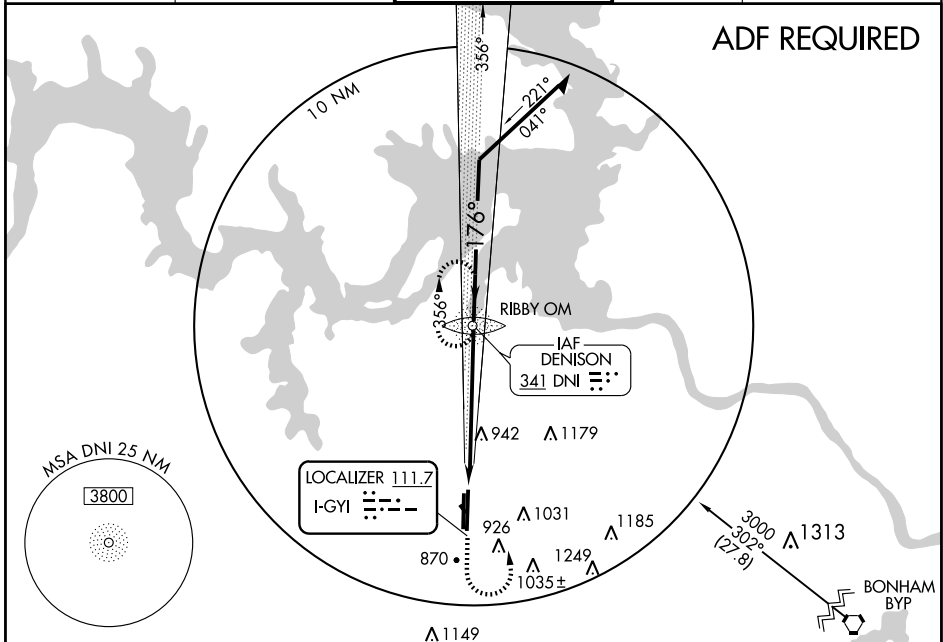
LOC I-GYI 111.7	APP CRS 176°	Rwy Idg 9000
		TDZE 741
		Apt Elev 749

▲ NA When local altimeter setting not received, use Dallas-Love Field altimeter setting. For inoperative MALS increase S-ILS 17L visibility to 1 1/4.



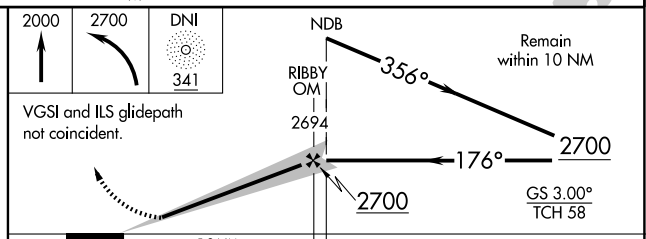
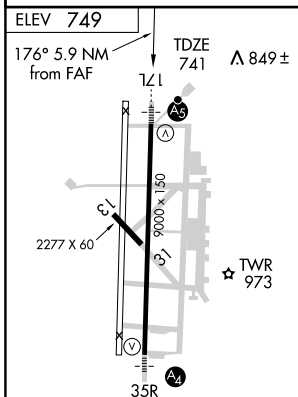
MISSED APPROACH: Climb to 2000, then climbing left turn to 2700 direct DNI NDB and hold.

AWOS-3 118.775	FORT WORTH CENTER 124.75 377.1	NORTH TEXAS ★ 120.575 (CTAF) 233.7	GND CON 124.125	UNICOM 122.7
--------------------------	--	--	---------------------------	------------------------



SC-2, 11 MAR 2010 to 08 APR 2010

SC-2, 11 MAR 2010 to 08 APR 2010



CATEGORY	A	B	C	D
S-ILS 17L	941-1/2 200 (200-1/2)			
S-LOC 17L	1240-1/2	499 (500-1/2)	1240-3/4 499 (500-3/4)	1240-1 499 (500-1)
CIRCLING	1280-1	531 (600-1)	1280-1 1/2 531 (600-1 1/2)	1400-2 651 (700-2)
DALLAS-LOVE FIELD ALTIMETER SETTING MINIMUMS				
S-ILS 17L	1099-3/4 358 (400-3/4)			
S-LOC 17L	1400-1/2	659 (700-1/2)	1400-1 1/4 659 (700-1 1/4)	1400-1 1/2 659 (700-1 1/2)
CIRCLING	1440-1 1/4	691 (700-1 1/4)	1440-2 691 (700-2)	1540-2 1/2 791 (800-2 1/2)

MIRA Rwy 17L-35R					
FAF to MAP 5.9 NM					
Knots	60	90	120	150	180
Min:Sec	5:54	3:56	2:57	2:22	1:58

ILS or LOC RWY 17L