

# RNAV (GPS) RWY 15

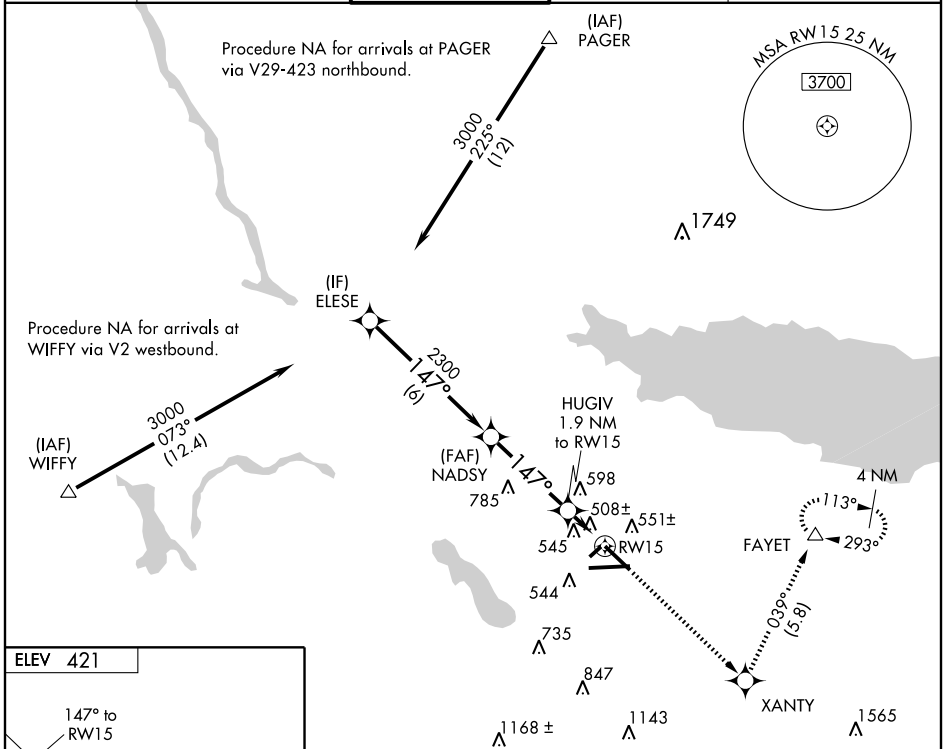
SYRACUSE HANCOCK INTL (SYR)

WAAS CH <b>50117</b> <b>W15A</b>	APP CRS <b>147°</b>	Rwy Idg TDZE Apt Elev	<b>7500</b> <b>417</b> <b>421</b>
--	------------------------	-----------------------------	---

Baro-VNAV NA below -15°C (5°F). DME/DME RNP-0.3 NA. Inoperative table does not apply to LPV, LNAV/VNAV and LNAV Cat C.

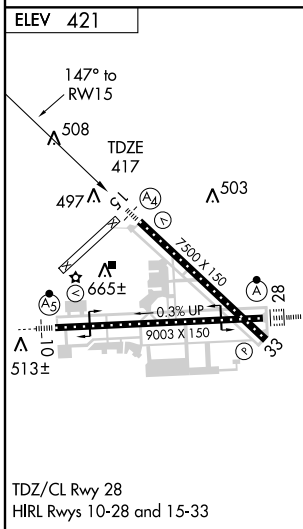
**MALS** MISSED APPROACH: Climb to 3000 direct XANTY and left turn via 039° track to FAYET and hold.

ATIS <b>124.225</b>	SYRACUSE APP CON <b>134.275 279.6</b>	SYRACUSE TOWER <b>120.3 239.0</b>	GND CON <b>121.7 348.6</b>	CLNC DEL <b>125.05 257.775</b>
------------------------	--	--------------------------------------	-------------------------------	-----------------------------------



NE-2, 11 MAR 2010 to 08 APR 2010

NE-2, 11 MAR 2010 to 08 APR 2010



ELESE	3000	XANTY	FAYET
	↑		
Procedure Turn NA	3000	147°	NADSy
	2300	1060	HUGIV 1.9 NM to RW15
GS 3.00°	6 NM	3.8 NM	1.9 NM
TCH 53	RW15		
TRK 039°			
CATEGORY	A	B	C
LPV DA	735-1 318 (400-1)		
LNAV/VNAV DA	825-1½ 408 (500-1½)		
LNAV MDA	900-¾ 483 (500-¾)	900-1¼ 483 (500-1¼)	900-1½ 483 (500-1½)
CIRCLING	900-1½ 479 (500-1½)		980-2 559 (600-2)