

RNAV (GPS) Z RWY 23

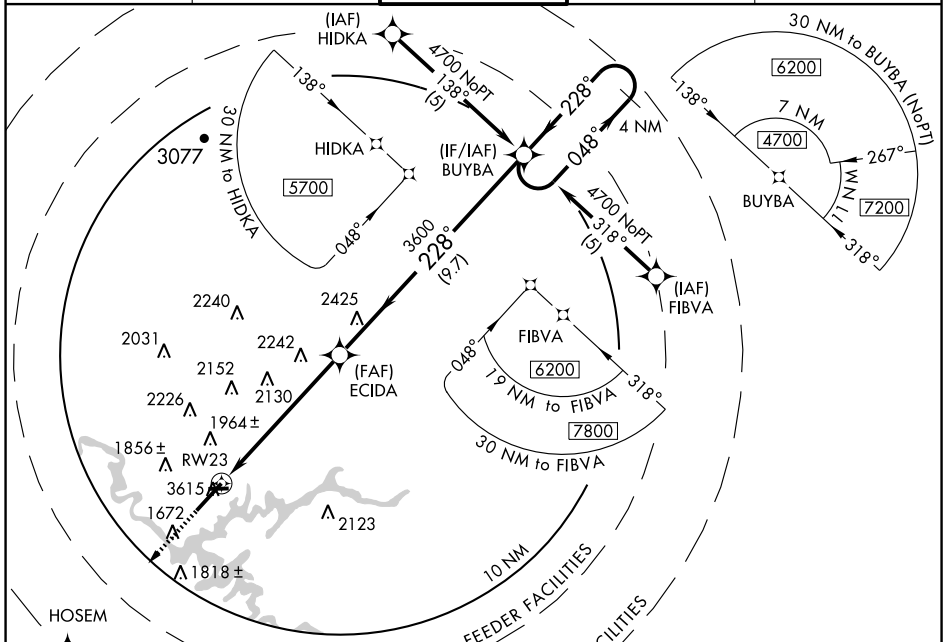
BRISTOL / TRI-CITIES RGNL TN/VA (TRI)

APP CRS	Rwy Idg	8000
228°	TDZE	1518
	Apt Elev	1519

⚠ Circling NA NW of Rwy 9 and 23. Circling to Rwy 09 NA at night.
⚠ GPS or RNP-0.3 Required. DME/DME RNP-0.3 NA.
⚠ Baro-VNAV NA below -18° C (0°F).
 When VGSI inoperative, circling Rwy 27 NA at night.

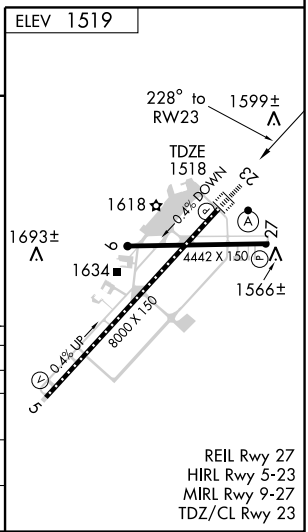
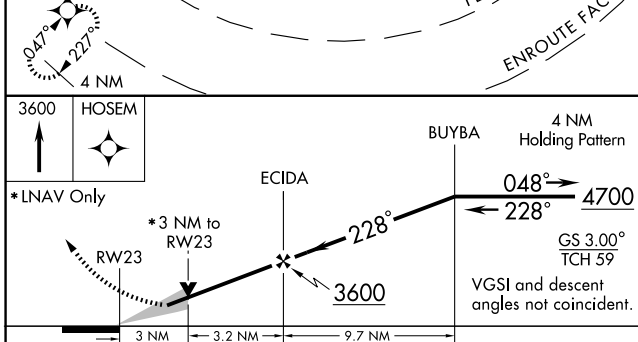
ALSF-2 **⚠** MISSED APPROACH: Climb to 3600 direct HOSEM WP and hold.

ATIS 118.25	TRI-CITY APP CON* 134.425 317.5	TRI-CITY TOWER* 119.5 (CTAF) 257.8	GND CON 121.7 348.6	UNICOM 122.95
-----------------------	---	--	-------------------------------	-------------------------



SE-1, 11 MAR 2010 to 08 APR 2010

SE-1, 11 MAR 2010 to 08 APR 2010



CATEGORY	A	B	C	D
GLS PA DA	NA			
LNAV/VNAV DA	2360-2½		842 (900-2½)	
LNAV MDA	2560/40 1042 (1100-¾)	2560/50 1042 (1100-1)	2560-2½	1042 (1100-2½)
CIRCLING	2560-3		1041 (1100-3)	