

# RNAV (GPS) RWY 21

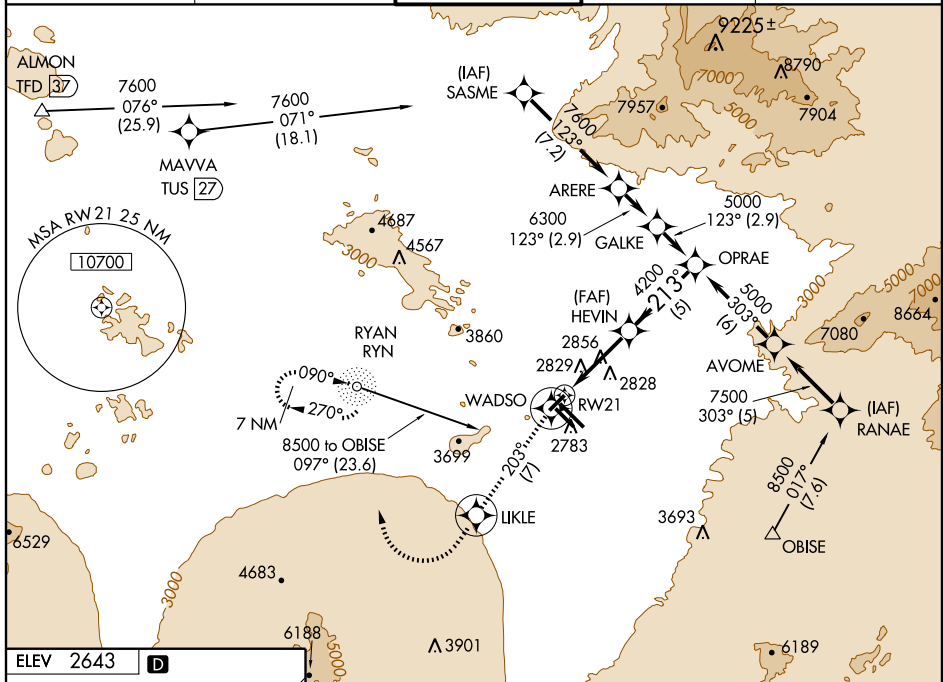
TUCSON INTL (TUS)

APP CRS <b>213°</b>	Rwy Idg <b>6000</b>
	TDZE <b>2573</b>
	Apt Elev <b>2643</b>

▼ For uncompensated Baro-VNAV systems, LNAV/VNAV NA below -20°C (-4°F) or above 43°C (111°F).  
 ▲ NA DME/DME RNP-0.3 NA.

MISSED APPROACH: Climb to 6000 via 213° course to WADSO WP, then via 203° course to LIKLE WP, then climbing right turn direct RYN NDB and hold.

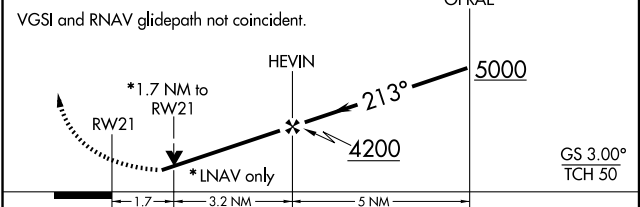
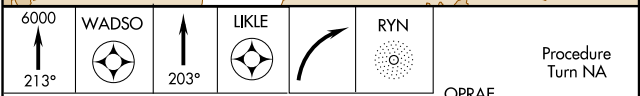
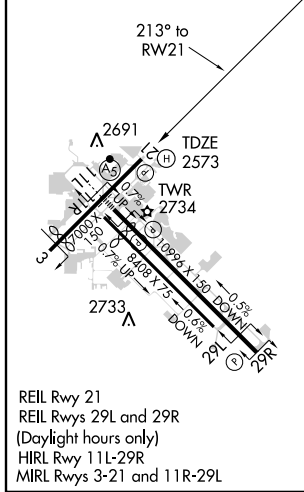
ATIS <b>123.8 279.65</b>	TUCSON APP CON <b>119.4 318.1</b>	TUCSON TOWER <b>118.3 257.8</b>	GND CON <b>124.4 348.6</b>	CLNC DEL <b>126.65 326.2</b>
-----------------------------	--------------------------------------	------------------------------------	-------------------------------	---------------------------------



SW-4, 19 NOV 2009 to 17 DEC 2009

SW-4, 19 NOV 2009 to 17 DEC 2009

ELEV 2643	<b>D</b>
-----------	----------



CATEGORY	A	B	C	D
GLS PA DA	NA			
LNAV/VNAV DA	3141-2 568 (600-2)			
LNAV MDA	3160-1	587 (600-1)	3160-1½ 587 (600-1½)	3160-1¾ 587 (600-1¾)
CIRCLING	3160-1 517 (600-1)	3220-1 577 (600-1)	3220-1½ 577 (600-1½)	3220-2 577 (600-2)