

TUCSON, ARIZONA

AL-430 (FAA)

RNAV (GPS) RWY 29L

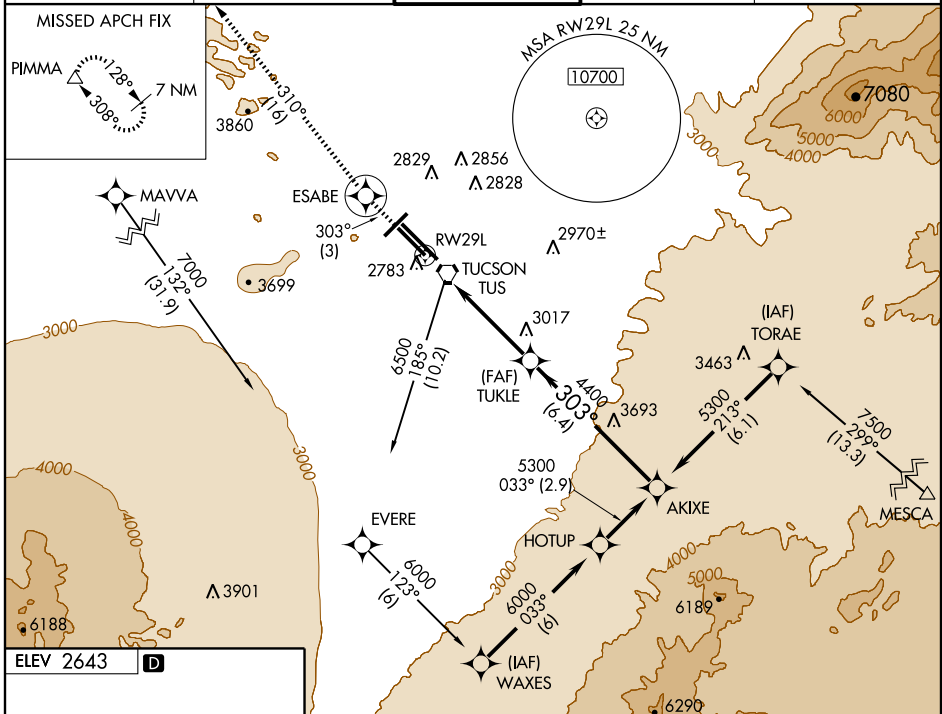
TUCSON INTL (TUS)

APP CRS 303°	Rwy Idg 8408
	TDZE 2629
	Apt Elev 2643

⚠ For uncompensated Baro-VNAV systems, LNAV/VNAV NA below -20°C (-4°F) or above 43°C (111°F).
⚠ DME/DME RNP-0.3 NA.

MISSED APPROACH: Climb to 6500 via 303° course to ESABE and via 310° track to PIMMA and hold.

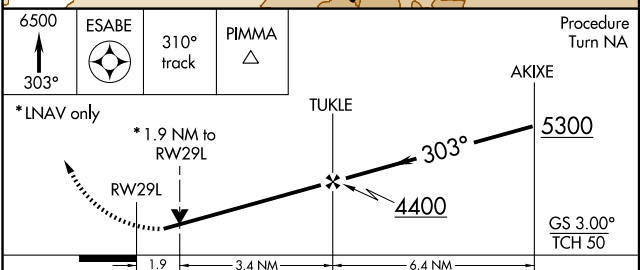
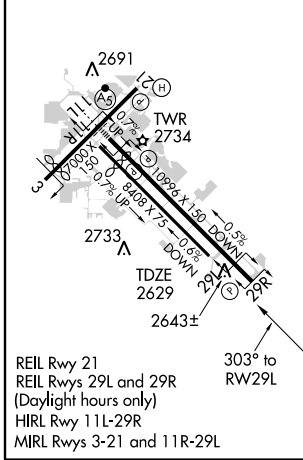
ATIS 123.8 279.65	TUCSON APP CON 119.4 318.1	TUCSON TOWER 118.3 257.8	GND CON 124.4 348.6	CLNC DEL 126.65 326.2
-----------------------------	--------------------------------------	------------------------------------	-------------------------------	---------------------------------



SW-4, 19 NOV 2009 to 17 DEC 2009

SW-4, 19 NOV 2009 to 17 DEC 2009

ELEV 2643	D
-----------	----------



CATEGORY	A	B	C	D
GLS PA DA	NA			
LNAV/VNAV DA	3040-1½ 411 (400-1½)			
LNAV MDA	3320-1 691 (700-1)	3320-2 691 (700-2)	3320-2 691 (700-2¼)	3320-2¼ 691 (700-2¼)
CIRCLING	3320-1 677 (700-1)	3320-2 677 (700-2)	3320-2¼ 677 (700-2¼)	3320-2¼ 677 (700-2¼)

TUCSON, ARIZONA
 Orig-B 09183

32°07'N - 110°56'W

RNAV (GPS) RWY 29L

TUCSON INTL (TUS)