

TUCSON, ARIZONA

AL-430 (FAA)

# RNAV (RNP) Y RWY 11L TUCSON INTL (TUS)

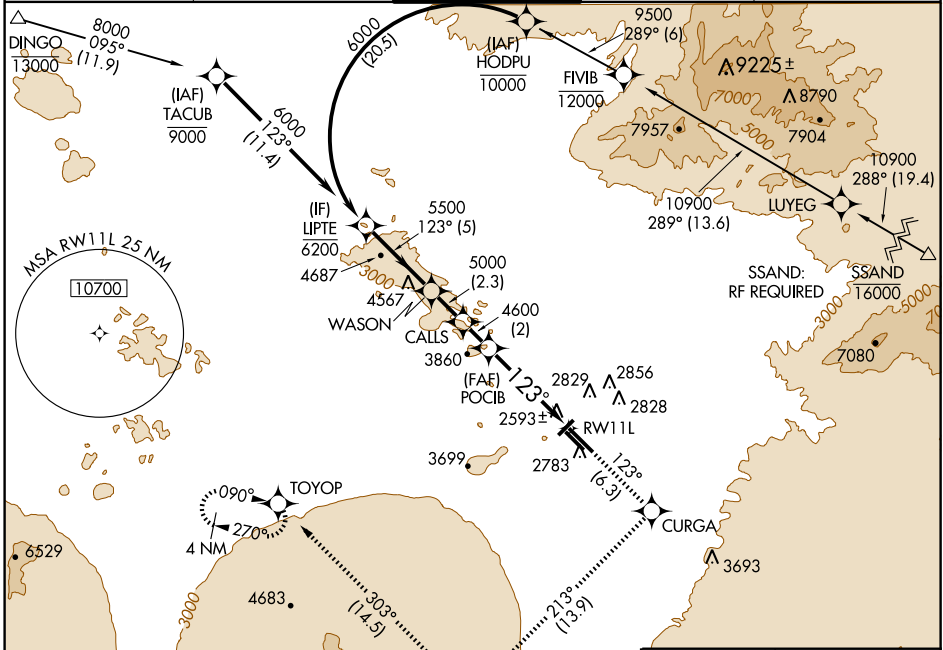
APP CRS <b>123°</b>	Rwy Idg <b>10996</b>
	TDZE <b>2599</b>
	Apt Elev <b>2643</b>

**▽** For uncompensated Baro-VNAV systems, procedure NA below -5°C (23°F) or above 43°C (111°F).  
**▲ NA** For inoperative MALS, increase RNP 0.30 visibility to RVR 6000 all Cats. GPS required.



**MISSED APPROACH:** Climb to 6000 via 123° track to CURGA, 213° track to REBDE, 303° track to TOYOP and hold.

ATIS <b>123.8 279.65</b>	TUCSON APP CON <b>119.4 318.1</b>	TUCSON TOWER <b>118.3 257.8</b>	GND CON <b>124.4 348.6</b>	CLNC DEL <b>126.65 326.2</b>
-----------------------------	--------------------------------------	------------------------------------	-------------------------------	---------------------------------



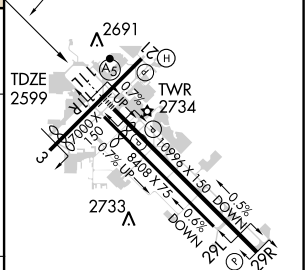
SW-4, 19 NOV 2009 to 17 DEC 2009

SW-4, 19 NOV 2009 to 17 DEC 2009



ELEV 2643	<b>D</b>
-----------	----------

LIPE	WASON	CALLS	POCIB	RWY 11L
6000	5500	5000	4600	
Procedure Turn NA				
GP 3.00°				
TCH 55				
5 NM	2.3 NM	2 NM	6.1 NM	



CATEGORY	A	B	C	D
RNP 0.30 DA	2947/40 348 (400-3/4)			

## SPECIAL AIRCRAFT & AIRCREW AUTHORIZATION REQUIRED

REIL Rwy 21  
 REIL Rws 29L and 29R  
 (Daylight hours only)  
 HIRL Rwy 11L-29R  
 MIRL Rws 3-21 and 11R-29L

TUCSON, ARIZONA  
Orig 09183

32°07'N - 110°56'W

# RNAV (RNP) Y RWY 11L

TUCSON INTL (TUS)