

# RNAV (RNP) Y RWY 29R

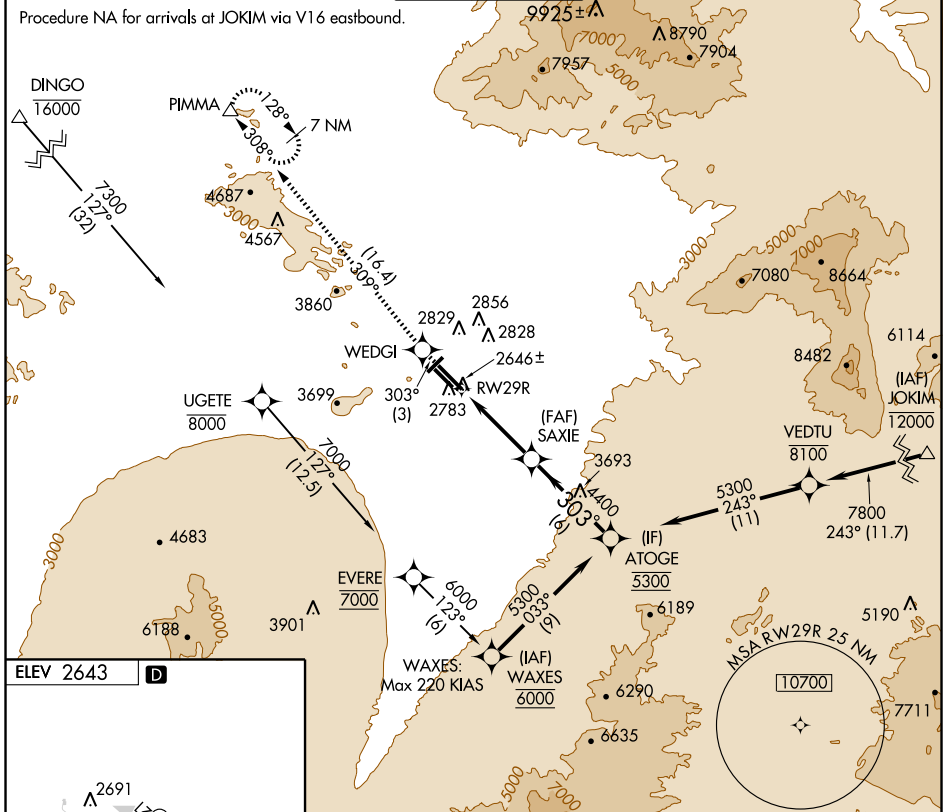
TUCSON INTL (TUS)

APP CRS <b>303°</b>	Rwy Idg <b>10996</b>
	TDZE <b>2643</b>
	Apt Elev <b>2643</b>

**▼** When VGSI inoperative, procedure NA at night. GPS required.  
**▲ NA** For uncompensated Baro-VNAV systems, procedure NA below -5°C (23°F) or above 43°C (110°F).

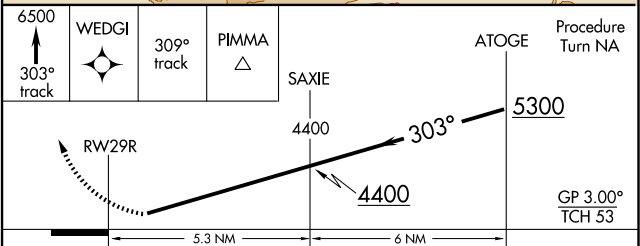
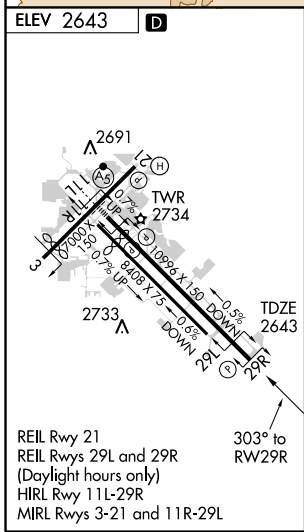
MISSED APPROACH: Climb to 6500 via 303° track to WEDGI, 309° track to PIMMA and hold.

ATIS <b>123.8 279.65</b>	TUCSON APP CON <b>119.4 318.1</b>	TUCSON TOWER <b>118.3 257.8</b>	GND CON <b>124.4 348.6</b>	CLNC DEL <b>126.65 326.2</b>
-----------------------------	--------------------------------------	------------------------------------	-------------------------------	---------------------------------



SW-4, 11 MAR 2010 to 08 APR 2010

SW-4, 11 MAR 2010 to 08 APR 2010



CATEGORY	A	B	C	D
RNP 0.30 DA	2989-1¼ 346 (400-1¼)			

**SPECIAL AIRCRAFT & AIRCREW  
AUTHORIZATION REQUIRED**