

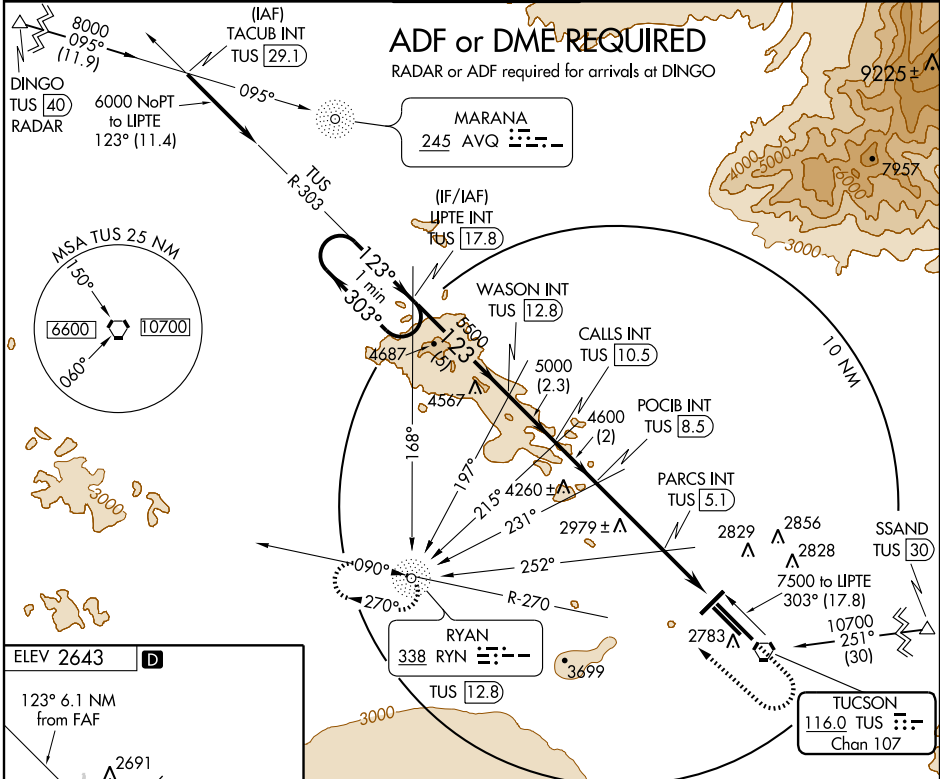
VOR or TACAN RWY 11L

TUCSON INTL (TUS)

VORTAC TUS 116.0 Chan 107	APP CRS 123°	Rwy Idg TDZE 2599 Apt Elev 2643	10996
--	------------------------	---	--------------

<p>▽ For inoperative MALS, increase S-11L Cats. D and E visibility to RVR 6000.</p> <p>▲ ADF or DME required.</p>	<p>MALS</p>	<p>MISSED APPROACH: Climb to 4000 then climbing right turn to 6000 (Cat. E 8000) via heading 300° and TUS R-270 to RYN NDB/TUS 12.8 DME and hold.</p>
---	-------------	---

<p>ATIS 123.8 279.65</p>	<p>TUCSON APP CON 119.4 318.1</p>	<p>TUCSON TOWER 118.3 257.8</p>	<p>GND CON 124.4 348.6</p>	<p>CLNC DEL 126.65 326.2</p>
-------------------------------------	--	--	---------------------------------------	---



SW-4, 11 MAR 2010 to 08 APR 2010

SW-4, 11 MAR 2010 to 08 APR 2010

ELEV 2643 **D**

123° 6.1 NM from FAF

TDZE 2599 TWR 2734

REIL Rwy 21
REIL Rwys 29L and 29R (Daylight hours only)
HIRL Rwy 11L-29R
MIRL Rwys 3-21 and 11R-29L

FAF to MAP 6.1 NM

Knots	60	90	120	150	180
Min:Sec	6:06	4:04	3:03	2:26	2:02

	LIPTTE INT TUS 17.8	WASON INT TUS 12.8	CALLS INT TUS 10.5	POCIB INT TUS 8.5	PARCS INT TUS 5.1	TUS 2.4	RYN 338
One Minute Holding Pattern							
	6000	5500	5000	4600	3480		
	← 303°	← 123°	← 123°	← 303°	← 303°	← 303°	
	5 NM	2.3 NM	2 NM	3.4 NM	1.7 NM	1 NM	
CATEGORY	A	B	C	D	E		
S-11L	2960/24	361 (400-½)		2960/50	361 (400-1)		
CIRCLING	3100-1 457 (500-1)	3220-1 577 (600-1)	3220-1½ 577 (600-1½)	3220-2 577 (600-2)	3740-3 1097 (1100-3)		