

RNAV (GPS) RWY 3

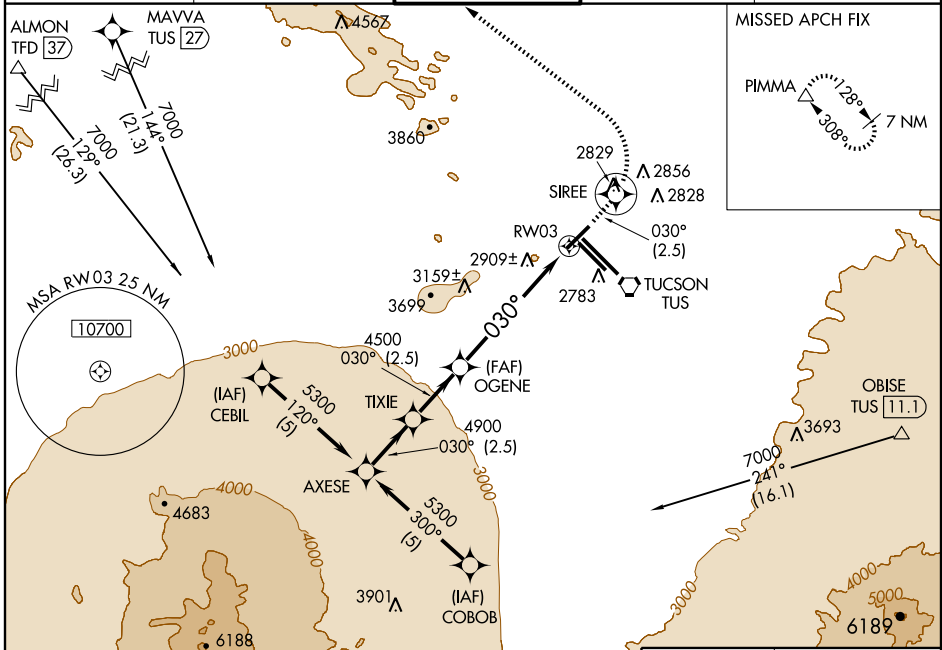
TUCSON INTL (TUS)

APP CRS 030°	Rwy Idg 6159
	TDZE 2572
	Apt Elev 2643

⚠ For uncompensated Baro-VNAV systems, LNAV/VNAV NA below -20°C (-4°F) or above 43°C (111°F).
⚠ DME/DME RNP-0.3 NA.

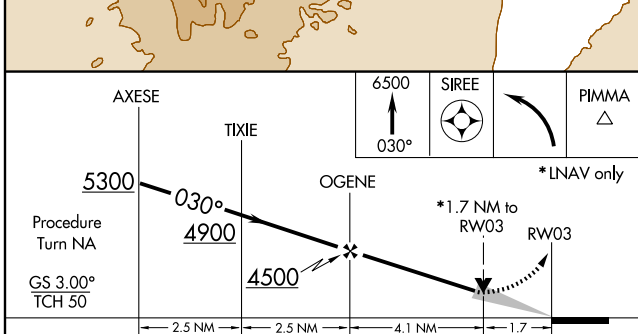
MISSED APPROACH: Climb to 6500 via 030° course to SIREE, and climbing left turn direct PIMMA and hold.

ATIS 123.8 279.65	TUCSON APP CON 119.4 318.1	TUCSON TOWER 118.3 257.8	GND CON 124.4 348.6	CLNC DEL 126.65 326.2
-----------------------------	--------------------------------------	------------------------------------	-------------------------------	---------------------------------



SW-4, 11 MAR 2010 to 08 APR 2010

SW-4, 11 MAR 2010 to 08 APR 2010



CATEGORY	A				B		C		D	
GLS PA DA	NA									
LNAV/VNAV	3176-2¼ 604 (600-2¼)									
LNAV MDA	3160-1 588 (600-1)		3160-1½ 588 (600-1½)		3160-2 588 (600-2)					
CIRCLING	3160-1 517 (600-1)		3220-1 577 (600-1)		3220-1½ 577 (600-1½)		3220-2 577 (600-2)			

ELEV 2643 **D**

REIL Rwy 21
 REIL Rwy 29L and 29R
 (Daylight hours only)
 HIRL Rwy 11L-29R
 MIRL Rwy 3-21 and 11R-29L