

TUCSON SEVEN DEPARTURE

SL-430 (FAA)

TUCSON INTL (TUS)
TUCSON, ARIZONA

TAKE-OFF OBSTACLE NOTES

- RWY 3: Multiple trees and a sign beginning 1385' from DER, 322' left of centerline to 333' right of centerline, up to 45' AGL/2626' MSL.
- RWY 11L: Multiple bushes and vents beginning 115' from DER, 606' left of centerline to 383' right of centerline, up to 24' AGL/2674' MSL.
- RWY 11R: Tree 584' from DER, 176' right of centerline, 25' AGL/2645' MSL.
- RWY 21: Multiple bushes, poles, lights, railroad cars, and trees beginning 104' from DER, 594' left of centerline to 330' right of centerline, up to 48' AGL/2616' MSL.

- ATIS 123.8 279.65
- CLNC DEL 126.65 326.2
- GND CON 124.4 348.6
- TUCSON TOWER 118.3 257.8
- TUCSON DEP CON 125.1 269.55

BUCKEYE
110.6 BXX
Chan 43
N33°27.21'-W112°49.48'

PHOENIX
115.6 PXR
Chan 103
N33°25.98'-W111°58.21'
L-5, H-4

STANFIELD
114.8 TFD
Chan 95
N32°53.15'
W111°54.52'

GILA BEND
116.6 GBN
Chan 113
N32°57.38'-W112°40.46'
L-5, H-4

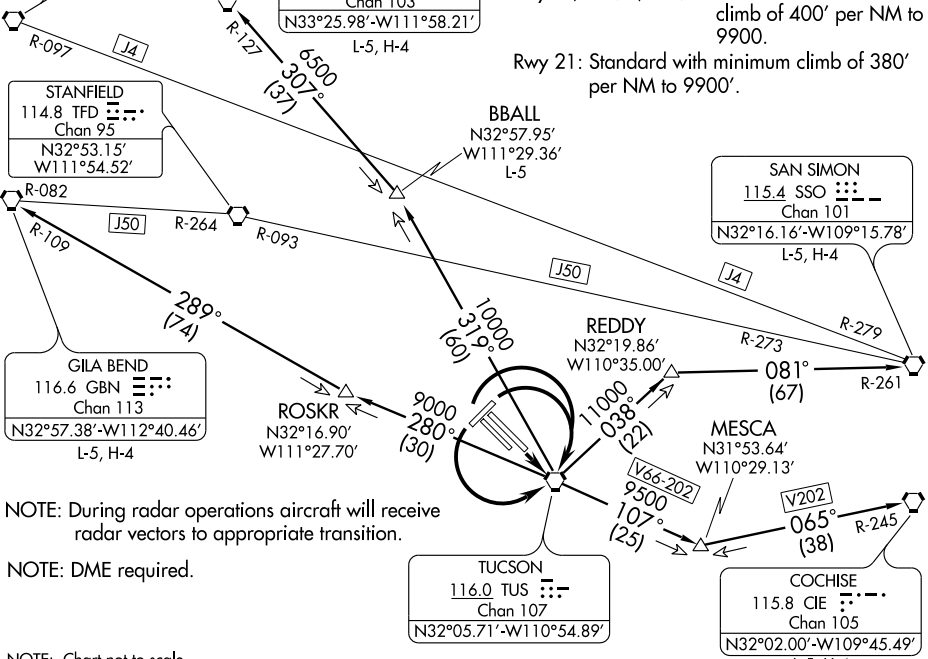
ROSKR
N32°16.90'
W111°27.70'

TUCSON
116.0 TUS
Chan 107
N32°05.71'-W110°54.89'

SAN SIMON
115.4 SSO
Chan 101
N32°16.16'-W109°15.78'
L-5, H-4

MESCA
N31°53.64'
W110°29.13'

COCHISE
115.8 CIE
Chan 105
N32°02.00'-W109°45.49'
L-5, H-4



TAKE-OFF MINIMUMS

- Rwys 3, 11L/R, 29L/R: Standard with minimum climb of 400' per NM to 9900.
- Rwy 21: Standard with minimum climb of 380' per NM to 9900'.

SW-4, 11 MAR 2010 to 08 APR 2010

SW-4, 11 MAR 2010 to 08 APR 2010

NOTE: During radar operations aircraft will receive radar vectors to appropriate transition.

NOTE: DME required.

NOTE: Chart not to scale.

DEPARTURE ROUTE DESCRIPTION

- TAKE-OFF RUNWAYS 11L/R:** Climb direct TUS VORTAC. Thence. . .
- TAKE-OFF RUNWAYS 3, 29L/R:** Climbing right turn direct TUS VORTAC. Thence. . .
- TAKE-OFF RUNWAY 21:** Climbing left turn direct TUS VORTAC. Thence. . .
- . . . via assigned transition. Maintain 17000, expect clearance to filed altitude 10 minutes after departure.
- BBALL TRANSITION (TUS7.BBALL):** From over TUS VORTAC via TUS R-319 to BBALL INT.
- COCHISE TRANSITION (TUS7.CIE):** From over TUS VORTAC via TUS R-107 and CIE R-245 to CIE VORTAC.
- GILA BEND TRANSITION (TUS7.GBN):** From over TUS VORTAC via TUS R-280 and GBN R-109 to GBN VORTAC.
- PHOENIX TRANSITION (TUS7.PXR):** From over TUS VORTAC via TUS R-319 and PXR R-127 to PXR VORTAC.
- SAN SIMON TRANSITION (TUS7.SSO):** From over TUS VORTAC via TUS R-038 and SSO R-261 to SSO VORTAC.

TUCSON SEVEN DEPARTURE