

# ILS RWY 36R (CAT II)

TULSA INTL (TUL)

LOC/DME I-TUL <b>110.3</b> Chan 40	APP CRS <b>357°</b>	Rwy Idg TDZE <b>650</b> Apt Elev <b>677</b>	<b>9999</b>
--	------------------------	---	-------------

**⚠** For inoperative ALSF, increase S-ILS 36R Cat E visibility to RVR 4000, and increase S-LOC 36R Cat E visibility to 2 1/4 mile. YEPUT fix minimums: For ASR inoperative ALSF, increase S-LOC 36R Cat E visibility to 1 1/2 mile.

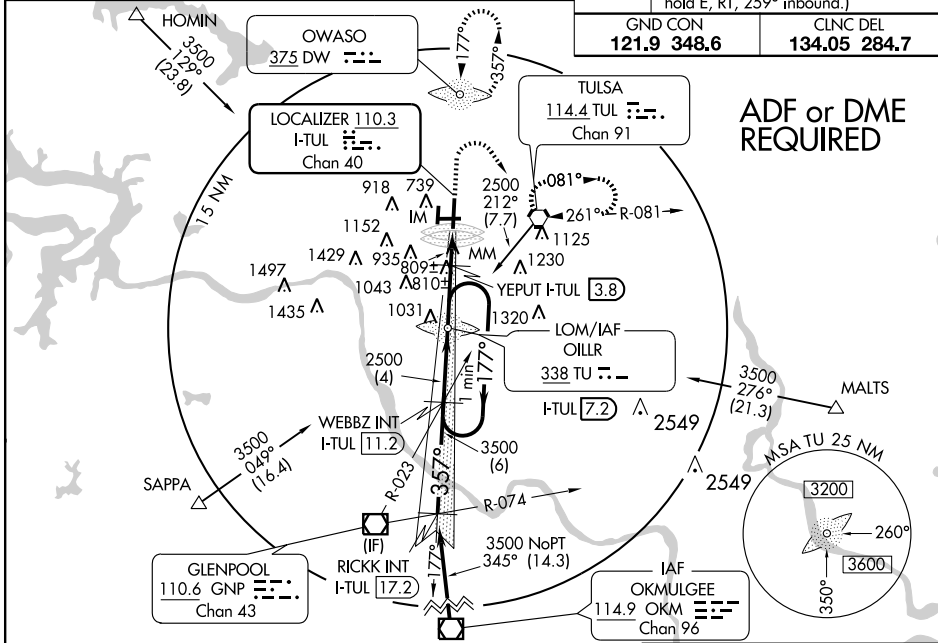
ALSF-2

**MISSED APPROACH:** Climb to 2000 then climbing right turn to 2500 direct TUL VORTAC and hold. (TACAN aircraft climb to 2000 then climbing right turn to 3500 via TUL VORTAC R-079 to INOLA INT/ 17.9 DME and hold E, RT, 259° inbound.)

ATIS <b>124.9 377.2</b>	TULSA APP CON <b>124.0 338.3</b>	TULSA TOWER <b>121.2 310.8</b> (Rwys 18L-36R, 8-26) <b>118.7 257.8</b> (Rwy 18R-36L)
----------------------------	-------------------------------------	--

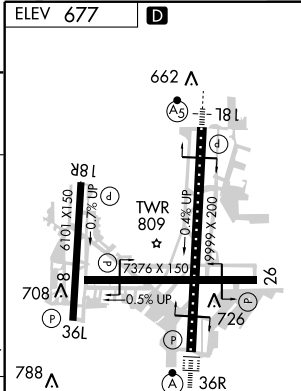
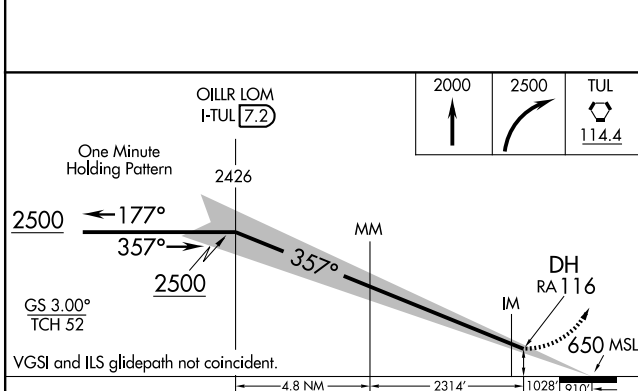
GND CON  
**121.9 348.6**

CLNC DEL  
**134.05 284.7**



SC-1, 11 MAR 2010 to 08 APR 2010

SC-1, 11 MAR 2010 to 08 APR 2010



CATEGORY	A	B	C	D
S-ILS 36R	RA 116/12 100 DA 750			

**CATEGORY II ILS-SPECIAL AIRCREW & AIRCRAFT CERTIFICATION REQUIRED**

TDZ/CL Rwy 36R  
HIRL Rwys 8-26, 18L-36R and 18R-36L  
REIL Rwys 8, 18R, 26 and 36L