

TULSA, OKLAHOMA

AL-432 (FAA)

RNAV (GPS) RWY 36R

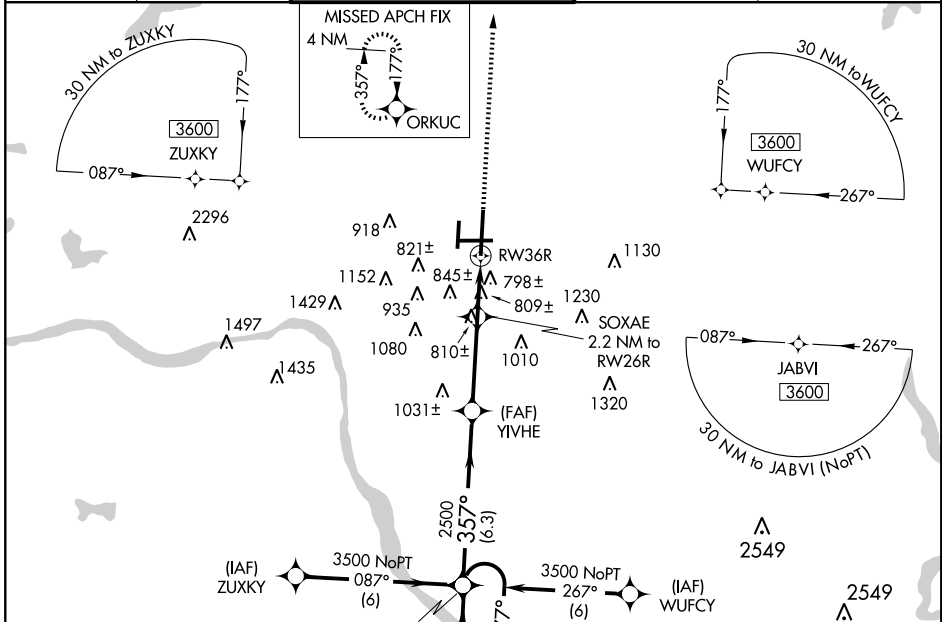
TULSA INTL (TUL)

WAAS CH 82214 W36A	APP CRS 357°	Rwy Idg 9999 TDZE 650 Apt Elev 677
--	------------------------	---

ASR Circling NA for Cat E south of runway 8-26. For uncompensated Baro-VNAV system, LNAV/VNAV NA below -16°C (4°F) or above 47°C (116°F). DME/DME RNP -0.3 NA. For inoperative ALSF increase LPV Cat E visibility 1/4 mile, LNAV/VNAV Cat E and LNAV Cat E visibility 1/2 mile.

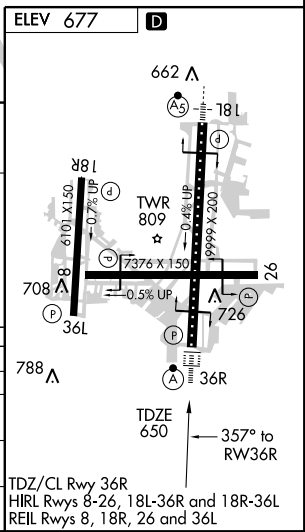
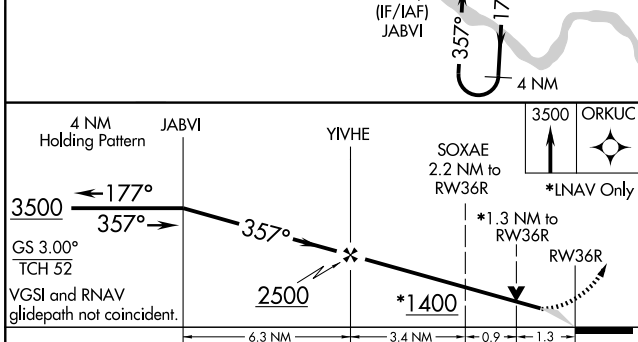
ALSF-2 MISSED APPROACH: Climb to 3500 direct ORKUC and hold.

ATIS 124.9 377.2	TULSA APP CON 124.0 338.3	TULSA TOWER 121.2 310.8 (Rwys 18L-36R, 8-26) 118.7 257.8 (Rwy 18R-36L)	GND CON 121.9 348.6	CLNC DEL 134.05 284.7
----------------------------	-------------------------------------	--	-------------------------------	---------------------------------



SC-1, 11 MAR 2010 to 08 APR 2010

SC-1, 11 MAR 2010 to 08 APR 2010



CATEGORY	A	B	C	D	E
LPV DA	850/24 200 (200-1/2)				
LNAV/VNAV DA	1145/60 495 (500-1/4)				
LNAV MDA	1120/24	470 (500-1/2)	1120/40 470 (500-3/4)	1120/50 470 (500-1)	1120/60 470 (500-1/4)
CIRCLING	1120-1 443 (500-1)	1140-1 463 (500-1)	1140-1 1/2 463 (500-1 1/2)	1300-2 623 (700-2)	1300-2 1/4 623 (700-2 1/4)

TDZ/CL Rwy 36R
HIRL Rwys 8-26, 18L-36R and 18R-36L
REIL Rwys 8, 18R, 26 and 36L

TULSA, OKLAHOMA
Amdt 1 09351

36°12'N-95°53'W

RNAV (GPS) RWY 36R

TULSA INTL (TUL)