

WACO, TEXAS

AL-439 (FAA)

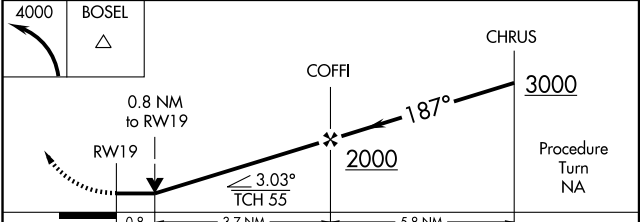
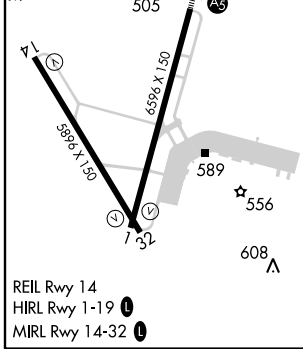
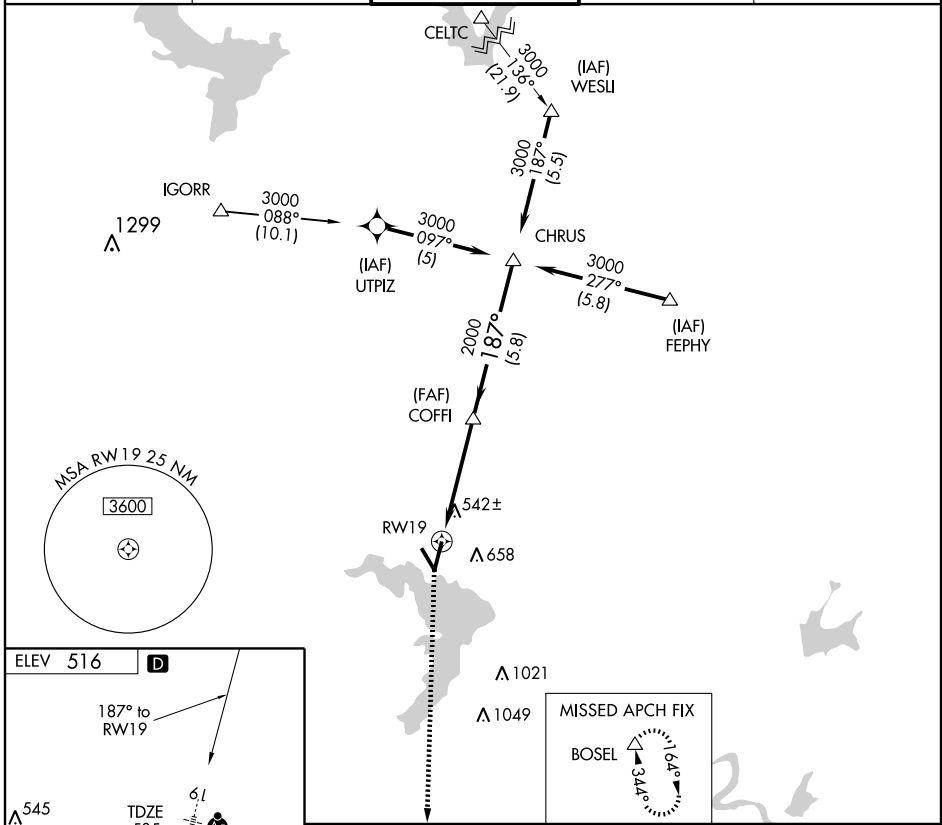
GPS RWY 19

WACO RGNL (ACT)

APP CRS	Rwy Idg	6596
187°	TDZE	505
	Apt Elev	516

<p>NA Inoperative table does not apply to S-19 Cat D.</p> <p>ASR</p>	<p>MALSR</p>	<p>MISSED APPROACH: Climbing left turn to 4000 direct BOSEL and hold.</p>

ATIS 123.85	WACO APP CON * 127.65 227.125	WACO TOWER * 119.3 (CTAF) 257.8	GND CON 121.9	UNICOM 122.95
-----------------------	---	---	-------------------------	-------------------------



CATEGORY	A	B	C	D
S-19	800/24 295 (300-½)			800/50 295 (300-1)
CIRCLING	920-1 404 (500-1)	980-1 464 (500-1)	980-1½ 464 (500-1½)	1080-2 564 (600-2)

WACO, TEXAS
Orig-B 10042

31°37'N-97°14'W

WACO RGNL (ACT)

GPS RWY 19

SC-3, 11 MAR 2010 to 08 APR 2010

SC-3, 11 MAR 2010 to 08 APR 2010