

WACO, TEXAS

AL-439 (FAA)

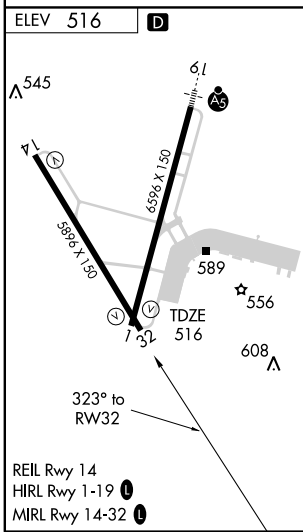
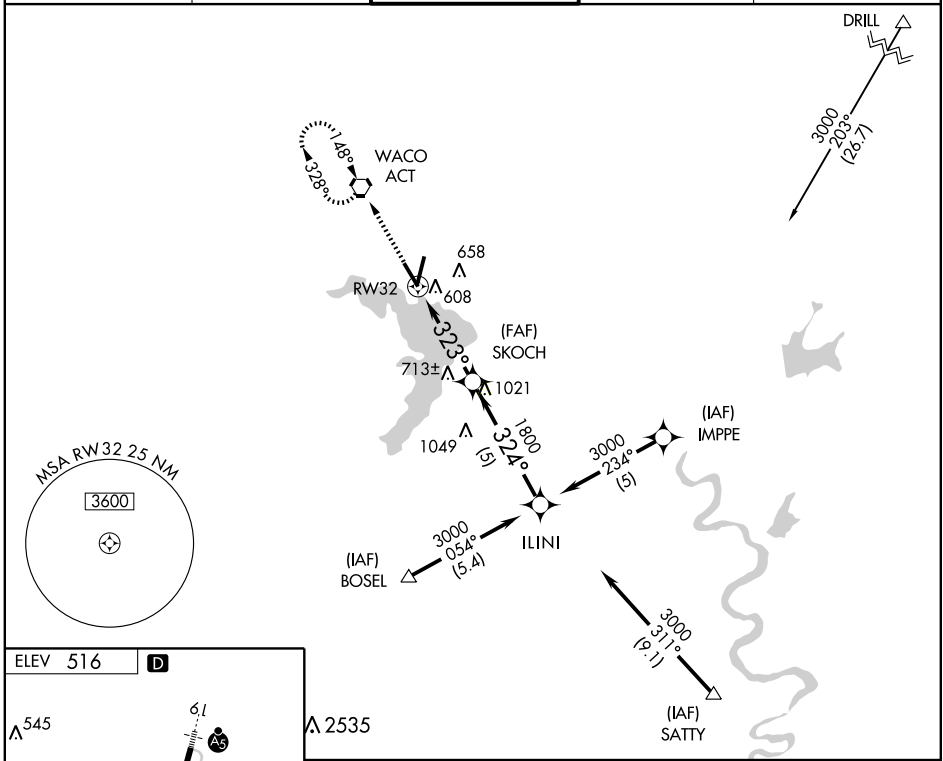
GPS RWY 32

WACO RGNL (ACT)

APP CRS	Rwy Idg	5896
323°	TDZE	516
	Apt Elev	516

<p>▲ NA</p> <p>ASR</p>	<p>MISSED APPROACH: Climb to 3000 direct ACT VORTAC and hold.</p>			
-------------------------------	---	--	--	--

<p>ATIS</p> <p>123.85</p>	<p>WACO APP CON *</p> <p>127.65 227.125</p>	<p>WACO TOWER *</p> <p>119.3 (CTAF) 0 257.8</p>	<p>GND CON</p> <p>121.9</p>	<p>UNICOM</p> <p>122.95</p>
----------------------------------	--	--	------------------------------------	------------------------------------



	0.9	1.0	2 NM	5 NM	
CATEGORY	A		B	C	D
S-32	860-1 344 (400-1)			860-1¼ 344 (400-1¼)	
CIRCLING	920-1 404 (500-1)	980-1 464 (500-1)	980-1½ 464 (500-1½)	1080-2 564 (600-2)	

WACO, TEXAS
Orig-A 10042

31°37'N-97°14'W

WACO RGNL (ACT)

GPS RWY 32

SC-3, 11 MAR 2010 to 08 APR 2010

SC-3, 11 MAR 2010 to 08 APR 2010