

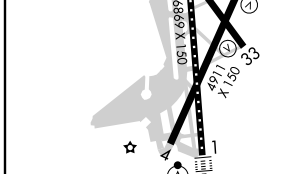
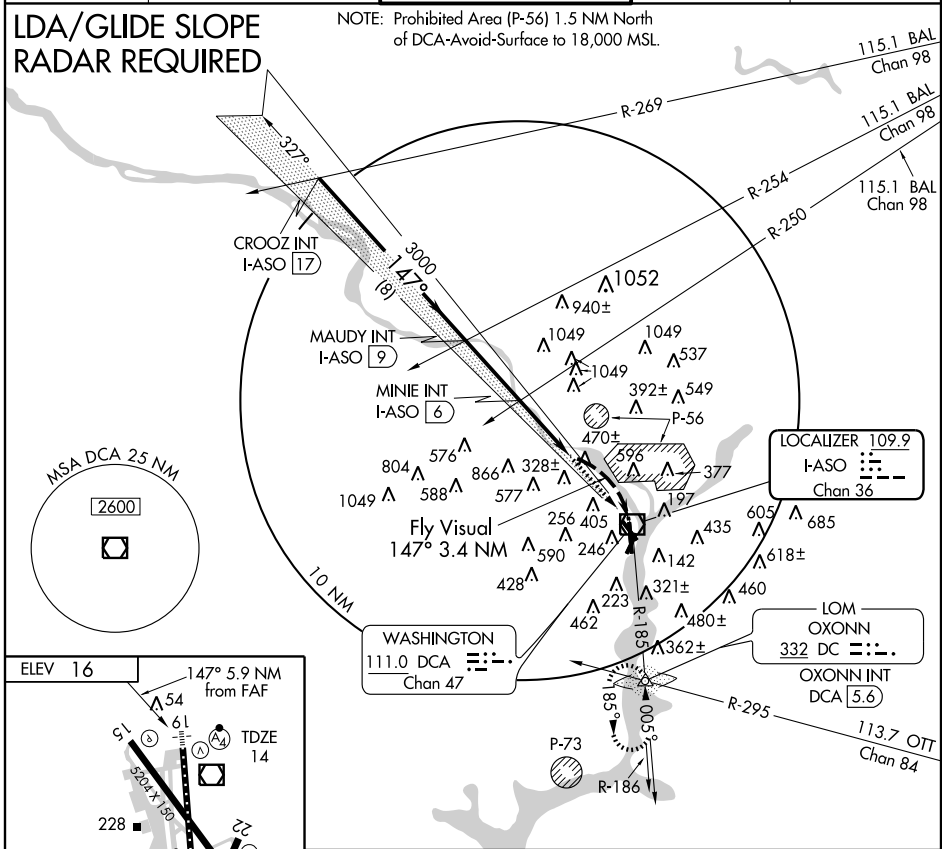
# ROSSLYN LDA RWY 19

LOC/DME I-ASO <b>109.9</b> Chan <b>36</b>	APP CRS <b>147°</b>	Rwy Idg <b>6869</b> TDZE <b>14</b> Apt Elev <b>16</b>
---	------------------------	---

WASHINGTON/RONALD REAGAN WASHINGTON NATIONAL (DCA)

<p>▼ Glide slope provided by standard glide slope equipment. ▲ Inoperative table does not apply. ▲ Circling Cats C and D not authorized northeast Rwy 15-33.</p>	<p>MALSF</p>	<p>MISSED APPROACH: Climb to 1800 direct DCA VOR/DME and R-185 to OXONN LOM/Int/DCA 5.6 DME and hold.</p>
--	--------------	---

ATIS <b>132.65</b>	POTOMAC APP CON <b>124.7 338.2</b>	WASHINGTON TOWER <b>119.1 257.6</b>	GND CON <b>121.7 257.6</b>	CLNC DEL <b>128.25</b>
-----------------------	---------------------------------------	--	-------------------------------	---------------------------



CROOZ INT I-ASO 17		MAUDY INT I-ASO 9		MINIE INT I-ASO 6		1800		DC	
GS NA below 1100 feet.		2894		1899		DCA R-185 111.0		332	
3000		*3000		2000		I-ASO 3.5		Fly Visual	
GS 3.00°		147°		147°		147°		3.4 NM	
8 NM		3 NM		2.5 NM		3.4 NM			
CATEGORY	A	B	C	D					
S-LDA/GS 19	1100-3		1086 (1100-3)						
S-LDA 19	1100-3		1086 (1100-3)						
CIRCLING	1100-3		1084 (1100-3)						

FAF to MAP 2.5 NM					
Knots	60	90	120	150	180
Min:Sec	2:30	1:40	1:15	1:00	0:50

NE-3, 11 MAR 2010 to 08 APR 2010

NE-3, 11 MAR 2010 to 08 APR 2010