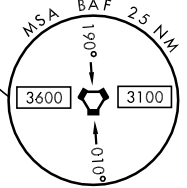


LOC I-BAF <b>111.9</b>	APCH CRS <b>204°</b>	Rwy Idg TDZE Arpt Elev <b>9000</b> <b>271</b> <b>271</b>	JAL-446 [USAF]	WESTFIELD/BARNES MUNI (BAF)
	MISSED APPROACH: Climb to 1300, then climbing right turn to 4000 direct CTR VOR/DME and hold. (TACAN och climb to 1300, then climbing right turn to 4000 via hdg 010° and BAF VORTAC R-321 to RITAS and hold.)			

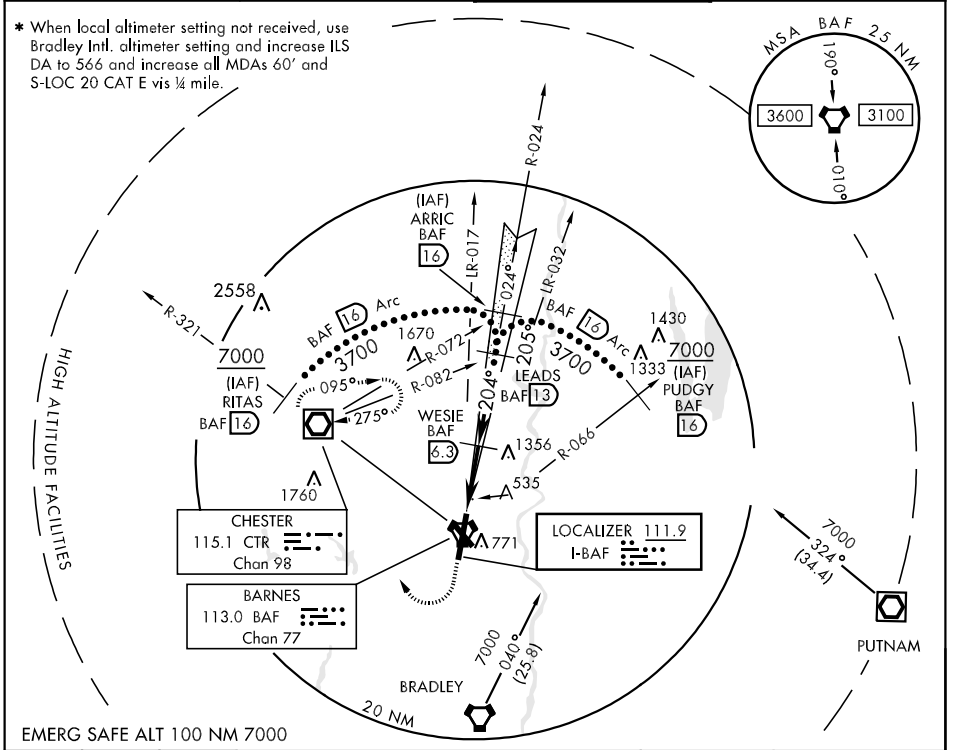
ATIS <b>263.15</b>	BRADLEY APP CON <b>125.35 281.5</b>	WESTFIELD TOWER ★ <b>118.9 (CTAF) 251.1</b>	GND CON <b>121.7 289.4</b>
-----------------------	--	--	-------------------------------

\* When local altimeter setting not received, use Bradley Intl. altimeter setting and increase ILS DA to 566 and increase all MDAs 60' and S-LOC 20 CAT E vis ¼ mile.



NE-1, 19 NOV 2009 to 17 DEC 2009

NE-1, 19 NOV 2009 to 17 DEC 2009



 ILS unusable from 0.6 NM to THLD VORTAC  0.6    5.2 NM	WESIE 2200 2200 2600 3700 GS 3.00° TCH 50	ARRIC R-024 16 3700	ELEV 271 204° 5.8 NM from FAF TDZE 271 305 332 337 TWR 348 308 313 312 316 311 376 Rwy 33 Idg 4775' MIRL Rwy 15-33 HIRL Rwy 2-20
CATEGORY S-ILS 20 * S-LOC 20 * CIRCLING	C 800/50 529 (600-1) 1160-2¾ 889 (900-2¾)	D 250 (300-¾) 800/60 529 (600-1¼) 1160-3 889 (900-3)	E 1500-3 1229 (1300-3)
FAF to MAP 5.2 NM			
Knots: 120 140 160 180 200			
Min:Sec: 2:36 2:14 1:57 1:44 1:34			