

LOC I-BAF <b>111.9</b>	APP CRS <b>204°</b>	Rwy Idg <b>8919</b>
		TDZE <b>271</b>
		Apt Elev <b>271</b>

# ILS or LOC RWY 20

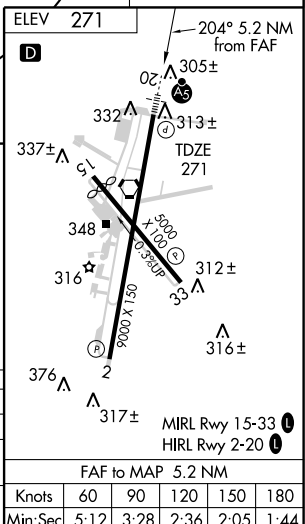
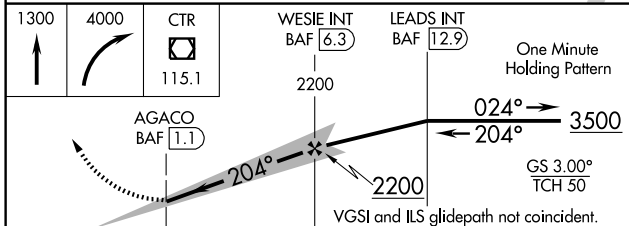
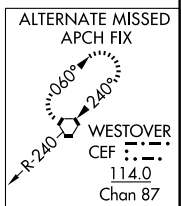
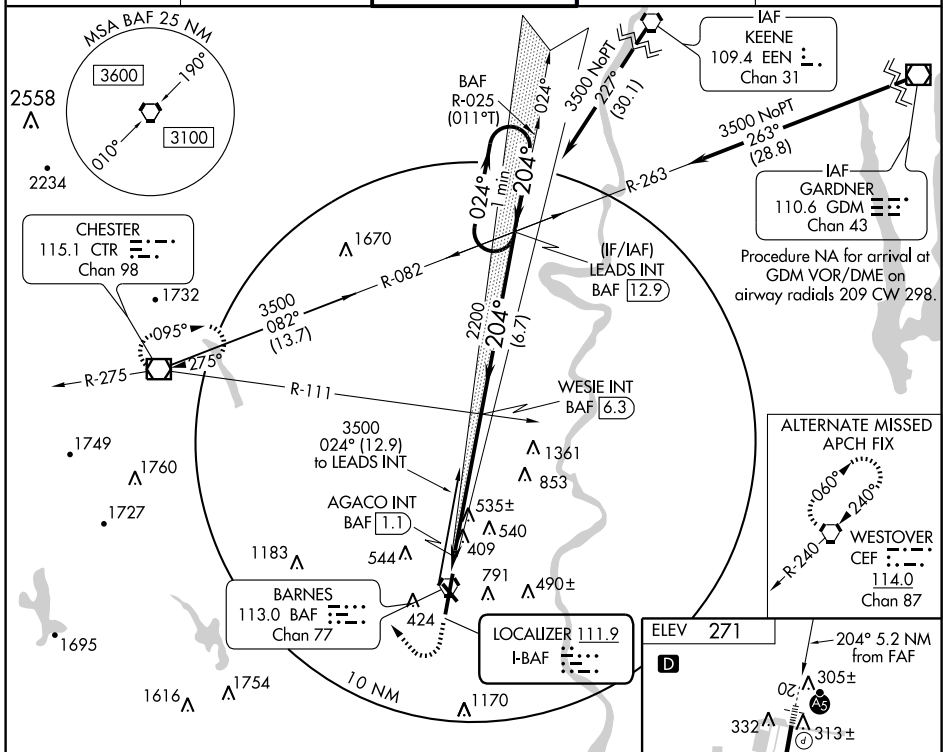
WESTFIELD / BARNES MUNI (BAF)

▼ If local altimeter setting not received, use Bradley Intl altimeter setting and increase ILS DA to 566 and increase all MDAs 60 feet.  
 ▲ For inoperative MALS/R, increase S-LOC 20 Cats A and B visibility to RVR 5000. Inoperative table does not apply to S-ILS 20. Visibility reduction by helicopters NA.



MISSED APPROACH: Climb to 1300 then climbing right turn to 4000 direct CTR VOR/DME and hold, continue climb-in-hold to 4000.

ATIS <b>127.1 263.15</b>	BRADLEY APP CON <b>125.35 281.5</b>	WESTFIELD TOWER* <b>118.9 (CTAF) 0 251.1</b>	GND CON <b>121.7 289.4</b>	CLNC DEL* <b>121.7</b>
-----------------------------	--	---	-------------------------------	---------------------------



CATEGORY	A	B	C	D
S-ILS 20	521/40 250 (300-¾)			
S-LOC 20	800/40 529 (600-¾)	800/50 529 (600-1)	800/60 529 (600-1¼)	
CIRCLING	1160-1¼ 889 (900-1¼)	1160-2¾ 889 (900-2¾)	1160-3 889 (900-3)	

NE-1, 19 NOV 2009 to 17 DEC 2009

NE-1, 19 NOV 2009 to 17 DEC 2009