

RNAV (GPS) RWY 20

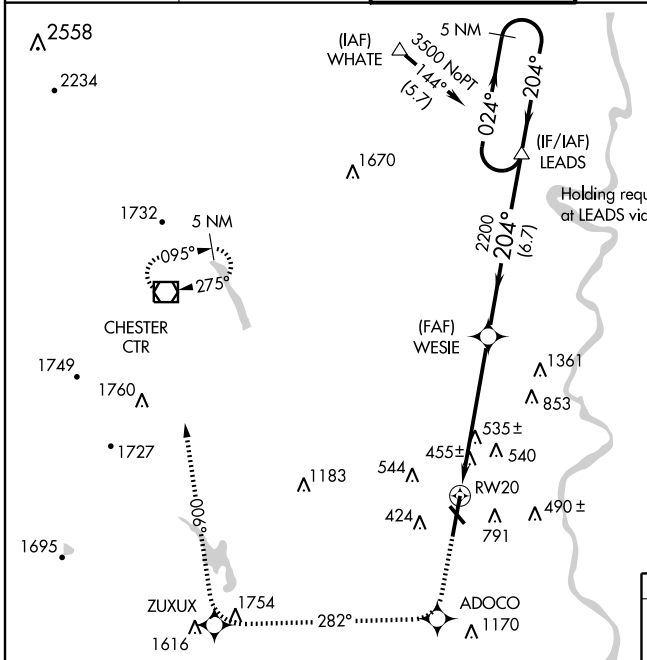
WESTFIELD/BARNES MUNI (BAF)

WAAS CH 86405 W20A	APP CRS 204°	Rwy Idg TDZE Apt Elev	8919 271 271
--	------------------------	-----------------------------	---

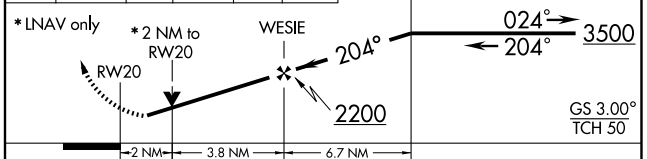
⚠ If local altimeter setting not received, use Bradley Intl altimeter setting and increase LPV DA to 665, LNAV/VNAV DA to 973, and all MDA's 60 feet. VDP NA when using Bradley Intl altimeter setting. Baro-VNAV NA when using Bradley Intl altimeter setting. For uncompensated Baro-VNAV systems, LNAV/VNAV NA below 15°C (5°F) or above 48°C (118°F). For inoperative MALSR, increase LPV visibility to RVR 6000 all Cats, increase LNAV Cats A and B visibility to RVR 5000. DME/DME RNP-0.3 NA. Visibility reduction by helicopters NA.

MALSR
MISSED APPROACH:
Climb to 4000 direct ADOCO and via 282° track to ZUXUX and via 006° track to CTR VOR/DME and hold.

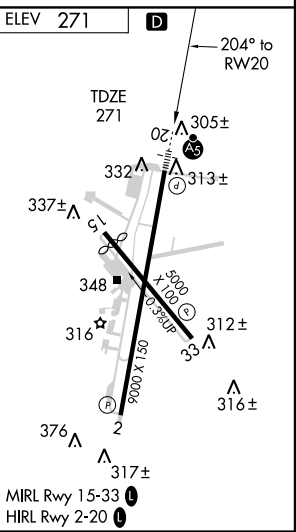
ATIS 127.1 263.15	BRADLEY APP CON 125.35 281.5	WESTFIELD TOWER ★ 118.9 (CTAF) 0 251.1	GND CON 121.7 289.4	CLNC DEL ★ 121.7
-----------------------------	--	--	-------------------------------	----------------------------



4000	ADOCO	282° TRK	ZUXUX	006° TRK	CTR	VGSI and RNAV glidepath not coincident. LEADS
↑	⊙	⬆	⊙	⊙	⊙	5 NM Holding Pattern



CATEGORY	A	B	C	D
LPV DA	620/40 349 (400-¾)			
LNAV/ VNAV DA	928-1¾ 657 (700-1¾)			
LNAV MDA	940/40 669 (700-¾)	940/60 669 (700-1¼)	940-1½ 669 (700-1½)	
CIRCLING	1160-1¼ 889 (900-1¼)	1160-2¾ 889 (900-2¾)	1160-3 889 (900-3)	



NE-1, 19 NOV 2009 to 17 DEC 2009

NE-1, 19 NOV 2009 to 17 DEC 2009