

BAF VORTAC 113.0 Chan 77	APP CRS 025°	Rwy Idg TDZE 265 Apt Elev 271	9000
--	------------------------	---	-------------

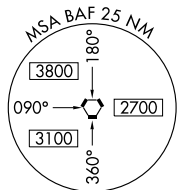
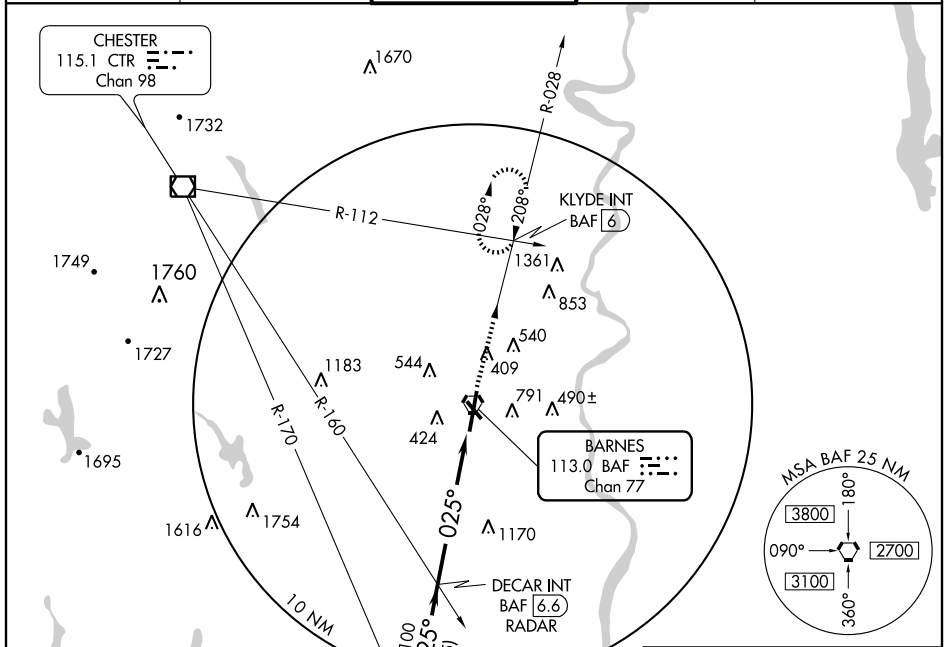
VOR or TACAN RWY 2

WESTFIELD/BARNES MUNI (BAF)

▼
▲

MISSED APPROACH: Climb to 3000 via the BAF VORTAC R-028 to KLYDE Int and hold.

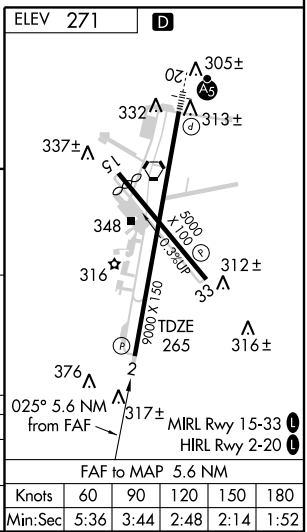
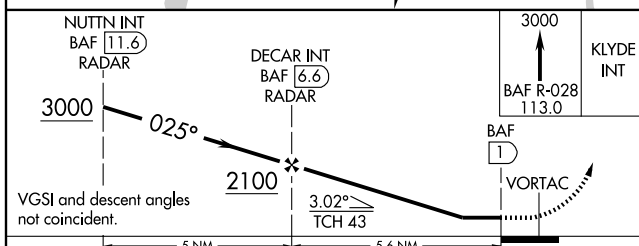
ATIS 127.1 263.15	BRADLEY APP CON 125.35 281.5	WESTFIELD TOWER* 118.9 (CTAF) 0 251.1	GND CON 121.7 289.4	CLNC DEL * 121.7
-----------------------------	--	--	-------------------------------	----------------------------



NE-1, 19 NOV 2009 to 17 DEC 2009

NE-1, 19 NOV 2009 to 17 DEC 2009

RADAR REQUIRED



CATEGORY	A	B	C	D	E
S-2	780-1	515 (600-1)	780-1½ 515 (600-1½)	780-1¾ 515 (600-1¾)	780-1¾ 515 (600-1¾)
CIRCLING	1160-1¼	889 (900-1¼)	1160-2¾ 889 (900-2¾)	1160-3	889 (900-3)

Knots	60	90	120	150	180
Min:Sec	5:36	3:44	2:48	2:14	1:52