

GPS RWY 2

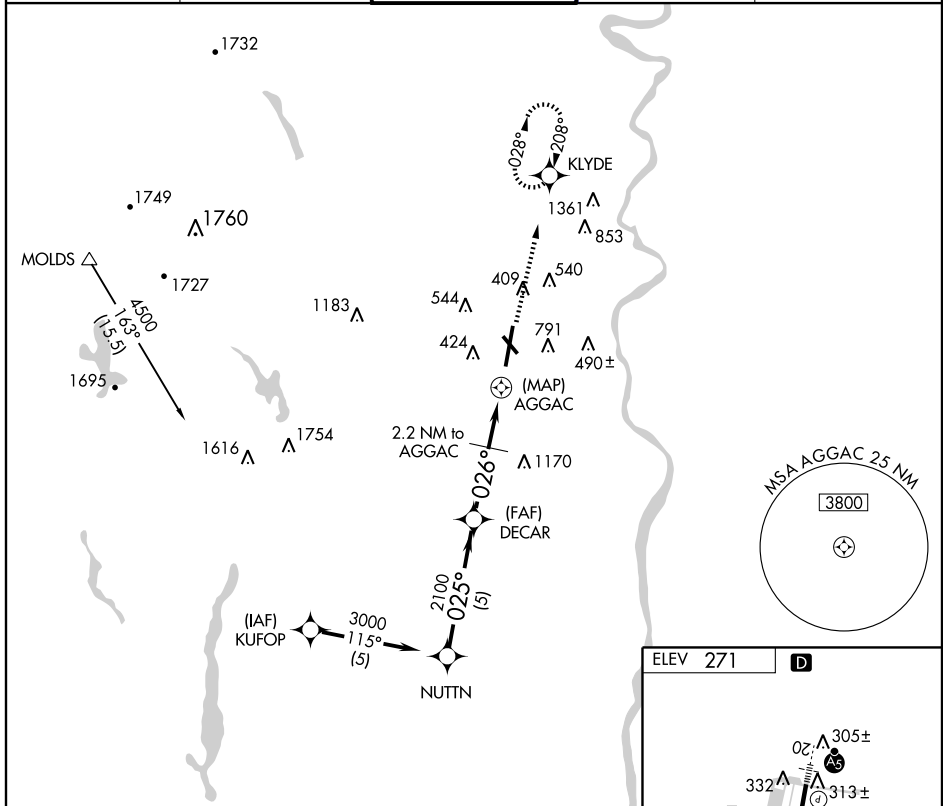
WESTFIELD/BARNES MUNI (BAF)

APP CRS	Rwy Idg	9000
026°	TDZE	265
	Apt Elev	271

NA

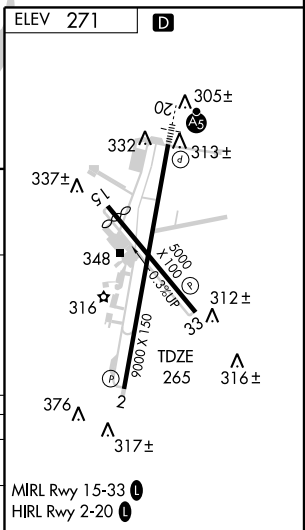
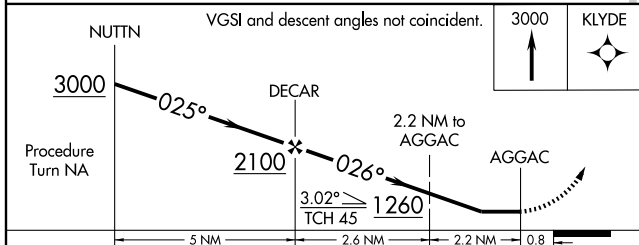
MISSED APPROACH: Climb to 3000 direct KLYDE WP and hold.

ATIS 127.1 263.15	BRADLEY APP CON 125.35 281.5	WESTFIELD TOWER* 118.9 (CTAF) 0 251.1	GND CON 121.7 289.4	CLNC DEL * 121.7
-----------------------------	--	---	-------------------------------	----------------------------



NE-1, 11 MAR 2010 to 08 APR 2010

NE-1, 11 MAR 2010 to 08 APR 2010



CATEGORY	A	B	C	D
S-2	920-1 655 (700-1)		920-1¾ 655 (700-1¾)	920-2 655 (700-2)
CIRCLING	1160-1¼ 889 (900-1¼)		1160-2¾ 889 (900-2¾)	1160-3 889 (900-3)