

LOC I-CEF 109.9	APCH CRS 228°	Rwy ldg 11,597 TDZE 241 Arpt Elev 241	AL-447 [USAF]	WESTOVER ARB/METROPOLITAN (KCEF)
---------------------------	-------------------------	--	---------------	----------------------------------

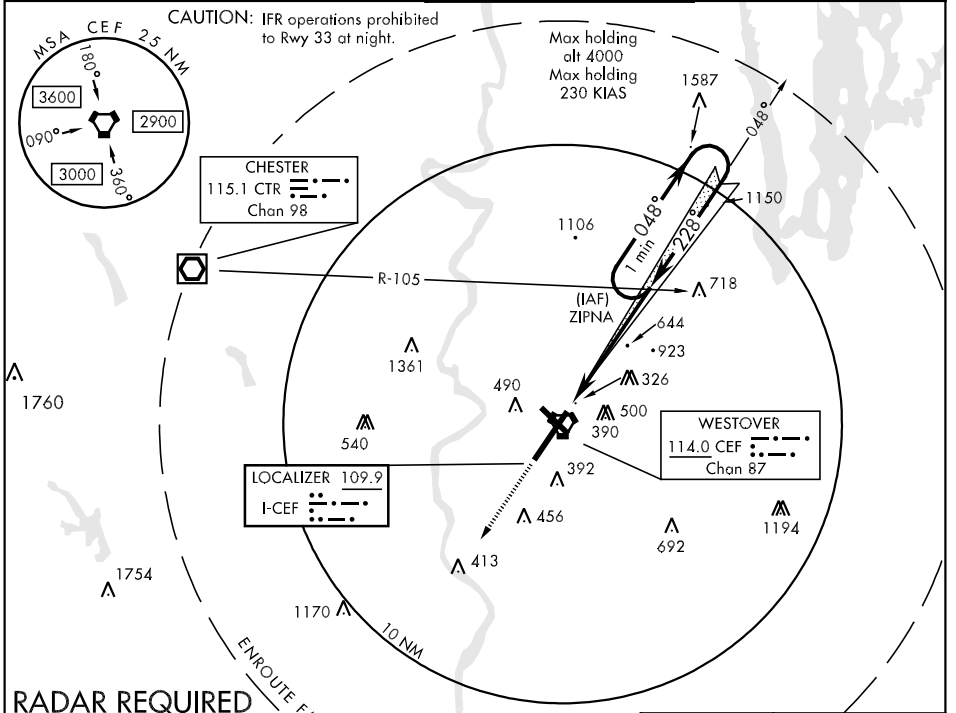
* When ALS inop, increase RVR to 40 and vis to ¾ mile.
 ** When ALS inop, increase CAT AB RVR to 50 and vis to 1 mile, CAT C vis to 1¾ miles, CAT D vis to 2 miles, CAT E vis to 2½ miles.



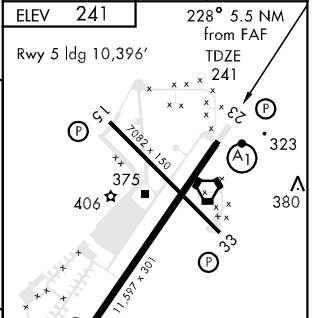
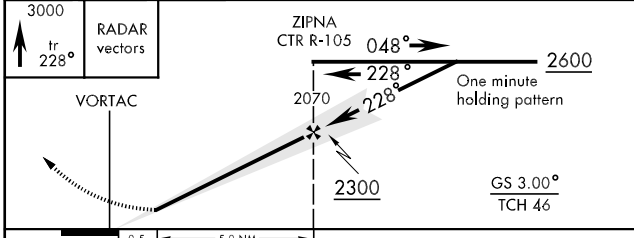
MISSED APPROACH: Climb to 3000 tracking 228°, expect RADAR vectors.

ATIS ★ 114.0 138.1	BRADLEY APP CON 125.35 281.5	WESTOVER TOWER ★ 134.85 (CTAF) 348.75	GND CON 118.35 275.8
------------------------------	--	---	--------------------------------

CAUTION: IFR operations prohibited to Rwy 33 at night.



RADAR REQUIRED
EMERG SAFE ALT 100 NM 6300



CATEGORY	A	B	C	D	E
S-ILS 23*	441/24		200	(200-½)	
S-LOC 23**	900/24	659 (700-½)	900/60 659(700-1¼)	900-1½ 659(700-1½)	900-1¾ 659(700-1¾)
CIRCLING	900-1	659 (700-1)	900-1¾ 659(700-1¾)	900-2 659(700-2)	1240-3 999(1000-3)

FAF to MAP 5.0 NM						
Knots	60	90	120	150	180	200
Min:Sec	4:58	3:19	2:29	1:59	1:39	1:30

NE-1, 11 MAR 2010 to 08 APR 2010

NE-1, 11 MAR 2010 to 08 APR 2010