

VORTAC CEF <b>114.0</b> Chan <b>87</b>	APCH CRS <b>222°</b>	Rwy ldg <b>11,597'</b> TDZE <b>241</b> Arpt Elev <b>241</b>
--	-------------------------	---

AL-447 [USAF]

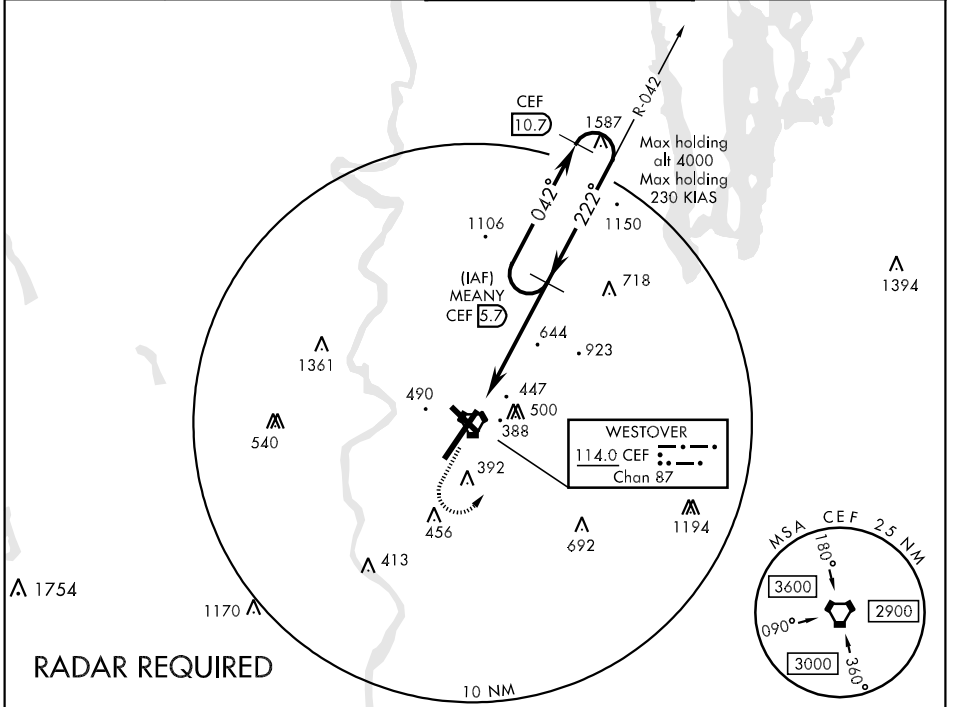
WESTOVER ARB/METROPOLITAN (KCEF)

**CAUTION:** IFR operations prohibited to Rwy 33 at night.  
 \* When ALS inop, increase CAT AB RVR to 50 and vis to 1 mile, CAT C RVR to 60 and vis to 1¼ miles, CAT DE vis to 1½ miles.



**MISSED APPROACH:** Climb to 2600 tracking 228°, passing 1200, turn left direct MEANY and hold.

ATIS ★ <b>114.0 138.1</b>	BRADLEY APP CON <b>125.35 281.5</b>	WESTOVER TOWER ★ <b>134.85 (CTAF) 348.75</b>	GND CON <b>118.35 275.8</b>
------------------------------	--	---	--------------------------------

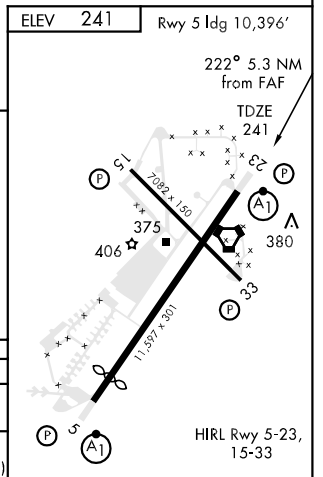
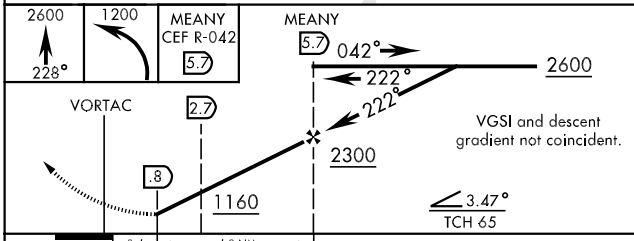


NE-1, 11 MAR 2010 to 08 APR 2010

NE-1, 11 MAR 2010 to 08 APR 2010

## RADAR REQUIRED

EMERG SAFE ALT 100 NM 6300



CATEGORY	A	B	C	D	E
S-23 *	700/24 459 (500-½)		700/40 459 (500-¾)	700/50 459 (500-1)	
CIRCLING	800-1 559 (600-1)		800-1½ 559 (600-1½)	800-2 559 (600-2)	1240-3 999 (1000-3)