

# AIRPORT DIAGRAM

AFD-447 [USAF]

WESTOVER ARB/METROPOLITAN (KCEF)

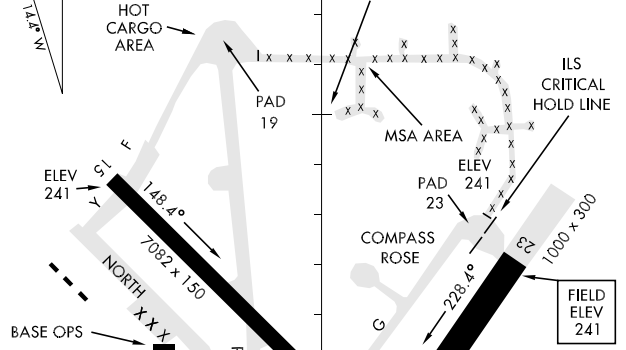
SPRINGFIELD/CHICOPEE, MASSACHUSETTS

ATIS ★  
 114.0 138.1  
 WESTOVER TOWER ★  
 134.85 348.75  
 CTAF  
 134.85  
 GND CON  
 118.35 275.8

42°13'N

72°33'W

SEPTEMBER 2008  
 ANNUAL RATE OF CHANGE  
 0.1° E



42°12'N

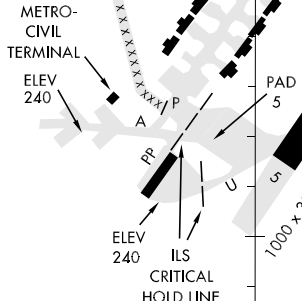
FIRE STATION  
 CONTROL TOWER  
 406

EAST RAMP

HANGAR

600 x 400  
 600 x 300  
 ELEV 240

42°11'N



RWY 5-23  
 S155, T250, ST175, TT380, TDT800  
 PCN 44 F/A/W/T  
 RWY 15-33  
 S95, T170, ST175, TT265  
 PCN 30 F/B/W/T  
 Rwy 5 ldg 10,396'

CAUTION: BE ALERT TO RUNWAY CROSSING CLEARANCES. READ BACK  
OF ALL RUNWAY HOLDING INSTRUCTIONS IS REQUIRED

NE-1, 11 MAR 2010 to 08 APR 2010

NE-1, 11 MAR 2010 to 08 APR 2010

# AIRPORT DIAGRAM

SPRINGFIELD/CHICOPEE, MASSACHUSETTS  
 WESTOVER ARB/METROPOLITAN (KCEF)