

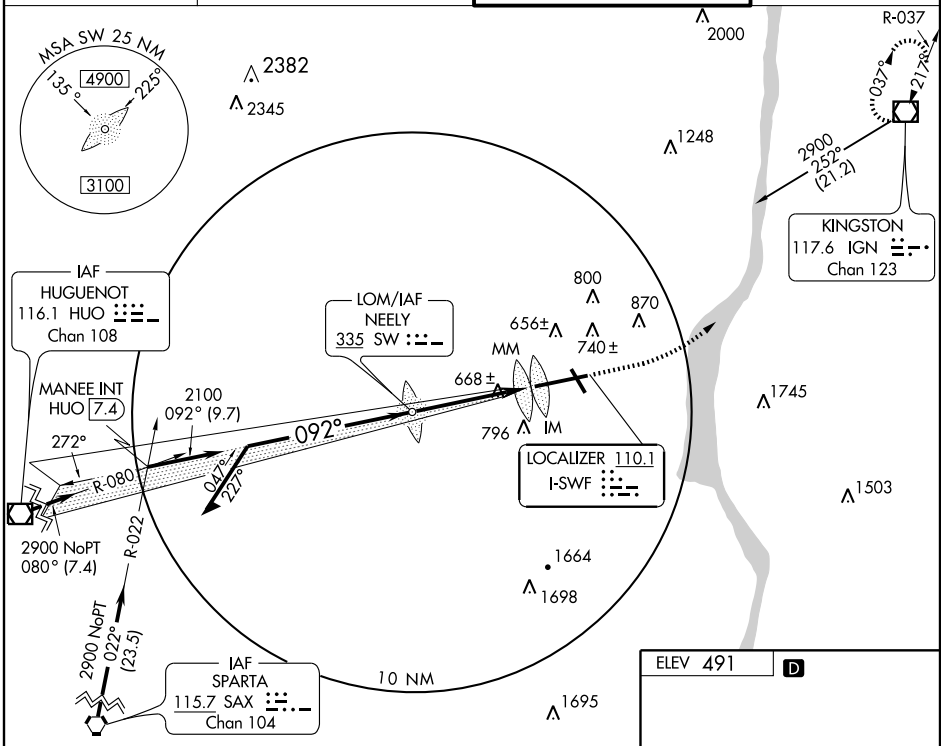
# COPTER ILS or LOC RWY 9

NEWBURGH/STEWART INTL (SWF)

LOC I-SWF <b>110.1</b>	APP CRS <b>092°</b>	Rwy Idg TDZE Apt Elev	<b>8818</b> <b>482</b> <b>491</b>
---------------------------	------------------------	-----------------------------	---

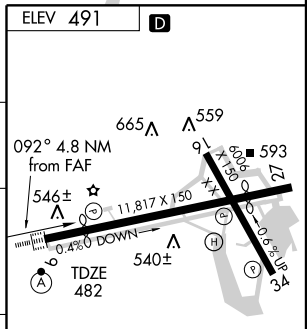
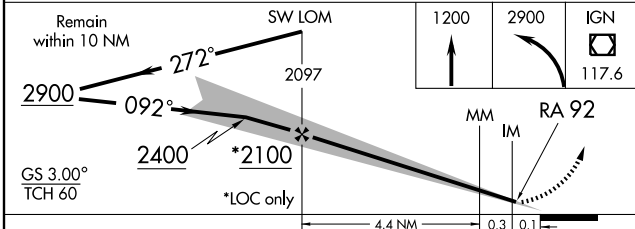
ALTIMETER REQUIRED		ALSF-2	MISSED APPROACH: Climb to 1200, then climbing left turn to 2900 direct IGN VOR/DME and hold.
--------------------	--	--------	--

ATIS <b>124.575</b>	NEW YORK APP CON <b>132.75 363.1</b>	STEWART TOWER <b>121.0 254.4</b>	GND CON <b>121.9</b>
------------------------	---	-------------------------------------	-------------------------



NE-2, 11 MAR 2010 to 08 APR 2010

NE-2, 11 MAR 2010 to 08 APR 2010



CATEGORY	COPTER	B	C	D
H-ILS 9	582/12 100 RA 92		NA	
H-LOC 9	920/12 438 (500-¼)		NA	

TDZ/CL Rwy 9  
HIRL Rwy 9-27  
MIRL Rwy 16-34  
REIL Rwys 16, 27 and 34

**COPTER ILS CATEGORY II - SPECIAL AIRCREW & AIRCRAFT CERTIFICATION REQUIRED**

FAF to MAP 4.8 NM					
Knots	45	60	75	90	105
Min:Sec	6:24	4:48	3:50	3:12	2:45