

RNAV (GPS) RWY 13

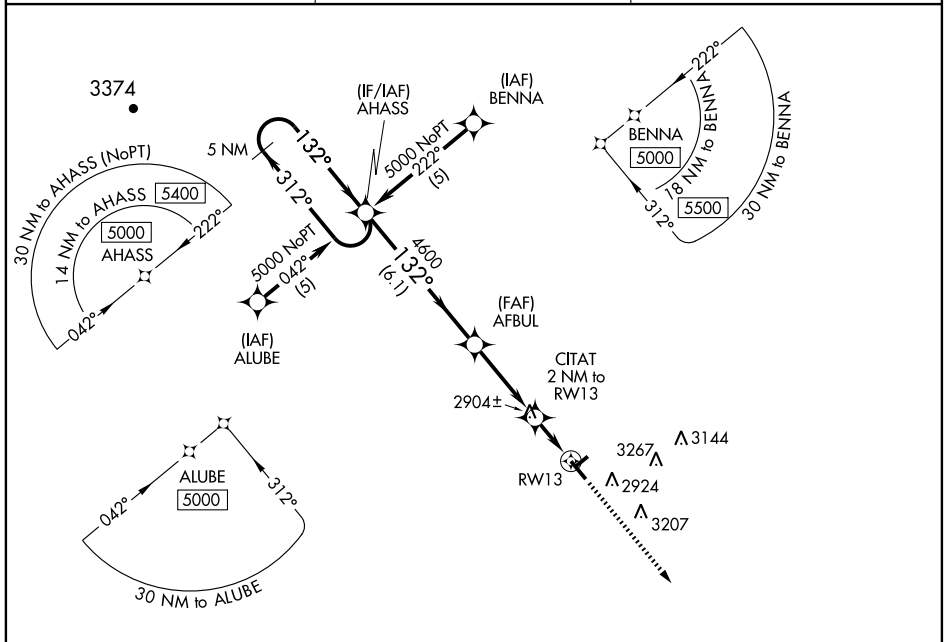
WINK/WINKLER COUNTY (INK)

APP CRS 132°	Rwy ldg 5003
	TDZE 2822
	Apt Elev 2822

⚠ DME/DME RNP-0.3 NA. When local altimeter setting not received, use Pecos altimeter setting and increase all MDA 100 feet and LNAV Cat C visibility ¼ mile. VDP NA when using Pecos altimeter setting.

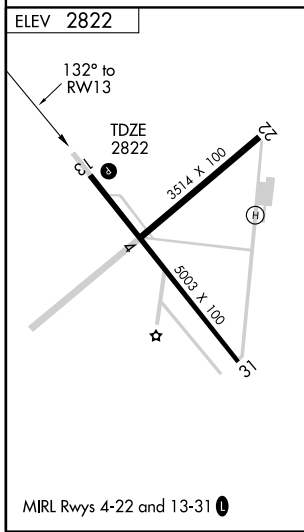
MISSED APPROACH: Climb to 5000 direct BORTY and hold.

ASOS 118.325	FORT WORTH CENTER 133.1 298.95	UNICOM 123.0 (CTAF) 0
------------------------	--	---------------------------------



SC-3, 11 MAR 2010 to 08 APR 2010

SC-3, 11 MAR 2010 to 08 APR 2010



5 NM Holding Pattern	5000	BORTY		
AHASS	AFBUL	CITAT 2 NM to RW13		
5000 ← 312°	4600	3500		
132° →	3.04° TCH 40	1 NM to RW13		
VGSIs and descent angles not coincident.				
6.1 NM 3.4 NM 1 NM 1 NM				
CATEGORY	A	B	C	D
LNAV MDA	3160-1 338 (400-1)			NA
CIRCLING	3280-1 458 (500-1)	3300-1 478 (500-1)	3300-1½ 478 (500-1½)	NA