

VORTAC INK 112.1 Chan 58	APP CRS 150°	Rwy Idg 5003 TDZE 2822 Apt Elev 2822
--	------------------------	---

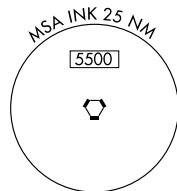
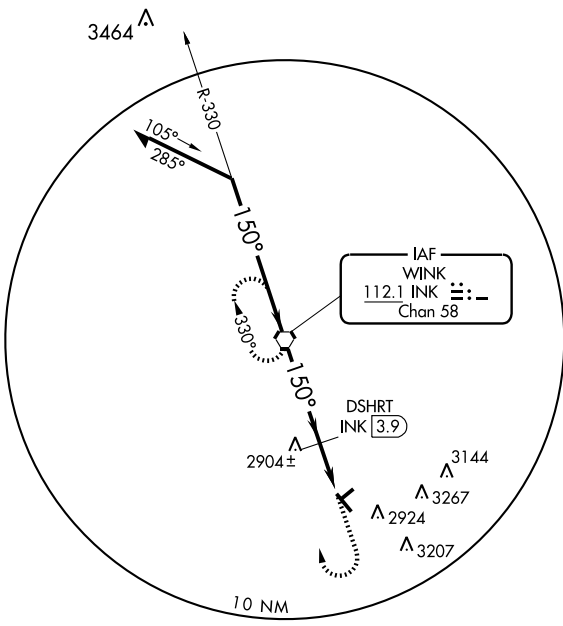
VOR RWY 13

WINK/WINKLER COUNTY (INK)

▼ When local altimeter setting not received, use Pecos altimeter setting and increase all MDAs 100 feet and Cat C visibility ¼ mile and increase DSHRT fix: all MDA 100 feet and S-13 Cat C visibility ¼ mile. VDP NA when using Pecos altimeter setting.

MISSED APPROACH: Climb to 3500 then climbing right turn to 5000 direct INK VORTAC and hold.

ASOS 118.325	FORT WORTH CENTER 133.1 298.95	UNICOM 123.0 (CTAF) 0
------------------------	--	---------------------------------



SC-3, 11 MAR 2010 to 08 APR 2010

SC-3, 11 MAR 2010 to 08 APR 2010

Remain within 10 NM

VORTAC

5000

330°

150°

4700

150°

2.99° TCH 40

*3340

3.9 NM

0.9

1 NM

DSHRT INK 3.9

1 NM to RWY 13 INK 4.8

INK 5.8

*3440 when using Pecos altimeter setting.

3500	5000	INK
↑	↷	112.1

CATEGORY	A	B	C	D
S-13	3340-1	518 (600-1)	3340-1½ 518 (600-1½)	NA
CIRCLING	3340-1	518 (600-1)	3340-1½ 518 (600-1½)	NA

DSHRT FIX MINIMUMS

S-13	3160-1	338 (400-1)	NA
------	--------	-------------	----

CIRCLING	A	B	C	D
S-13	3280-1 458 (500-1)	3300-1 478 (500-1)	3300-1½ 478 (500-1½)	NA

