

RNAV (GPS) RWY 12

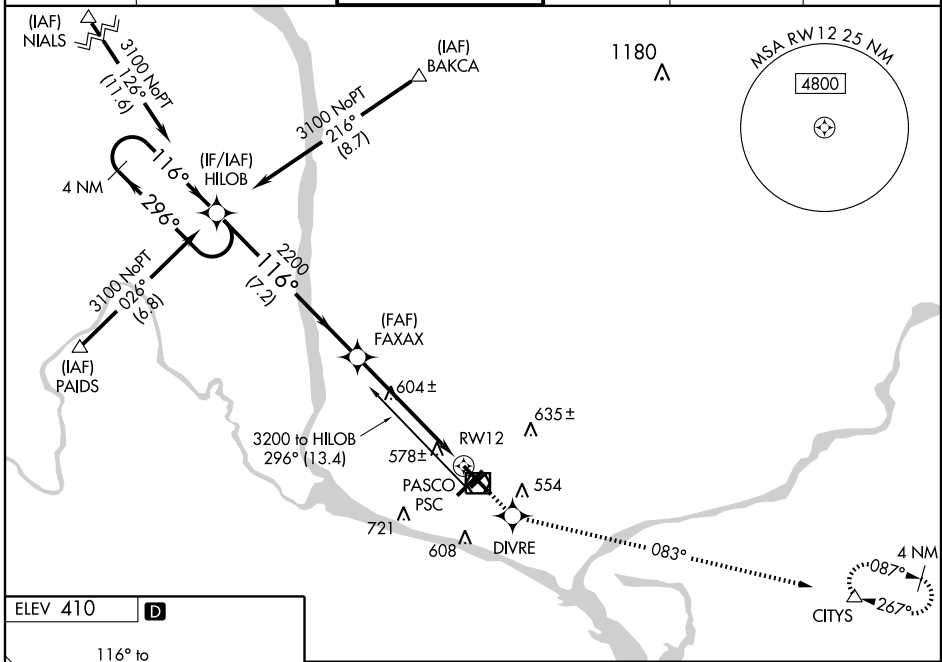
PASCO/TRI-CITIES (PSC)

| | | |
|--|------------------------|---|
| WAAS CH 58006 W12A | APP CRS 116° | Rwy Idg 7503 TDZE 402 Apt Elev 410 |
|--|------------------------|---|

⚠ When local altimeter setting not received, use Hermiston altimeter setting and increase all DAs/MDAs 100 feet and all visibilities 1/2 mile.
 For uncompensated Baro-VNAV systems, LNAV/VNAV NA below -15°C (5°F) or above 48°C (118°F).
 VDP and Baro-VNAV NA when using Hermiston altimeter setting.
 Circling to Rwy 3R NA at night. DME/DME RNP-0.3 NA.

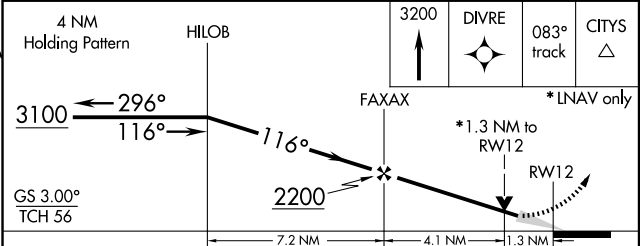
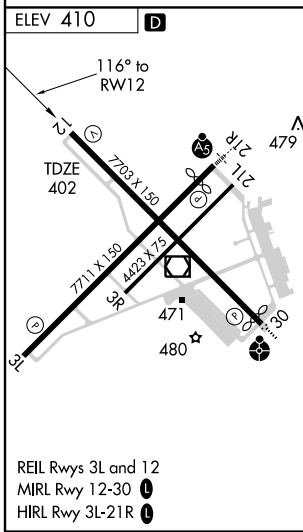
MISSED APPROACH: Climb to 3200 direct DIVRE and via 083° track to CITIES and hold.

| | | | | | |
|--------------------------------|---|--|-------------------------|--------------------------|-------------------------|
| ATIS * 125.65 | CHINOOK APP CON * 128.75 377.2 | TRI-CITIES TOWER * 135.3 (CTAF) 0 323.3 | GND CON 121.8 | CLNC DEL 120.0 | UNICOM 122.95 |
|--------------------------------|---|--|-------------------------|--------------------------|-------------------------|



NW-1, 11 MAR 2010 to 08 APR 2010

NW-1, 11 MAR 2010 to 08 APR 2010



| CATEGORY | A | B | C | D |
|--------------|---------------------|-------------|------------------------|------------------------|
| LPV DA | 748-1¼ 346 (400-1¼) | | | |
| LNAV/VNAV DA | 894-1¾ 492 (500-1¾) | | | |
| LNAV MDA | 860-1 | 458 (500-1) | 860-1¼ 458 (500-1¼) | 860-1½ 458 (500-1½) |
| CIRCLING | 920-1 | 510 (600-1) | 920-1½ 510 (600-1½) | 1040-2 630 (700-2) |