


RNAV (GPS) RWY 21R

PASCO/TRI-CITIES (PSC)

WAAS CH 40303 W21A	APP CRS 206°	Rwy Idg 7111 TDZE 404 Apt Elev 410
--	------------------------	---

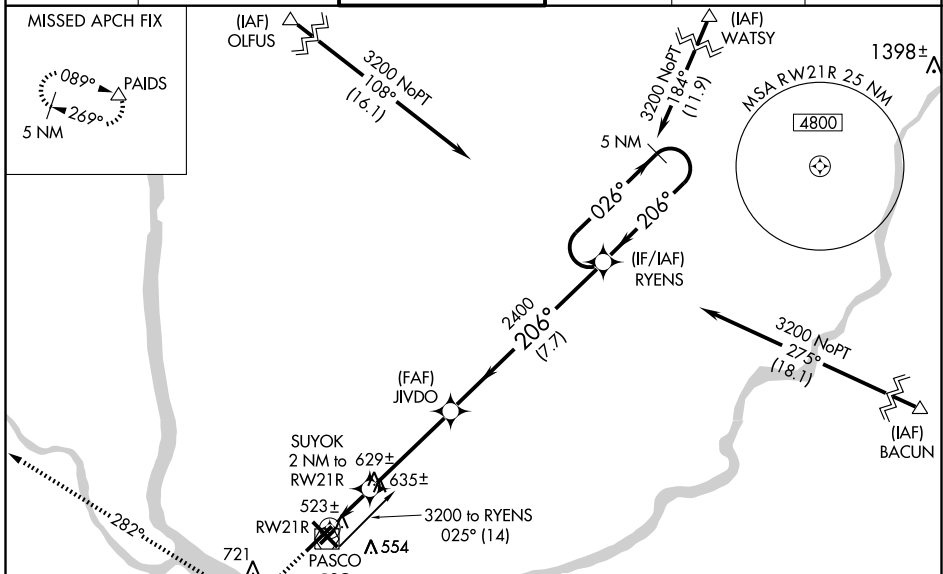
⚠ For inoperative MALS, increase LPV all Cats visibility to RVR 5000 and LNAV Cat D visibility to RVR 6000.
⚠ If local altimeter setting not received, use Hermiston altimeter setting and increase all DAs/MDAs 100 feet.
 For uncompensated Baro-VNAV systems, LNAV/VNAV NA below -15°C (5°F) or above 48°C (118°F). DME/DME RNP-0.3 NA. VDP and Baro-VNAV NA when using Hermiston altimeter setting.

MALS



MISSED APPROACH: Climb to 5200 direct TUPTTE and via 282° track to PAIDS and hold, continue climb-in-hold to 5200.

ATIS ★ 125.65	CHINOOK APP CON ★ 128.75 377.2	TRI-CITIES TOWER ★ 135.3 (CTAF) 0 323.3	GND CON 121.8	CLNC DEL 120.0	UNICOM 122.95
-------------------------	--	---	-------------------------	--------------------------	-------------------------



ELEV 410 **D**

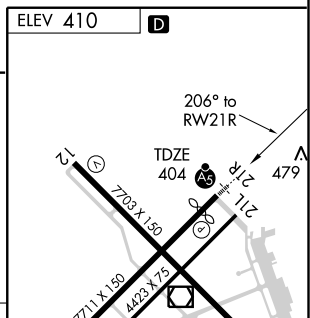
5200 ↑ TUPTTE 282° track PAIDS △ %1180 when using Hermiston altimeter setting. *LNAV only

JIVDO RYENS 5 NM Holding Pattern

SUYOK 2 NM to RW21R *1 NM to RW21R 1080*% 026° → 3200 ← 206°

GS 3.00° TCH 55

1 NM 1 NM 4 NM 7.7 NM



CATEGORY	A	B	C	D
LPV DA		680/24	276 (300-½)	
LNAV/VNAV DA		797/40	393 (400-¾)	
LNAV MDA	780/24	376 (400-½)		780/50 376 (400-1)
CIRCLING	880-1	470 (500-1)	900-1½ 490 (500-1½)	1040-2 630 (700-2)

REIL Rwy 3L and 12
 MIRL Rwy 12-30 **⦿**
 HIRL Rwy 3L-21R **⦿**

NW-1, 19 NOV 2009 to 17 DEC 2009

NW-1, 19 NOV 2009 to 17 DEC 2009