

# RNAV (GPS) RWY 3L

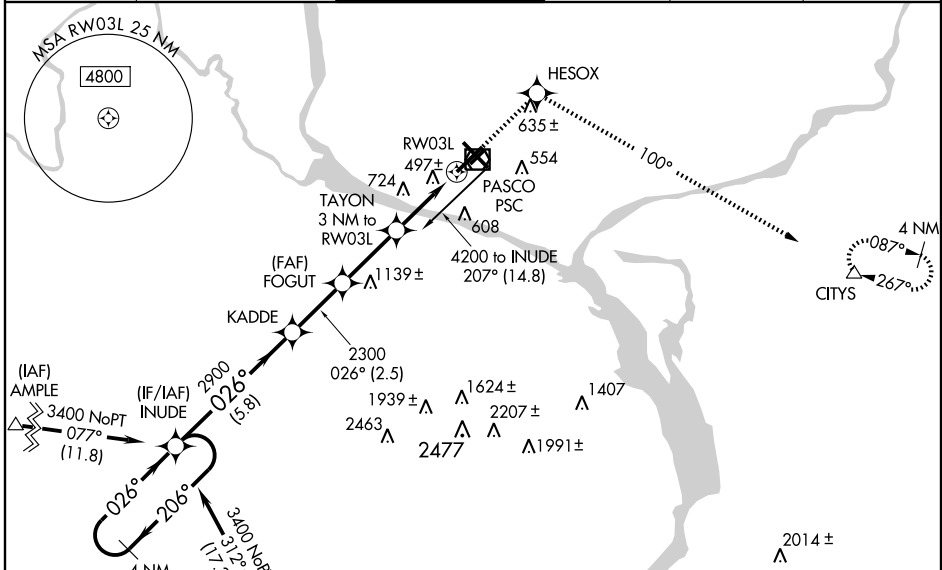
PASCO/TRI-CITIES (PSC)

WAAS CH <b>40206</b> <b>W03A</b>	APP CRS <b>026°</b>	Rwy Idg <b>7111</b> TDZE <b>410</b> Apt Elev <b>410</b>
--	------------------------	---

**⚠** When local altimeter setting not received, use Hermiston altimeter setting and increase all DAs/MDAs 100 feet and all visibilities ¼ mile.  
**⚠** For uncompensated Baro-VNAV systems, LNAV/VNAV NA below -15°C (5°F) or above 48°C (118°F).  
 VDP and Baro-VNAV NA when using Hermiston altimeter setting.  
 Circling to Rwy 3R NA at night. Visibility reduction by helicopters NA.  
 DME/DME RNP- 0.3 NA.

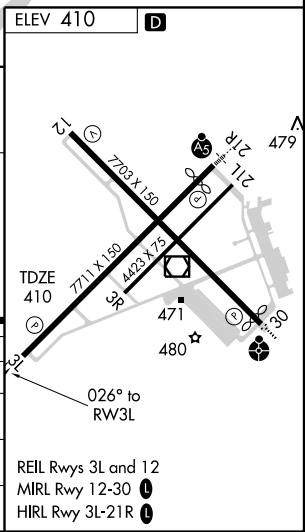
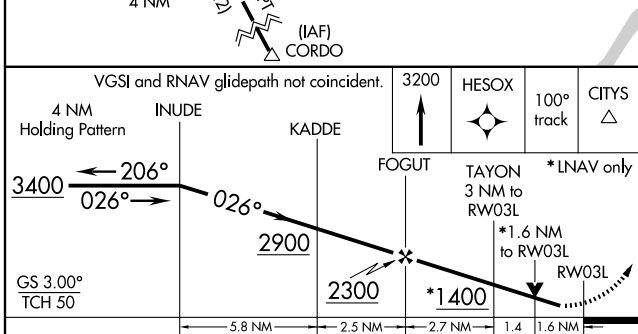
**MISSED APPROACH:** Climb to 3200 direct HESOX and via 100° track to CITYS and hold.

ATIS ★ <b>125.65</b>	CHINOOK APP CON★ <b>128.75 377.2</b>	TRI-CITIES TOWER★ <b>135.3 (CTAF) 0 323.3</b>	GND CON <b>121.8</b>	CLNC DEL <b>120.0</b>	UNICOM <b>122.95</b>
-------------------------	---	--	-------------------------	--------------------------	-------------------------



NW-1, 19 NOV 2009 to 17 DEC 2009

NW-1, 19 NOV 2009 to 17 DEC 2009



CATEGORY	A	B	C	D
LPV DA	660-1 250 (300-1)			
LNNAV/VNAV DA	829-1½ 419 (500-1½)			
LNNAV MDA	960-1	550 (600-1)	960-1½ 550 (600-1½)	960-1¾ 550 (600-1¾)
CIRCLING	960-1	550 (600-1)	960-1½ 550 (600-1½)	1040-2 630 (700-2)