


VOR/DME PSC <b>108.4</b> Chan 21	APP CRS <b>195°</b>	Rwy Idg TDZE <b>404</b> Apt Elev <b>410</b>	<b>7111</b>
--	------------------------	---	-------------

# VOR RWY 21R

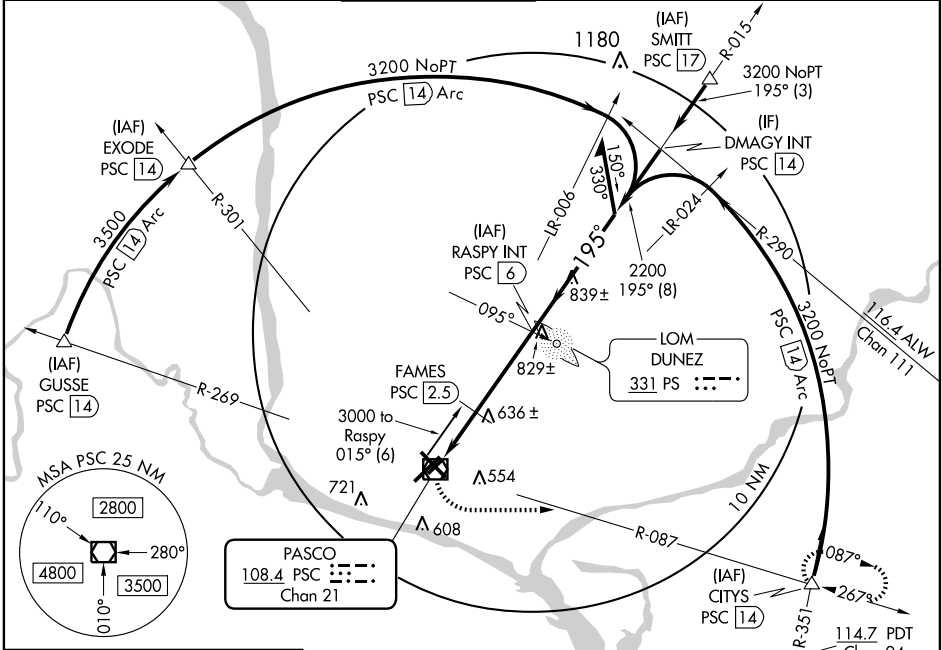
PASCO/ TRI-CITIES (PSC)

**⚠** If local altimeter setting not received, use Hermiston altimeter setting and increase all MDAs 100 feet.  
**⚠** VDP NA when using Hermiston altimeter setting.  
 ADF or DME required. Circling to Rwy 03R NA at night.

MALSR 

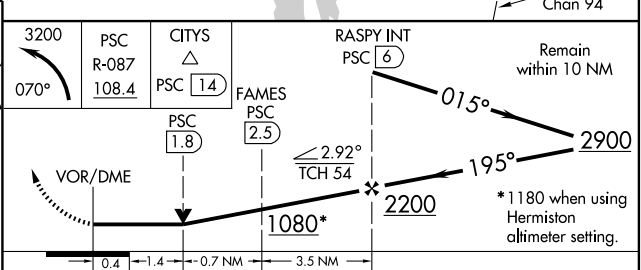
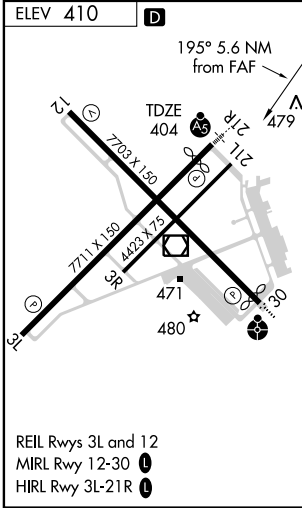
MISSED APPROACH: Climbing left turn to 3200 via heading 070° and PSC VOR/DME R-087 to CITIES INT/PSC 1.4 DME and hold.

ATIS★ <b>125.65</b>	CHINOOK APP CON★ <b>128.75 377.2</b>	TRI-CITIES TOWER★ <b>135.3</b> (CTAF) <b>323.3</b>	GND CON <b>121.8</b>	CLNC DEL <b>120.0</b>	UNICOM <b>122.95</b>
------------------------	---	---	-------------------------	--------------------------	-------------------------



NW-1, 19 NOV 2009 to 17 DEC 2009

NW-1, 19 NOV 2009 to 17 DEC 2009



CATEGORY	A	B	C	D
S-21R	1080/24 676 (700-½)		1080-1½ 676 (700-1½)	1080-1¾ 676 (700-1¾)
CIRCLING	1080-1 670 (700-1)		1080-2 670 (700-2)	1080-2¼ 670 (700-2¼)
<b>FAMES FIX MINIMUMS</b>				
S-21R	900/24 496 (500-½)		900/40 496 (500-¾)	900/50 496 (500-1)
CIRCLING	920-1 510 (600-1)		920-1½ 510 (600-1½)	1040-2 630 (700-2)