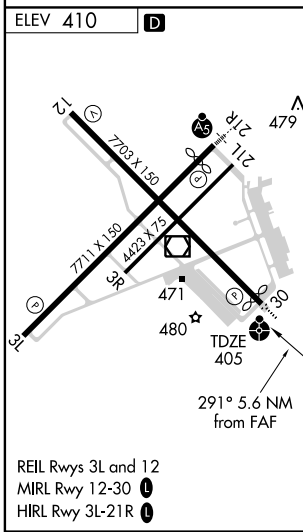
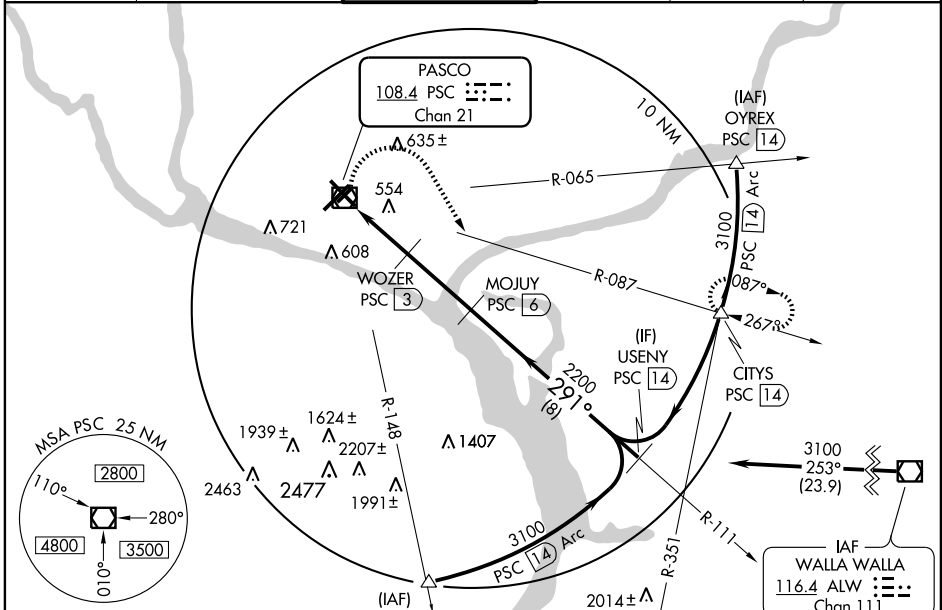


VOR/DME PSC 108.4 Chan 21	APP CRS 291°	Rwy Idg TDZE Apt Elev	7503 405 410
--	------------------------	-----------------------------	---

VOR/DME RWY 30

PASCO/TRI-CITIES (PSC)

<p>▽ Inoperative table does not apply to Cat C. ▲ Visibility reduction by helicopters NA. When local altimeter setting not received, use Hermiston altimeter setting and increase all MDA 100 feet, increase S-30 visibility Cat C ¼ mile, Cat D ½ mile and circling Cat D ¼ mile.</p>		<p>ODALS MISSED APPROACH: Climbing right turn to 3200 via heading 130° and PSC R-087 to CITYS INT/PSC 14 DME and hold.</p>			
ATIS* 125.65	CHINOOK APP CON* 128.75 377.2	TRI-CITIES TOWER* 135.3 (CTAF) 323.3	GND CON 121.8	CLNC DEL 120.0	UNICOM 122.95



ELEV 410	<p>Procedure NA for arrivals on ALW VOR/DME airway radials 209 CW 308.</p>			
3200	PSC R-087 108.4	CITYS △	USENY PSC 14	
		WOZER PSC 3	MOJUJ PSC 6	
	PSC 0.4	PSC 1.6	291°	3100
	1.1 NM	1.5 NM	3 NM	8 NM
CATEGORY	A	B	C	D
S-30	820-¾ 415 (500-¾)		820-1¼ 415 (500-1¼)	
CIRCLING	860-1 450 (500-1)		900-1½ 490 (500-1½)	1040-2 630 (700-2)

NW-1, 19 NOV 2009 to 17 DEC 2009

NW-1, 19 NOV 2009 to 17 DEC 2009