

RNAV (GPS) RWY 26

DEMING MUNI (DMN)

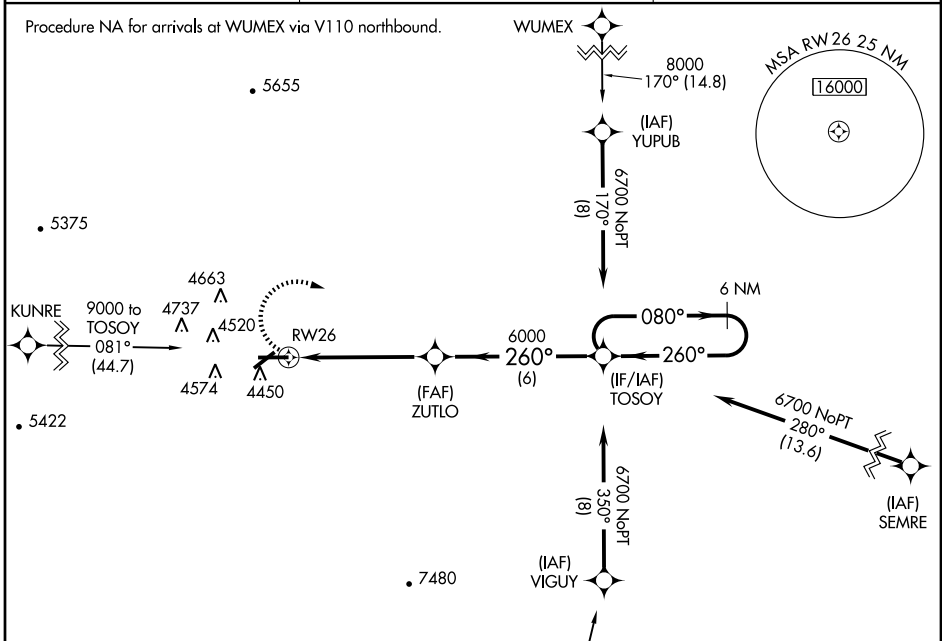
APP CRS 260°	Rwy Idg 6627
	TDZE 4303
	Apt Elev 4314

▼ If local altimeter setting not received, use Las Cruces Intl altimeter setting and increase all MDAs 120 feet.
▲ DME/DME RNP-0.3 NA.

MISSED APPROACH: Climbing right turn to 6700 direct TOSOY and hold.

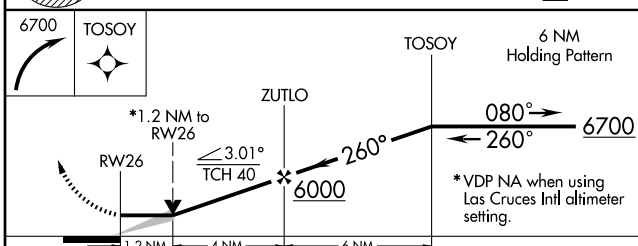
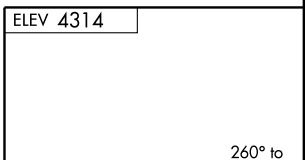
ASOS 118.525	ALBUQUERQUE CENTER 128.2 285.5	UNICOM 122.8 (CTAF) ☉
------------------------	--	---------------------------------

Procedure NA for arrivals at WUMEX via V110 northbound.

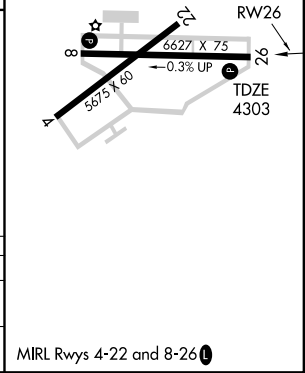


SW-1, 19 NOV 2009 to 17 DEC 2009

SW-1, 19 NOV 2009 to 17 DEC 2009



CATEGORY	A	B	C	D
LNVA MDA	4720-1	417 (500-1)	4720-1¼	417 (500-1¼)
CIRCLING	4820-1 506 (600-1)	4940-1 626 (700-1)	4940-1¾ 626 (700-1¾)	4940-2 626 (700-2)



MIRL Rwy's 4-22 and 8-26 ☉