

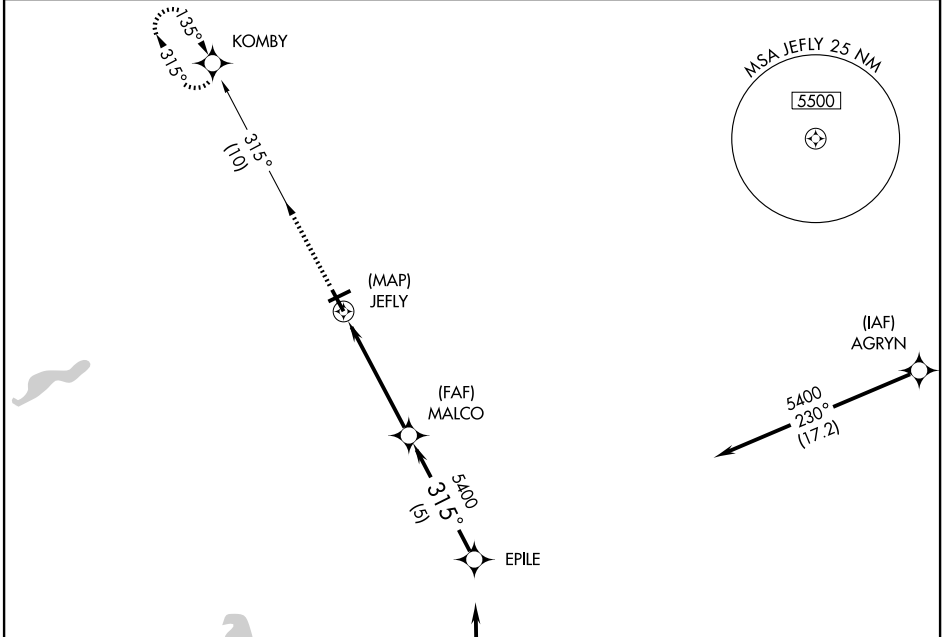
GPS RWY 31

CUT BANK MUNI (CTB)

APP CRS	Rwy Idg	5300
315°	TDZE	3847
	Apt Elev	3854

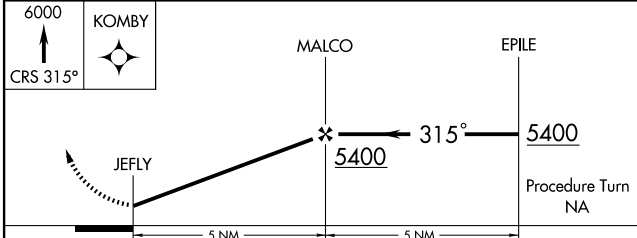
NA **IAF** ARM APPROACH MODE PRIOR TO IAF. MISSED APPROACH: Climb to 6000 via 315° course to KOMBY WP and hold.

ASOS 119.025	SALT LAKE CITY CENTER 133.4 285.4	UNICOM 122.8 (CTAF)
------------------------	---	-------------------------------



NW-1, 19 NOV 2009 to 17 DEC 2009

NW-1, 19 NOV 2009 to 17 DEC 2009



CATEGORY	A	B	C	D
S-31	4220-1 373 (400-1)			4220-1½ 373 (400-1½)
CIRCLING	4220-1 366 (400-1)	4320-1 466 (500-1)	4320-1½ 466 (500-1½)	4420-2 566 (600-2)

