

CUT BANK, MONTANA

AL-484 (FAA)

VORTAC CTB 114.4 Chan 91	APP CRS 315°	Rwy Idg TDZE Apt Elev	5300 3847 3854
---------------------------------------	------------------------	-----------------------------	---

VOR RWY 31

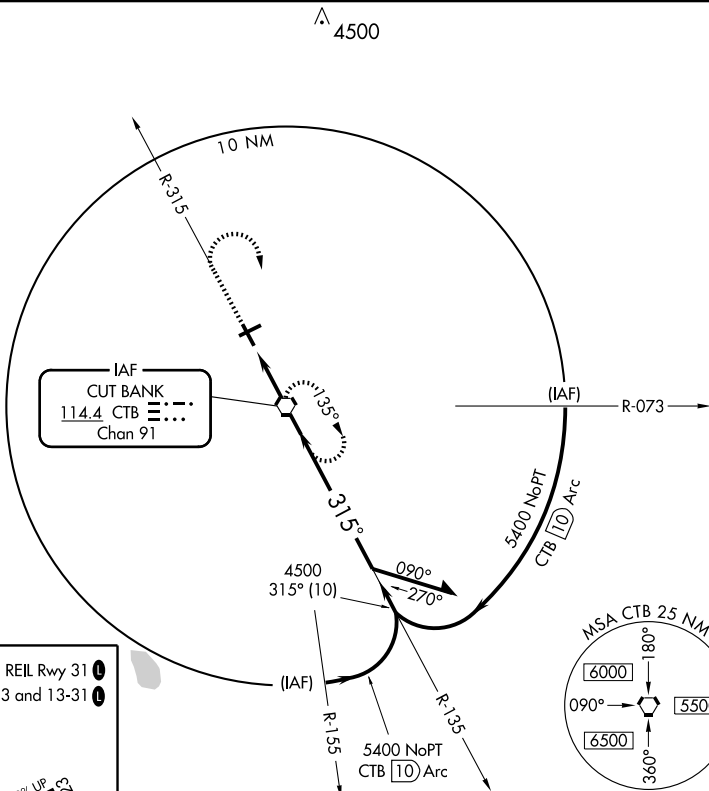
CUT BANK MUNI (CTB)

MISSED APPROACH: Climb to 5400 via CTB R-315 then right turn direct CTB VORTAC and hold.

ASOS
119.025

SALT LAKE CITY CENTER
133.4 285.4

UNICOM
122.8 (CTAF)



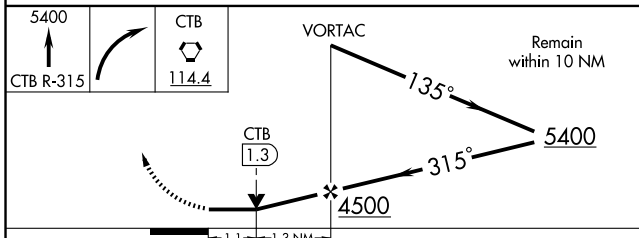
NW-1, 19 NOV 2009 to 17 DEC 2009

NW-1, 19 NOV 2009 to 17 DEC 2009

ELEV 3854 REIL Rwy 31
MIRL Rwys 5-23 and 13-31

315° 2.4 NM from FAF

FAF to MAP 2.4 NM					
Knots	60	90	120	150	180
Min:Sec	2:24	1:36	1:12	0:58	0:48



CATEGORY	A	B	C	D
S-31	4200-1 353 (400-1)			4200-1½ 353 (400-1½)
CIRCLING	4340-1	486 (500-1)	4340-1½ 486 (500-1½)	4420-2 566 (600-2)

CUT BANK, MONTANA
Amdt 15 08101

48°37'N - 112°23'W

CUT BANK MUNI (CTB) VOR RWY 31