

VOR RWY 4

LYNCHBURG RGNL/PRESTON GLENN FIELD (LYH)

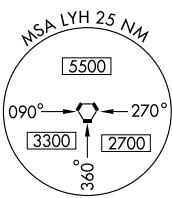
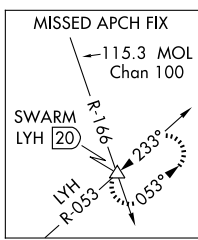
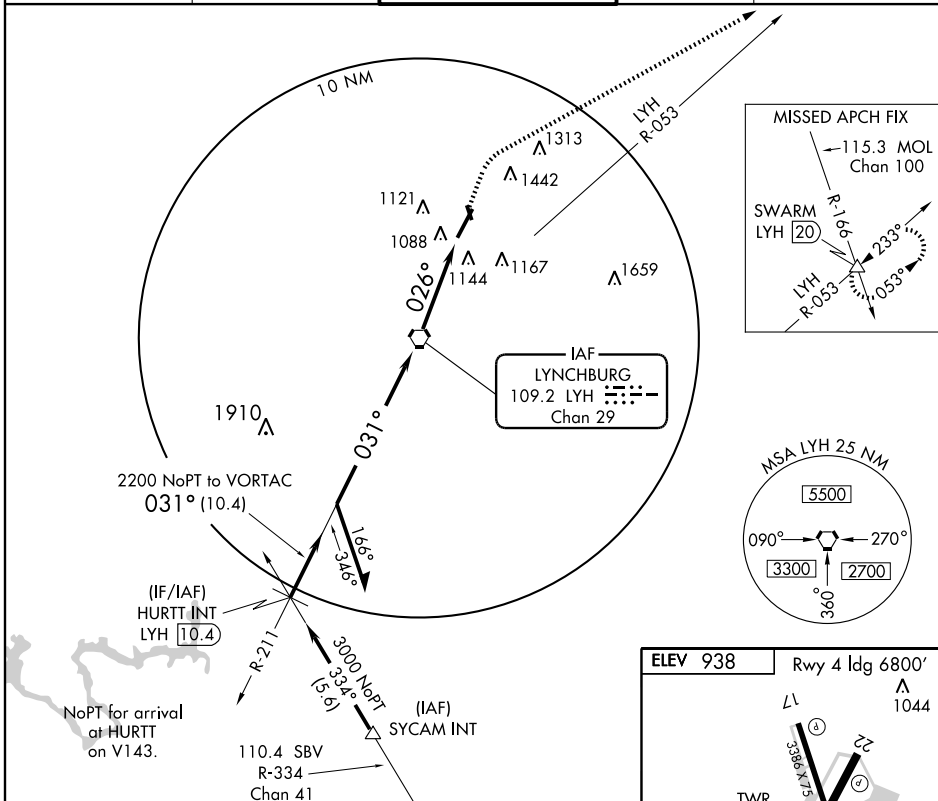
VORTAC LYH	APP CRS	Rwy Idg	6800
109.2	026°	TDZE	906
Chan 29		Apt Elev	938

▼ For inoperative MALSR, increase S-4 Cat A and B visibility to RVR 5000. Visibility reduction by helicopters NA.



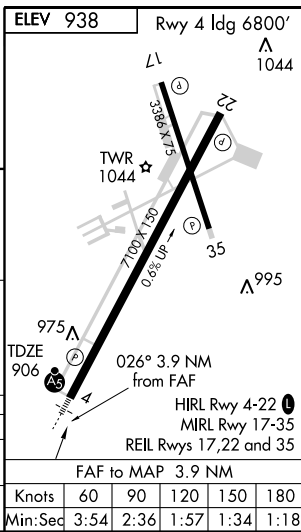
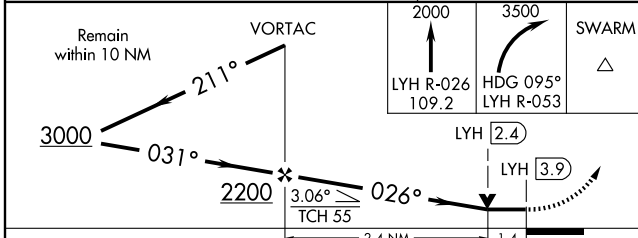
MISSED APPROACH: Climb to 2000 via LYH VORTAC R-026 then climbing right turn to 3500 via heading 095° and LYH VORTAC R-053 to SWARM Int and hold.

ATIS 119.8	ROANOKE APP CON 135.0 254.32	LYNCHBURG TOWER ★ 127.65 (CTAF) 0 257.8	GND CON 121.9	UNICOM 122.95
----------------------	--	---	-------------------------	-------------------------



NE-3, 11 MAR 2010 to 08 APR 2010

NE-3, 11 MAR 2010 to 08 APR 2010



CATEGORY	A	B	C	D
S-4	1400/40	494 (500-¾)		1400/50 494 (500-1)
CIRCLING	1640-1 702 (800-1)	1700-1¼ 762 (800-1¼)	1800-2½ 862 (900-2½)	1800-2¾ 862 (900-2¾)

VOR RWY 4