

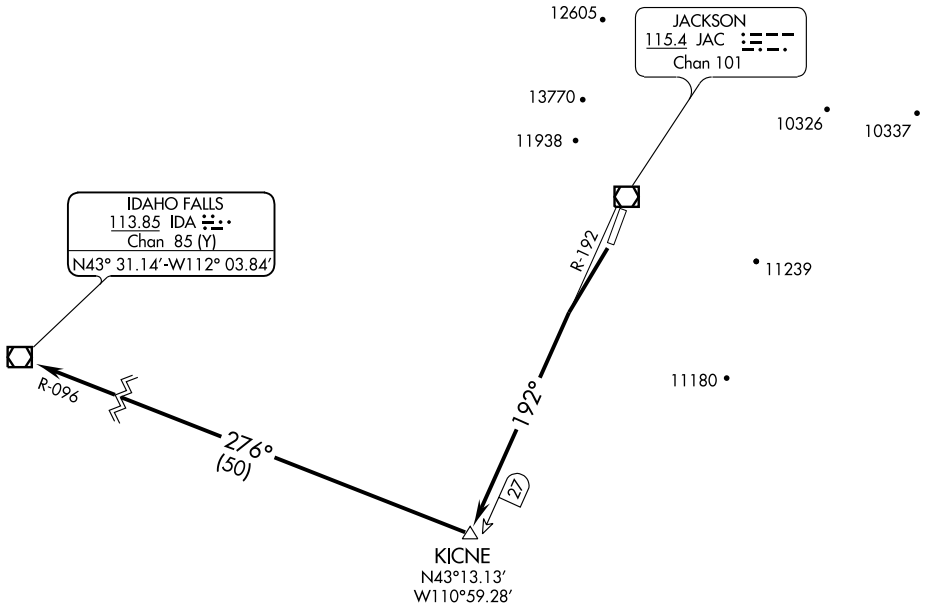
(TETON3.KICNE) 08157

SL-504 (FAA)

JACKSON HOLE (JAC)  
JACKSON, WYOMING

# TETON THREE DEPARTURE (OBSTACLE)

SALT LAKE CENTER  
133.25 285.6  
CASPER RADIO  
122.05  
CTAF  
118.075  
UNICOM  
122.95  
AWOS-3 120.625



NW-1, 11 MAR 2010 to 08 APR 2010

NW-1, 11 MAR 2010 to 08 APR 2010

### TAKE-OFF MINIMUMS:

Rwy 19: Standard with minimum climb of 335' per NM to 14000 or 4400-3 for climb in visual conditions.

Rwy 1: Not authorized - ATC.

NOTE: Rwy 19, Bush 485 feet from departure end of runway, 513 feet right of centerline, 6428' MSL.

### DEPARTURE ROUTE DESCRIPTION

TAKE-OFF RUNWAY 19: Climb to 14000 via JAC R-192 to KICNE INT/JAC 27 DME, then right turn via IDA R-096 to IDA VOR/DME; or for climb in visual conditions: cross JAC VOR/DME southbound at or above 10800, then climb to 14000 via JAC R-192 to KICNE INT/JAC 27 DME, then right turn via IDA R-096 to IDA VOR/DME.

# TETON THREE DEPARTURE (OBSTACLE)

(TETON3.KICNE) 08157

JACKSON, WYOMING  
JACKSON HOLE (JAC)