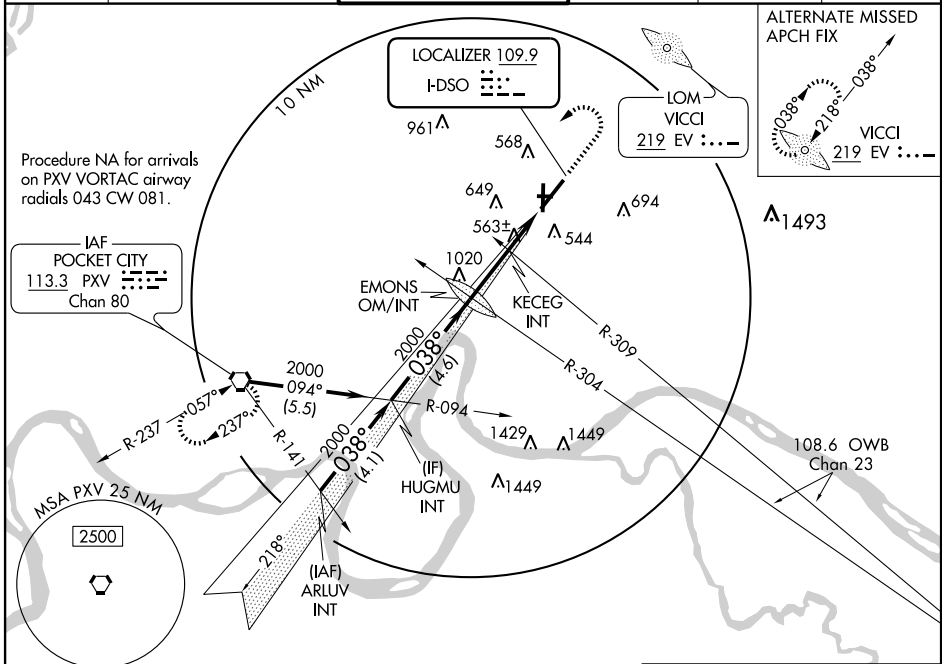


# ILS or LOC RWY 4

EVANSVILLE RGNL (EVV)

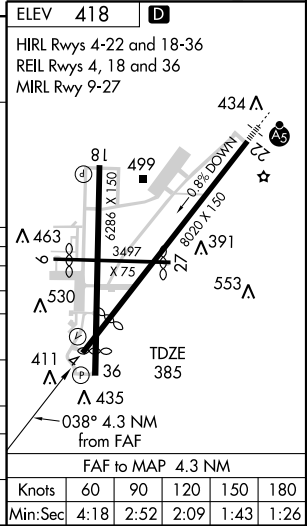
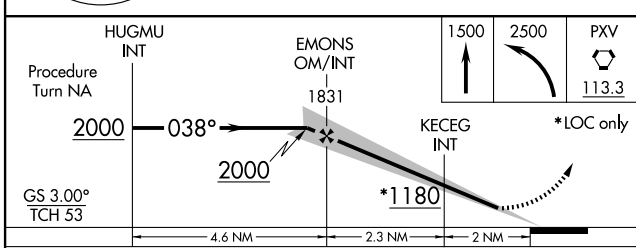
LOC I-DSO <b>109.9</b>	APP CRS <b>038°</b>	Rwy Idg TDZE Apt Elev	<b>6724</b> <b>385</b> <b>418</b>
---------------------------	------------------------	-----------------------------	-----------------------------------------

		MISSED APPROACH: Climb to 1500 then climbing left turn to 2500 direct PXV VORTAC and hold.			
ATIS <b>120.2</b>	EVANSVILLE APP CON ★ <b>126.4 226.4</b>	EVANSVILLE TOWER ★ <b>118.7 (CTAF) 257.8</b>	GND CON <b>121.9</b>	CLNC DEL <b>126.6</b>	UNICOM <b>122.95</b>



EC-2, 11 MAR 2010 to 08 APR 2010

EC-2, 11 MAR 2010 to 08 APR 2010



CATEGORY	A	B	C	D
S-ILS 4		585-3/4	200 (200-3/4)	
S-LOC 4	1180-1 795 (800-1)	1180-1 1/4 795 (800-1 1/4)	1180-2 1/4 795 (800-2 1/4)	1180-2 1/2 795 (800-2 1/2)
CIRCLING	1180-1 762 (800-1)	1180-1 1/4 762 (800-1 1/4)	1180-2 1/4 762 (900-2 1/4)	1180-2 1/2 762 (800-2 1/2)
KECEG FIX MINIMUMS				
S-LOC 4	820-1	435 (500-1)	820-1 1/4 435 (500-1 1/4)	820-1 1/2 435 (500-1 1/2)
CIRCLING	940-1 522 (600-1)	960-1 542 (600-1)	960-1 1/2 542 (600-1 1/2)	980-2 562 (600-1)

Knots	60	90	120	150	180
Min:Sec	4:18	2:52	2:09	1:43	1:26