


# RNAV (GPS) RWY 22

EVANSVILLE RGNL (EVV)

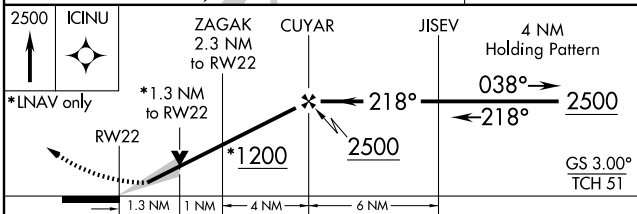
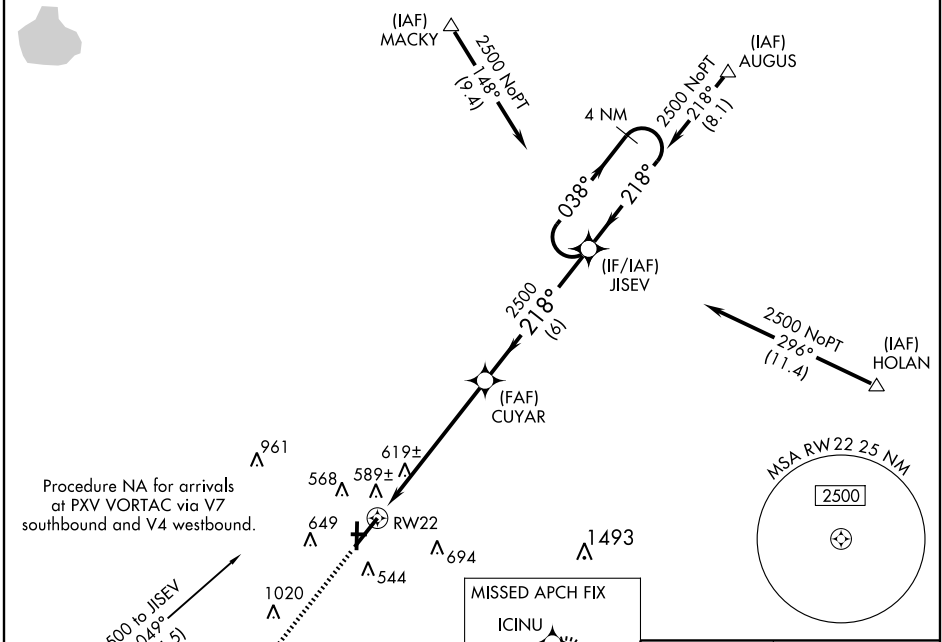
WAAS CH <b>42512</b> <b>W22A</b>	APP CRS <b>218°</b>	Rwy Idg <b>8020</b>
		TDZE <b>418</b>
		Apt Elev <b>418</b>

**ASR** For uncompensated Baro-VNAV systems, LNAV/VNAV NA below -15°C (5°F) or above 48°C (118°F). DME/DME RNP-0.3 NA.

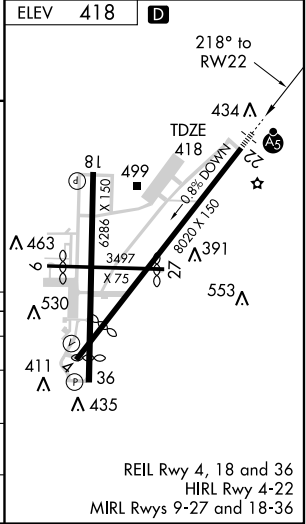
**MALSRR** 

**MISSED APPROACH:** Climb to 2500 direct ICINU and hold.

ATIS <b>120.2</b>	EVANSVILLE APP CON * <b>126.4 226.4</b>	EVANSVILLE TOWER * <b>118.7(CTAF) 257.8</b>	GND CON <b>121.9</b>	CLNC DEL <b>126.6</b>	UNICOM <b>122.95</b>
----------------------	--	--	-------------------------	--------------------------	-------------------------



CATEGORY	A	B	C	D
LPV DA		618/24	200 (200-½)	
LNAV/VNAV DA		910/60	492 (500-1¼)	
LNAV MDA	880/24	462 (500-½)	880/40 462 (500-¾)	880/50 462 (500-1)
CIRCLING	940-1 522 (600-1)	960-1 542 (600-1)	960-1½ 542 (600-½)	980-2 562 (600-2)



EC-2, 19 NOV 2009 to 17 DEC 2009

EC-2, 19 NOV 2009 to 17 DEC 2009