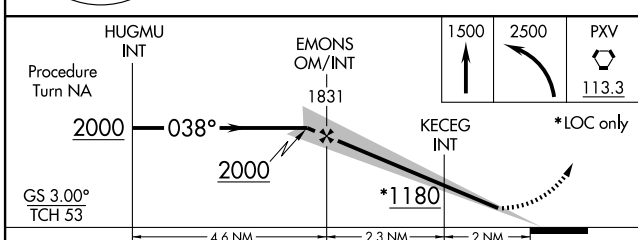
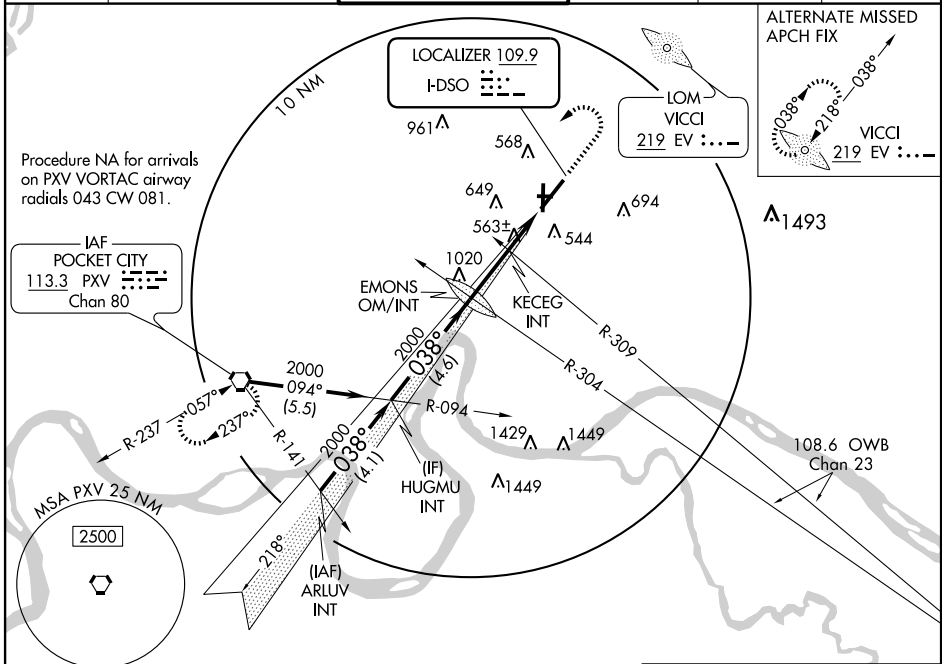


# ILS or LOC RWY 4

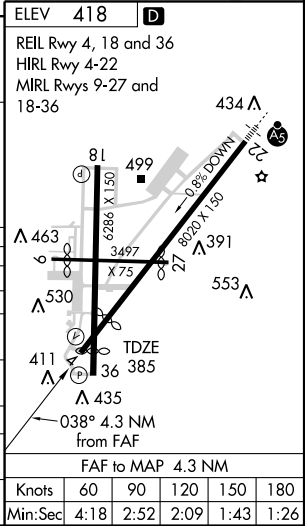
EVANSVILLE RGNL (EVV)

LOC I-DSO <b>109.9</b>	APP CRS <b>038°</b>	Rwy Idg TDZE Apt Elev <b>6724</b> <b>385</b> <b>418</b>
---------------------------	------------------------	--

<p><b>ASR</b></p>		<p>MISSED APPROACH: Climb to 1500 then climbing left turn to 2500 direct PXV VORTAC and hold.</p>			
ATIS <b>120.2</b>	EVANSVILLE APP CON ★ <b>126.4 226.4</b>	EVANSVILLE TOWER ★ <b>118.7(CTAF) 257.8</b>	GND CON <b>121.9</b>	CLNC DEL <b>126.6</b>	UNICOM <b>122.95</b>



CATEGORY	A	B	C	D
S-ILS 4		585-3/4	200 (200-3/4)	
S-LOC 4	1180-1 795 (800-1)	1180-1 1/4 795 (800-1 1/4)	1180-2 1/4 795 (800-2 1/4)	1180-2 1/2 795 (800-2 1/2)
CIRCLING	1180-1 762 (800-1)	1180-1 1/4 762 (800-1 1/4)	1180-2 1/4 762 (900-2 1/4)	1180-2 1/2 762 (800-2 1/2)
KECEG FIX MINIMUMS				
S-LOC 4	820-1	435 (500-1)	820-1 1/4 435 (500-1 1/4)	820-1 1/2 435 (500-1 1/2)
CIRCLING	940-1 522 (600-1)	960-1 542 (600-1)	960-1 1/2 542 (600-1 1/2)	980-2 562 (600-1)



EC-2, 19 NOV 2009 to 17 DEC 2009

EC-2, 19 NOV 2009 to 17 DEC 2009